

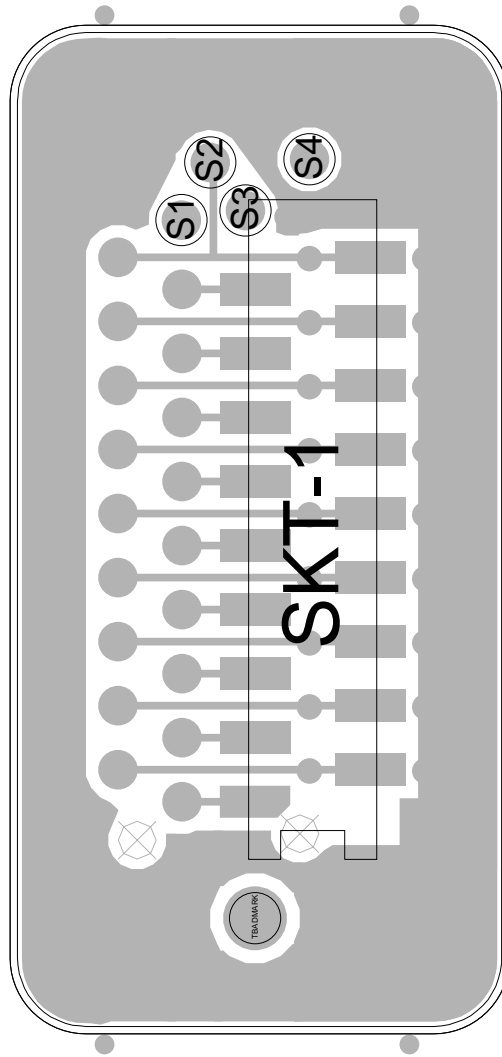
7.16 T2000 EMC Filter PCB

T2000 EMC Filter Parts List (IPN 220-01383-01)

Ref	Var	IPN	Description	Ref	Var	IPN	Description
C1		015-23470-08	CAP CER 0805 CHIP 470P 10% X7R 50V				
C2		015-23470-08	CAP CER 0805 CHIP 470P 10% X7R 50V				
C3		015-23470-08	CAP CER 0805 CHIP 470P 10% X7R 50V				
C4	01	015-23150-01	CAP CER 0805 CHIP 150P 5% NPO 50V				
C4	02	015-23150-01	CAP CER 0805 CHIP 150P 5% NPO 50V				
C4	08	015-23470-08	CAP CER 0805 CHIP 470P 10% X7R 50V				
C5		015-23470-08	CAP CER 0805 CHIP 470P 10% X7R 50V				
C6		015-23470-08	CAP CER 0805 CHIP 470P 10% X7R 50V				
C7		015-23470-08	CAP CER 0805 CHIP 470P 10% X7R 50V				
C8		015-23470-08	CAP CER 0805 CHIP 470P 10% X7R 50V				
C9		015-23470-08	CAP CER 0805 CHIP 470P 10% X7R 50V				
C10		015-23470-08	CAP CER 0805 CHIP 470P 10% X7R 50V				
C11		015-23470-08	CAP CER 0805 CHIP 470P 10% X7R 50V				
C12		015-23470-08	CAP CER 0805 CHIP 470P 10% X7R 50V				
C13		015-23470-08	CAP CER 0805 CHIP 470P 10% X7R 50V				
C14		015-23470-08	CAP CER 0805 CHIP 470P 10% X7R 50V				
C15		015-23470-08	CAP CER 0805 CHIP 470P 10% X7R 50V				
C16		015-23470-08	CAP CER 0805 CHIP 470P 10% X7R 50V				
C17		015-23470-08	CAP CER 0805 CHIP 470P 10% X7R 50V				
C18		015-23470-08	CAP CER 0805 CHIP 470P 10% X7R 50V				
PDL-1	01	240-00026-31	CONN PADLE BRD 18WAY MICROMATCH				
PDL-1	02	240-00026-31	CONN PADLE BRD 18WAY MICROMATCH				
PDL-1	03	240-00026-31	CONN PADLE BRD 18WAY MICROMATCH				
PDL-1	08	240-00026-23	CONN PADLE BD 8 WAY MICRO MATCH 0-215570-				
SKT-1	01	240-10000-11	(L) CONN SMD SKT 18WAY MICROMATCH				
SKT-1	02	240-10000-11	(L) CONN SMD SKT 18WAY MICROMATCH				
SKT-1	03	240-10000-11	(L) CONN SMD SKT 18WAY MICROMATCH				
SKT-1	08	240-10000-05	CONN SMD SKT 8WAY 2ROW MICROMATCH				
	02	205-00010-12	CABLE FLAT RBBN 16 CORE 16/7/0.1 GREY				
	08	205-00010-12	CABLE FLAT RBBN 16 CORE 16/7/0.1 GREY				
		220-01383-01	PCB T2000 SII EMC FILTER BRD				
	02	240-00020-56	PLUG 8WAY 2ROW(2X4) CORD MTG IDC MICROM				
	08	240-00020-56	PLUG 8WAY 2ROW(2X4) CORD MTG IDC MICROM				
		349-00020-32	SCREW TAPTITE M3X8MM PAN POZI BZ				

Variants: 01 = T2020, T2035, T2040 & T2050 EMC radios
 02 = Non-EMC remote mounted radios
 03 = T2010, T2015 & T2030 radios
 08 = Used in T2000-A03/-A04/-A16 remote kits (refer to Section 8.16)

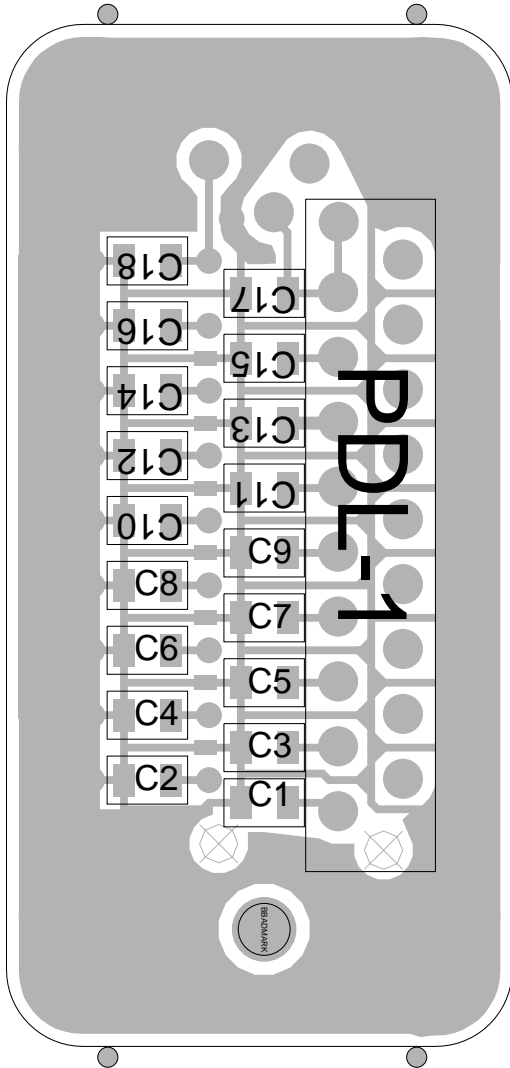
EMC FILTER PCB



220-01383-01 TOP COPPER/DEVICES

T2000 EMC Filter PCB (IPN 220-01383-01) - Top Side

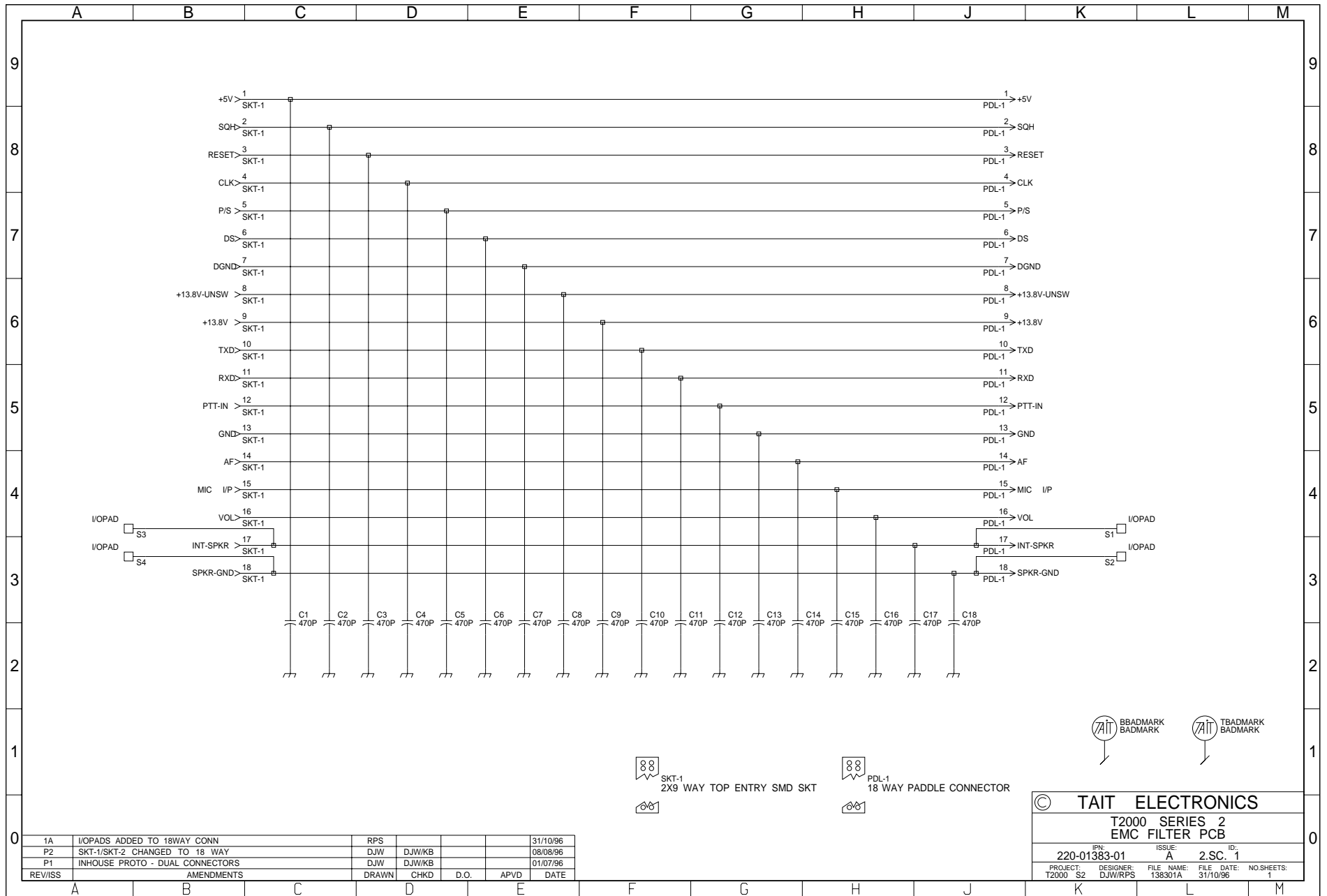
EMC FILTER PCB


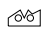


220-01383-01

BOTTOM COPPER/DEVICES

T2000 EMC Filter PCB (IPN 220-01383-01) - Bottom Side



 SKT-1
 2X9 WAY TOP ENTRY SMD SKT


 PDL-1
 18 WAY PADDLE CONNECTOR




TAIT ELECTRONICS			
T2000 SERIES 2 EMC FILTER PCB			
IPN: 220-01383-01	ISSUE: A	ID: 2.SC. 1	
PROJECT: T2000 S2	DESIGNER: DJW/RPS	FILE NAME: 138301A	FILE DATE: 31/10/96
NO SHEETS: 1			

1A	I/OPADS ADDED TO 18WAY CONN	RPS			31/10/96
P2	SKT-1/SKT-2 CHANGED TO 18 WAY	DJW	DJW/KB		08/08/96
P1	INHOUSE PROTO - DUAL CONNECTORS	DJW	DJW/KB		01/07/96
REV/ISS	AMENDMENTS	DRAWN	CHKD	D.O.	APVD DATE

