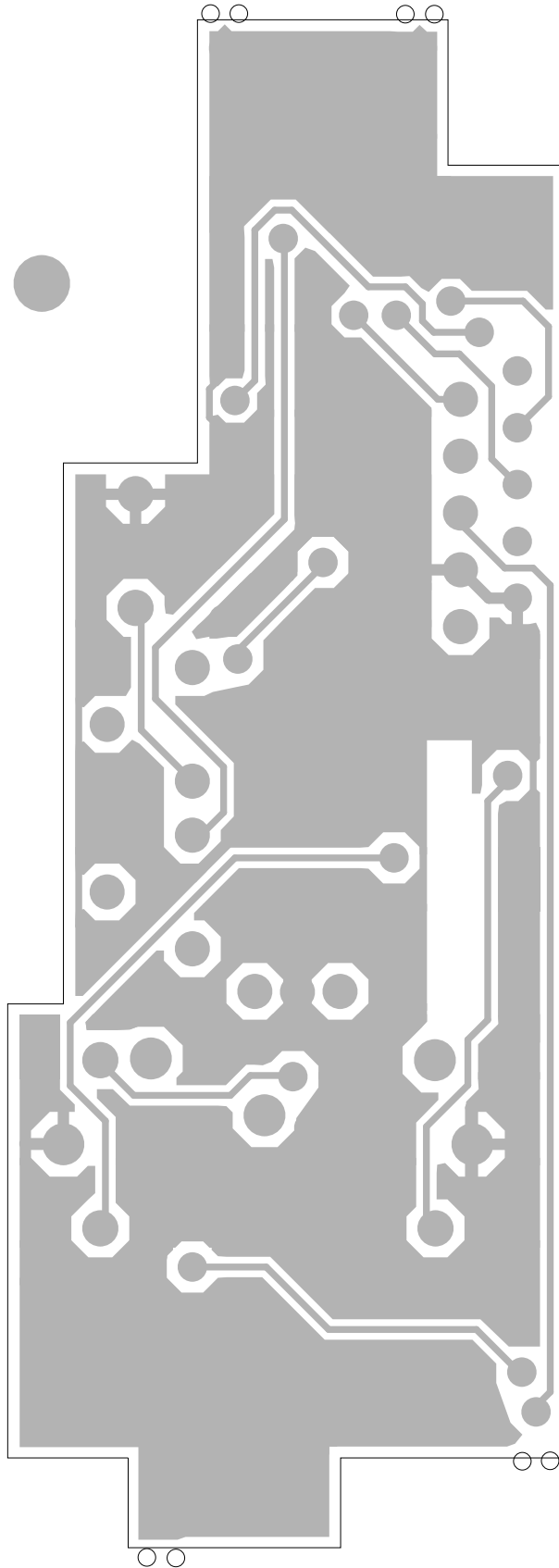


7.9 T2000 TCXO/Tx Audio PCB

T2000 TCXO/Tx Audio Parts List (IPN 220-01389-00)

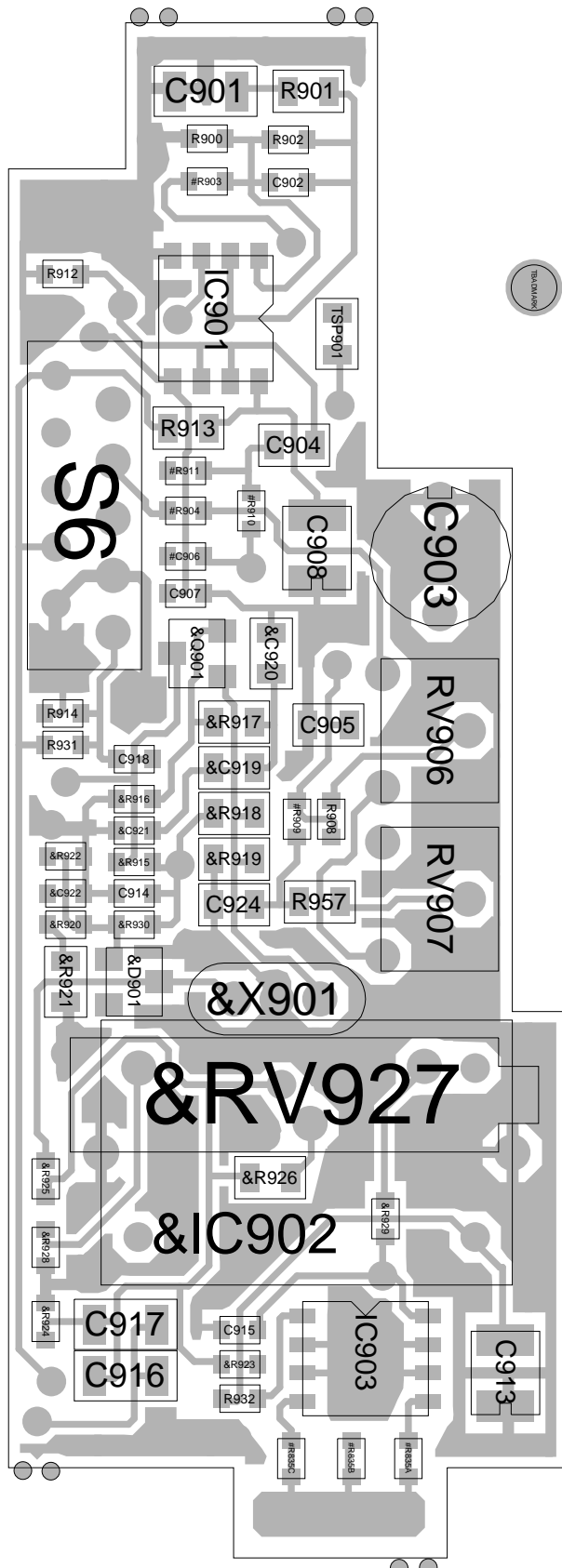
Ref	Var	IPN	Description	Ref	Var	IPN	Description
C901		015-06100-08	CAP CER 1206 CHIP 100N 10% X7R 50V	&R928	XX5	038-10000-00	RES 0603 CHIP ZERO OHM 1/16W +-5%
C902		018-11470-00	CAP 0603 CHIP 4P7 50V NPO +-0.25P	&R929	XX1	038-15470-00	RES 0603 CHIP 47K 1/16W +-5%
C903		020-09100-07	CAP ELECT 100M 10V 6.3X7MM 5MM	&R930	XX1	038-14470-00	RES 0603 CHIP 4K7 1/16W +-5%
C904		015-25470-08	CAP CER 0805 CHIP 47N 10% X7R 50V	R931		038-14220-00	RES 0603 CHIP 2K2 1/16W +-5%
C905		015-24470-08	CAP CER 0805 CHIP 4N7 10% X7R 50V	R932		038-12470-00	RES 0603 CHIP 47E 1/16W +-5%
#C906	X1X	018-11150-00	CAP 0603 CHIP 1P5 50V NPO +-0.25P	R957		036-14390-00	RES M/F 0805 CHIP 3K9 5%
#C906	X2X	018-11470-00	CAP 0603 CHIP 4P7 50V NPO +-0.25P				
#C906	X3X	018-11150-00	CAP 0603 CHIP 1P5 50V NPO +-0.25P	S6		240-02010-76	SKT 10WAY MICROMATCH SIDE ENTRY PCB 1-21
C907		018-12470-00	CAP 0603 CHIP 47P 50V NPO +-5%	TSP901		005-10000-10	TEST POINT SMD 0805 2.0 X 1.25 X 1.45
C908		014-07470-00	CAP TANT CHIP 4U7 'B' CASE 16V +-10% 26	&X901	XX1	274-01058-00	XTAL 12.8MHZ TE/45 +-5PPM UM-1 3 LE
C913		014-07470-00	CAP TANT CHIP 4U7 'B' CASE 16V +-10% 26			220-01389-00	PCB T2000 SII TCXO
C914		018-15100-00	CAP 0603 CHIP 10N 50V X7R +-10%				
C915		018-15100-00	CAP 0603 CHIP 10N 50V X7R +-10%				
C916		015-06100-08	CAP CER 1206 CHIP 100N 10% X7R 50V				
C917		015-06100-08	CAP CER 1206 CHIP 100N 10% X7R 50V				
C918		018-15100-00	CAP 0603 CHIP 10N 50V X7R +-10%				
&C919	XX1	015-23120-01	CAP CER 0805 CHIP 120P 5% NPO 50V	Variants:	X1X		wide band (15kHz IF bandwidth)
&C920	XX1	015-23120-01	CAP CER 0805 CHIP 120P 5% NPO 50V		X2X		narrow/dual band (7.5kHz IF bandwidth)
&C921	XX1	018-12180-00	CAP 0603 CHIP 18P 50V NPO +-5%		X3X		medium band (12kHz IF bandwidth)
&C922	XX1	018-15100-00	CAP 0603 CHIP 10N 50V X7R +-10%		XX1		±5ppm, -10 to +60°C frequency stability
C924		015-24470-08	CAP CER 0805 CHIP 4N7 10% X7R 50V		XX3		±3ppm, -30 to +60°C frequency stability
					XX5		±2.5ppm, -30 to +60°C frequency stability
&D901	XX1	001-10004-00	(S) DIODE SMD VARICAP BBY40 SOT23				
IC901		002-10340-02	(S) IC SMD MC34002D LIN. OP-AM				
&IC902	XX3	539-00010-46	VCTCXO 12.8MHZ +-3.0PPM -30 TO +75				
&IC902	XX5	539-00010-48	VCTCXO 12.8MHZ +-2.5PPM -30 TO +75				
IC903		002-10078-05	(S) IC SMD 78L05 5V REG				
&Q901	XX1	000-10008-92	(S) XSTR SMD BFS17 NPN SO				
#R835A	X1X	038-10000-00	RES 0603 CHIP ZERO OHM 1/16W +-5%				
#R835A	X3X	038-10000-00	RES 0603 CHIP ZERO OHM 1/16W +-5%				
#R835C	X2X	038-10000-00	RES 0603 CHIP ZERO OHM 1/16W +-5%				
R900		038-15100-00	RES 0603 CHIP 10K 1/16W +-5%				
R901		036-15220-00	RES M/F 0805 CHIP 22K 5%				
R902		038-17100-00	RES 0603 CHIP 1M 1/16W +-5%				
#R903	X1X	038-12100-00	RES 0603 CHIP 10E 1/16W +-5%				
#R903	X2X	038-12100-00	RES 0603 CHIP 10E 1/16W +-5%				
#R903	X3X	038-12100-00	RES 0603 CHIP 10E 1/16W +-5%				
#R904	X1X	038-12100-00	RES 0603 CHIP 10E 1/16W +-5%				
#R904	X2X	038-12100-00	RES 0603 CHIP 10E 1/16W +-5%				
#R904	X3X	038-12100-00	RES 0603 CHIP 10E 1/16W +-5%				
RV906		042-04200-02	RES PRESET 2K CARBON VERT SIDE ADJ				
RV907		042-04200-02	RES PRESET 2K CARBON VERT SIDE ADJ				
R908		038-15470-00	RES 0603 CHIP 47K 1/16W +-5%				
#R909	X1X	038-15470-00	RES 0603 CHIP 47K 1/16W +-5%				
#R909	X2X	038-15560-00	RES 0603 CHIP 56K 1/16W +-5%				
#R909	X3X	038-15470-00	RES 0603 CHIP 47K 1/16W +-5%				
#R910	X1X	038-15150-00	RES 0603 CHIP 15K 1/16W +-5%				
#R910	X2X	038-15180-00	RES 0603 CHIP 18K 1/16W +-5%				
#R910	X3X	038-15150-00	RES 0603 CHIP 15K 1/16W +-5%				
#R911	X1X	038-15470-00	RES 0603 CHIP 47K 1/16W +-5%				
#R911	X2X	038-15560-00	RES 0603 CHIP 56K 1/16W +-5%				
#R911	X3X	038-15470-00	RES 0603 CHIP 47K 1/16W +-5%				
R912		038-15100-00	RES 0603 CHIP 10K 1/16W +-5%				
R913		036-12330-00	RES M/F 0805 CHIP 33E 5%				
R914		038-14470-00	RES 0603 CHIP 4K7 1/16W +-5%				
&R915	XX1	038-14100-00	RES 0603 CHIP 1K0 1/16W +-5%				
&R916	XX1	038-14150-00	RES 0603 CHIP 1K5 1/16W +-5%				
&R917	XX1	036-12820-00	RES M/F 0805 CHIP 82E 5%				
&R918	XX1	036-15330-00	RES M/F 0805 CHIP 33K 5%				
&R919	XX1	036-15220-00	RES M/F 0805 CHIP 22K 5%				
&R920	XX1	038-14820-00	RES 0603 CHIP 8K2 1/16W +-5%				
&R921	XX1	045-15100-00	RES NTC SMD 10K 5%				
&R922	XX1	038-14220-00	RES 0603 CHIP 2K2 1/16W +-5%				
&R923	XX3	038-17100-00	RES 0603 CHIP 1M 1/16W +-5%				
&R923	XX5	038-17100-00	RES 0603 CHIP 1M 1/16W +-5%				
&R924	XX3	038-17100-00	RES 0603 CHIP 1M 1/16W +-5%				
&R924	XX5	038-17100-00	RES 0603 CHIP 1M 1/16W +-5%				
&R925	XX1	038-16100-00	RES 0603 CHIP 100K 1/16W +-5%				
&R926	XX1	036-16330-00	RES M/F 0805 CHIP 330K 5%				
&RV927	XX1	044-06100-04	RES PRESET 100K CERMET 20T SIDE ADJ				
&R928	XX1	038-15820-00	RES 0603 CHIP 82K 1/16W +-5%				
&R928	XX3	038-10000-00	RES 0603 CHIP ZERO OHM 1/16W +-5%				



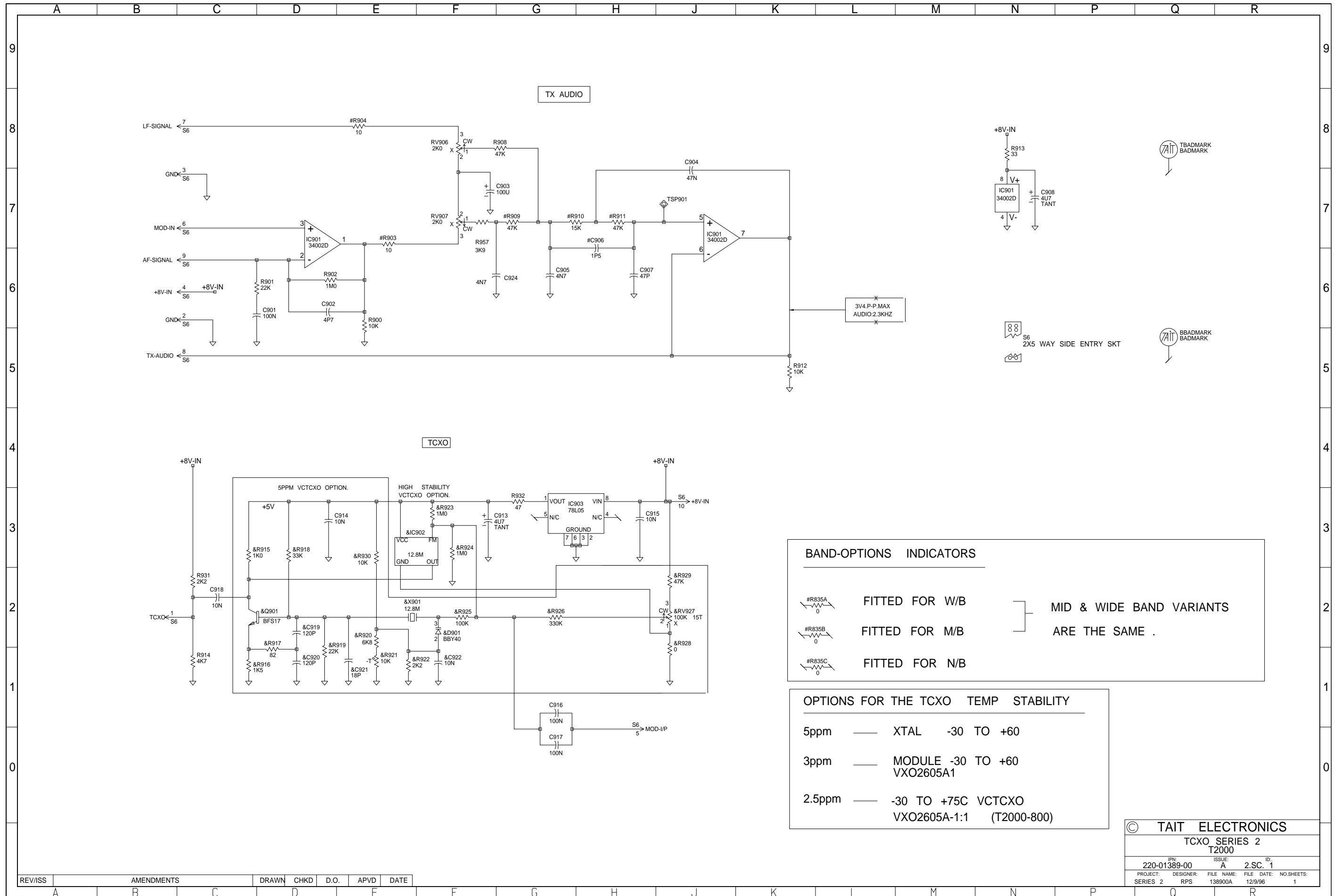
220-01389-00 ISSUE A

T2000 TCXO/Tx Audio PCB (IPN 220-01389-00) - Bottom Side

220-01389-00 ISSUE A



T2000 TCXO/Tx Audio PCB (IPN 220-01389-00) - Top Side



BAND-OPTIONS INDICATORS

#R835A FITTED FOR W/B } MID & WIDE BAND VARIANTS
 #R835B FITTED FOR M/B } ARE THE SAME .
 #R835C FITTED FOR N/B

OPTIONS FOR THE TCXO TEMP STABILITY

5ppm — XTAL -30 TO +60
 3ppm — MODULE -30 TO +60
 VXO2605A1
 2.5ppm — -30 TO +75C VCTCXO
 VXO2605A-1:1 (T2000-800)

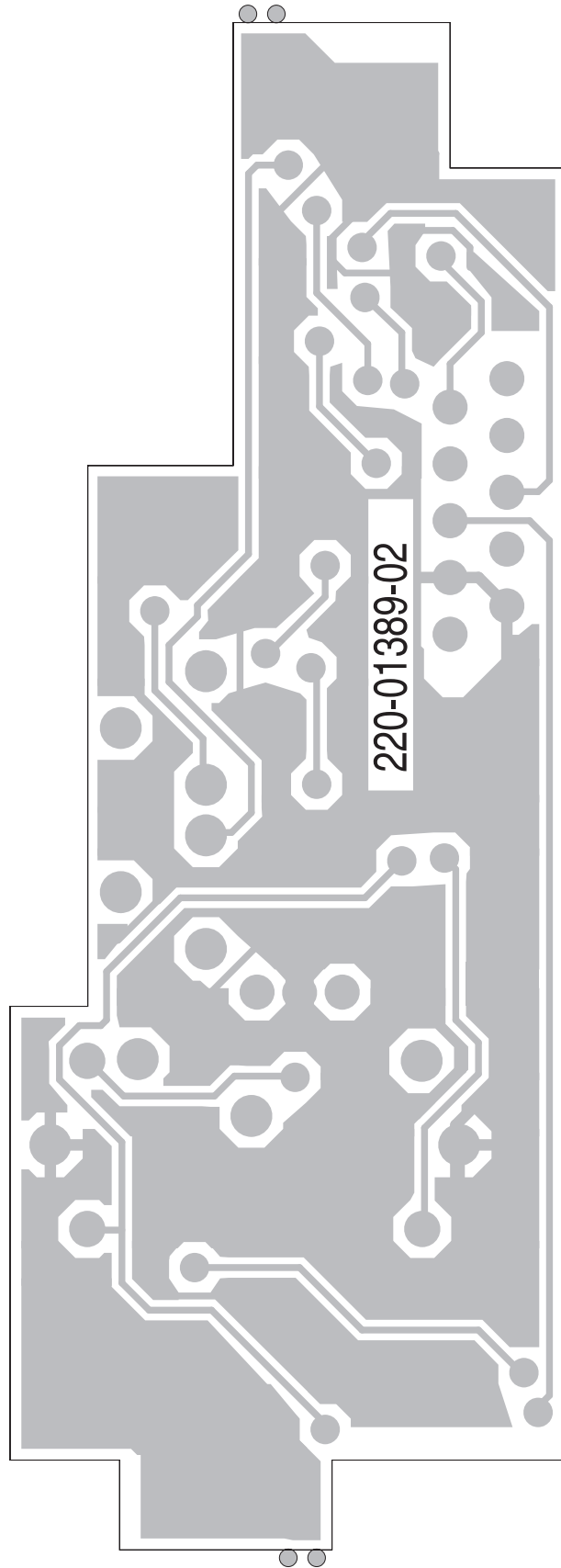
© TAIT ELECTRONICS			
TCXO SERIES 2			
T2000			
IPN:	ISSUE:	FILE NAME:	ID:
220-01389-00	A	138900A	2.SC. 1
PROJECT:	DESIGNER:	FILE DATE:	NO.SHEETS:
SERIES 2	RPS	12/9/96	1

REV/ISS	AMENDMENTS	DRAWN	CHKD	D.O.	APVD	DATE

7.9 T2000 TCXO/Tx Audio PCB

T2000 TCXO/Tx Audio Parts List IPN 220-01389-02)

Ref	Var	IPN	Description	Ref	Var	IPN	Description
C901		015-06100-08	CAP CER 1206 CHIP 100N 10% X7R 50V	&R928	XX1	038-15820-00	RES 0603 CHIP 82K 1/16W +-5%
C902		018-11470-10	CAP 0603 CHIP 4P7 50V NPO +-0.1P	&R928	XX3	038-10000-00	RES 0603 CHIP ZERO OHM 1/16W +-5%
C903		016-09100-01	(L) CAP ELECT SMD 100U 6.3V 6.6*6.6MM	&R928	XX5	038-10000-00	RES 0603 CHIP ZERO OHM 1/16W +-5%
C904		015-25470-08	CAP CER 0805 CHIP 47N 10% X7R 50V	&R929	XX1	038-15470-00	RES 0603 CHIP 47K 1/16W +-5%
C905		015-24470-08	CAP CER 0805 CHIP 4N7 10% X7R 50V	&R930	XX1	038-14470-00	RES 0603 CHIP 4K7 1/16W +-5%
#C906	X1X	018-11150-10	CAP 0603 CHIP 1P5 50V NPO +-0.1P	R931		038-14220-00	RES 0603 CHIP 2K2 1/16W +-5%
#C906	X2X	018-11470-10	CAP 0603 CHIP 4P7 50V NPO +-0.1P	R932		038-12470-00	RES 0603 CHIP 47E 1/16W +-5%
#C906	X3X	018-11150-10	CAP 0603 CHIP 1P5 50V NPO +-0.1P	R957		036-14390-00	RES M/F 0805 CHIP 3K9 5%
C907		018-12470-10	CAP 0603 CHIP 47P 50V NPO +-1%				
C908		014-07470-01	CAP TANT CHIP 4U7 'B' CASE 25V +-10% 26	S6		240-02010-76	SKT 10WAY MICROMATCH SIDE ENTRY PCB 1-25
C913		014-07470-01	CAP TANT CHIP 4U7 'B' CASE 25V +-10% 26				
C914		018-15100-00	CAP 0603 CHIP 10N 50V X7R +-10%	TSP901		005-10000-10	TEST POINT SMD 0805 2.0 X 1.25 X 1.45
C915		018-15100-00	CAP 0603 CHIP 10N 50V X7R +-10%				
C916		015-06100-08	CAP CER 1206 CHIP 100N 10% X7R 50V	&X901	XX1	274-01058-00	XTAL 12.8MHZ TE/45 +-5PPM UM-1 3 LE
C917		015-06100-08	CAP CER 1206 CHIP 100N 10% X7R 50V				
C918		018-15100-00	CAP 0603 CHIP 10N 50V X7R +-10%			220-01389-02	PCB T2000 SII TCXO
&C919	XX1	015-23120-01	CAP CER 0805 CHIP 120P 5% NPO 50V				
&C920	XX1	015-23120-01	CAP CER 0805 CHIP 120P 5% NPO 50V				
&C921	XX1	018-12180-10	CAP 0603 CHIP 18P 50V NPO +-1%				
&C922	XX1	018-15100-00	CAP 0603 CHIP 10N 50V X7R +-10%				
C924		015-24470-08	CAP CER 0805 CHIP 4N7 10% X7R 50V				
&D901	XX1	001-10004-00	(S) DIODE SMD VARICAP BBY40 SOT23				
							XX1 ±5ppm, -10 to +60°C frequency stability
							XX3 ±3ppm, -30 to +60°C frequency stability
							XX5 ±2.5ppm, -30 to +60°C frequency stability
IC901		002-10340-02	(S) IC SMD MC34002D LIN OP-AMP DUAL SO				
&IC902	XX3	539-00010-46	VCTCXO 12.8MHZ +-3.0PPM -30 TO +75				
&IC902	XX5	539-00010-48	VCTCXO 12.8MHZ +-2.5PPM -30 TO +75				
IC903		002-10078-05	(S) IC SMD 78L05 5V REG				
&Q901	XX1	000-10008-92	(S) XSTR SMD BFS17 NPN SOT-23 UHF S				
#R835A	X1X	038-10000-00	RES 0603 CHIP ZERO OHM 1/16W +-5%				
#R835A	X3X	038-10000-00	RES 0603 CHIP ZERO OHM 1/16W +-5%				
#R835B	X1X	038-10000-00	RES 0603 CHIP ZERO OHM 1/16W +-5%				
#R835B	X3X	038-10000-00	RES 0603 CHIP ZERO OHM 1/16W +-5%				
#R835C	X2X	038-10000-00	RES 0603 CHIP ZERO OHM 1/16W +-5%				
R900		038-15100-00	RES 0603 CHIP 10K 1/16W +-5%				
R901		036-15220-00	RES M/F 0805 CHIP 22K 5%				
R902		038-17100-00	RES 0603 CHIP 1M 1/16W +-5%				
#R903	X1X	038-12100-00	RES 0603 CHIP 10E 1/16W +-5%				
#R903	X2X	038-12100-00	RES 0603 CHIP 10E 1/16W +-5%				
#R903	X3X	038-12100-00	RES 0603 CHIP 10E 1/16W +-5%				
#R904	X1X	038-12100-00	RES 0603 CHIP 10E 1/16W +-5%				
#R904	X2X	038-12100-00	RES 0603 CHIP 10E 1/16W +-5%				
#R904	X3X	038-12100-00	RES 0603 CHIP 10E 1/16W +-5%				
RV906		042-04200-02	RES PRESET 2K CARBON VERT SIDE ADJ				
RV907		042-04200-02	RES PRESET 2K CARBON VERT SIDE ADJ				
R908		038-15470-00	RES 0603 CHIP 47K 1/16W +-5%				
#R909	X1X	038-15470-00	RES 0603 CHIP 47K 1/16W +-5%				
#R909	X2X	038-15560-00	RES 0603 CHIP 56K 1/16W +-5%				
#R909	X3X	038-15470-00	RES 0603 CHIP 47K 1/16W +-5%				
#R910	X1X	038-15150-00	RES 0603 CHIP 15K 1/16W +-5%				
#R910	X2X	038-15180-00	RES 0603 CHIP 18K 1/16W +-5%				
#R910	X3X	038-15150-00	RES 0603 CHIP 15K 1/16W +-5%				
#R911	X1X	038-15470-00	RES 0603 CHIP 47K 1/16W +-5%				
#R911	X2X	038-15560-00	RES 0603 CHIP 56K 1/16W +-5%				
#R911	X3X	038-15470-00	RES 0603 CHIP 47K 1/16W +-5%				
R912		038-15100-00	RES 0603 CHIP 10K 1/16W +-5%				
R913		036-12330-00	RES M/F 0805 CHIP 33E 5%				
R914		038-14470-00	RES 0603 CHIP 4K7 1/16W +-5%				
&R915	XX1	038-14100-00	RES 0603 CHIP 1K0 1/16W +-5%				
&R916	XX1	038-14150-00	RES 0603 CHIP 1K5 1/16W +-5%				
&R917	XX1	036-12820-00	RES M/F 0805 CHIP 82E 5%				
&R918	XX1	036-15330-00	RES M/F 0805 CHIP 33K 5%				
&R919	XX1	036-15220-00	RES M/F 0805 CHIP 22K 5%				
&R920	XX1	038-14820-00	RES 0603 CHIP 8K2 1/16W +-5%				
&R921	XX1	045-15100-00	RES NTC SMD 10K 5%				
&R922	XX1	038-14220-00	RES 0603 CHIP 2K2 1/16W +-5%				
&R923	XX3	038-17100-00	RES 0603 CHIP 1M 1/16W +-5%				
&R923	XX5	038-17100-00	RES 0603 CHIP 1M 1/16W +-5%				
&R924	XX3	038-17100-00	RES 0603 CHIP 1M 1/16W +-5%				
&R924	XX5	038-17100-00	RES 0603 CHIP 1M 1/16W +-5%				
&R925	XX1	038-16100-00	RES 0603 CHIP 100K 1/16W +-5%				
&R926	XX1	036-16330-00	RES M/F 0805 CHIP 330K 5%				
&RV927	XX1	044-06100-04	RES PRESET 100K CERMET 20T SIDE AD				



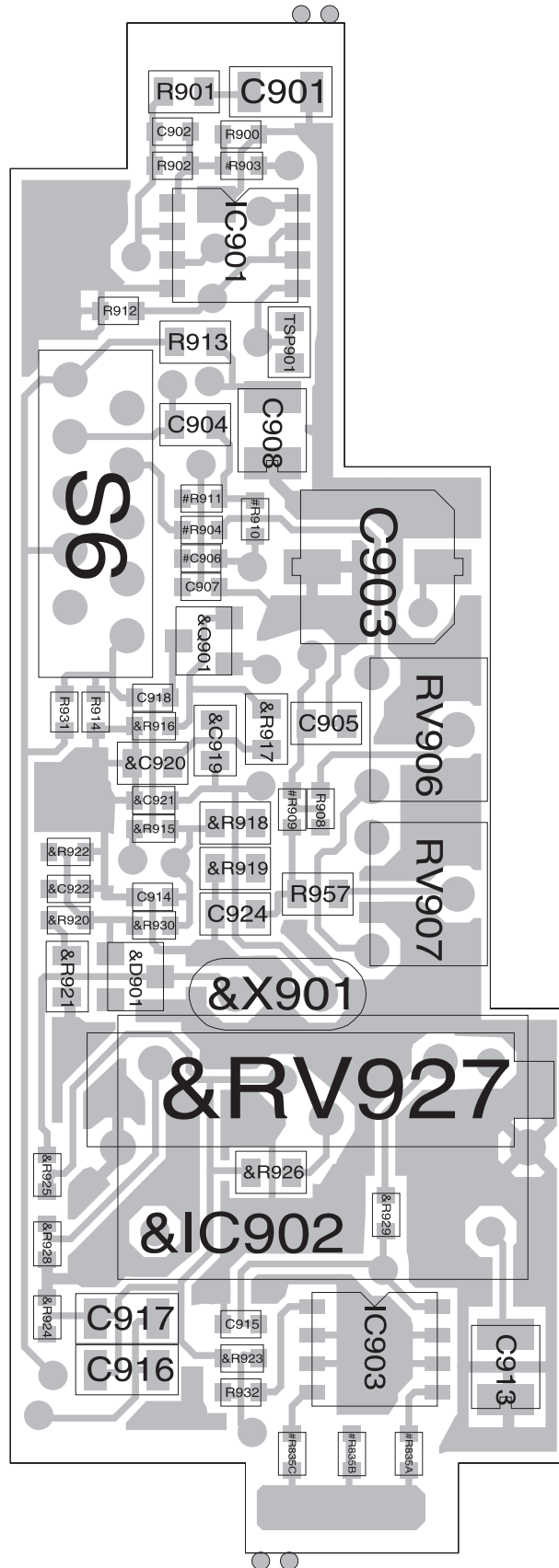
ISSUE: A

IPN: 220-01389-02

T2000 TCXO/Tx Audio PCB (IPN 220-01389-02) - Bottom Side

IPN: 220-01389-02

ISSUE: A



T2000 TCXO/Tx Audio PCB (IPN 220-01389-02) - Top Side

