

7.3 T2000-300 RF PCB

T2000-300 Parts List (IPN 220-01314-01)

Parts List Amendments	

Ref	Var	IPN	Description	Ref	Var	IPN	Description
C1		015-24100-08	CAP CER 0805 CHIP 1N 10% X7R 50V	C199		015-24100-08	CAP CER 0805 CHIP 1N 10% X7R 50V
C2		015-24100-08	CAP CER 0805 CHIP 1N 10% X7R 50V	C200		015-25100-08	CAP CER 0805 CHIP 10N 10% X7R 50V
C3		015-24100-08	CAP CER 0805 CHIP 1N 10% X7R 50V	C205		015-23680-08	CAP CER 0805 CHIP 680P 10% X7R 50V
C100		015-25100-08	CAP CER 0805 CHIP 10N 10% X7R 50V	C206		015-06100-08	CAP CER 1206 CHIP 100N 10% X7R 50V
C102		015-22470-01	CAP CER 0805 CHIP 47P 5% NPO 50V	C207		015-25100-08	CAP CER 0805 CHIP 10N 10% X7R 50V
C103		015-22220-01	CAP CER 0805 CHIP 22P 5% NPO 50V	C208		015-25100-08	CAP CER 0805 CHIP 10N 10% X7R 50V
C104		015-06100-08	CAP CER 1206 CHIP 100N 10% X7R 50V	C209		015-25100-08	CAP CER 0805 CHIP 10N 10% X7R 50V
C105		015-21180-01	CAP CER 0805 CHIP 1P8 +/-0.25 NPO 50V	C210		015-25100-08	CAP CER 0805 CHIP 10N 10% X7R 50V
C106		015-23680-08	CAP CER 0805 CHIP 680P 10% X7R 50V	C211		015-23150-01	CAP CER 0805 CHIP 150P 5% NPO 50V
C107		015-22330-01	CAP CER 0805 CHIP 33P 5% NPO 50V	C212		015-21390-01	CAP CER 0805 CHIP 3P9 +/-0.25P NPO 50V
C108		015-25100-08	CAP CER 0805 CHIP 10N 10% X7R 50V	C213		020-58470-05	CAP ELECT AI RDL 47M 16V 6.3X7MM
C109		015-21820-01	CAP CER 0805 CHIP 8P2 +/-0.25P NPO 50V	C214		015-23680-08	CAP CER 0805 CHIP 680P 10% X7R 50V
C110		015-23120-01	CAP CER 0805 CHIP 120P 5% NPO 50V	C215		020-57470-10	CAP ELECT AI RDL 4U7 50V LO ESR
C111		015-23680-08	CAP CER 0805 CHIP 680P 10% X7R 50V	C216		015-25100-08	CAP CER 0805 CHIP 10N 10% X7R 50V
C112		015-22100-01	CAP CER 0805 CHIP 10P +/-0.5P NPO 50V	C217		020-58470-05	CAP ELECT AI RDL 47M 16V 6.3X7MM
C113		015-23120-01	CAP CER 0805 CHIP 120P 5% NPO 50V	C218		020-57470-10	CAP ELECT AI RDL 4U7 50V LO ESR
C114		015-23680-08	CAP CER 0805 CHIP 680P 10% X7R 50V	C219		020-57470-10	CAP ELECT AI RDL 4U7 50V LO ESR
C115		015-21820-01	CAP CER 0805 CHIP 8P2 +/-0.25P NPO 50V	C220		022-55150-10	CAP MYLAR AI 15N 5% 63V POTTED
C116		015-23680-08	CAP CER 0805 CHIP 680P 10% X7R 50V	C221		022-57100-02	CAP MYLAR AI 1M 20% 50V POTTED
C121		015-22330-01	CAP CER 0805 CHIP 33P 5% NPO 50V	C222		022-06100-15	CAP MET POLYSTR 100N 5% 50V 5 GMM HI
C122		015-23680-08	CAP CER 0805 CHIP 680P 10% X7R 50V	C223		015-23680-08	CAP CER 0805 CHIP 680P 10% X7R 50V
C123		015-25100-08	CAP CER 0805 CHIP 10N 10% X7R 50V	C224		015-23680-08	CAP CER 0805 CHIP 680P 10% X7R 50V
C124		015-22220-01	CAP CER 0805 CHIP 22P 5% NPO 50V	C225		015-23680-08	CAP CER 0805 CHIP 680P 10% X7R 50V
C125		015-21680-01	CAP CER 0805 CHIP 6P8 +/-0.25P NPO 50V	C226		015-21220-01	CAP CER 0805 CHIP 2P2 +/-0.25P NPO 50V
C126		015-22220-01	CAP CER 0805 CHIP 22P 5% NPO 50V	C227		015-23680-08	CAP CER 0805 CHIP 680P 10% X7R 50V
C127		015-22560-01	CAP CER 0805 CHIP 56P 5% NPO 50V	C228		015-23680-08	CAP CER 0805 CHIP 680P 10% X7R 50V
C128		015-22330-01	CAP CER 0805 CHIP 33P 5% NPO 50V	C229		020-58470-05	CAP ELECT AI RDL 47M 16V 6.3X7MM
C129		015-25100-08	CAP CER 0805 CHIP 10N 10% X7R 50V	C230		015-24470-08	CAP CER 0805 CHIP 4N7 10% X7R 50V
C130		015-25100-08	CAP CER 0805 CHIP 10N 10% X7R 50V	C231		015-23680-08	CAP CER 0805 CHIP 680P 10% X7R 50V
C133		015-23270-01	CAP CER 0805 CHIP 270P 5% NPO 50V	C232		015-21680-01	CAP CER 0805 CHIP 6P8 +/-0.25P NPO 50V
C134		015-22100-01	CAP CER 0805 CHIP 10P +/-0.5P NPO 50V	C233		020-57470-10	CAP ELECT AI RDL 4U7 50V LO ESR
C135		015-23150-01	CAP CER 0805 CHIP 150P 5% NPO 50V	C234		020-57470-10	CAP ELECT AI RDL 4U7 50V LO ESR
C136		015-22270-01	CAP CER 0805 CHIP 27P 5% NPO 50V	C235		015-25100-08	CAP CER 0805 CHIP 10N 10% X7R 50V
C137		015-23680-08	CAP CER 0805 CHIP 680P 10% X7R 50V	C236		015-22390-01	CAP CER 0805 CHIP 39P 5% NPO 50V
C138		015-22270-01	CAP CER 0805 CHIP 27P 5% NPO 50V	C239		015-25100-08	CAP CER 0805 CHIP 10N 10% X7R 50V
C140		015-22100-01	CAP CER 0805 CHIP 10P +/-0.5P NPO 50V	C240		015-23680-08	CAP CER 0805 CHIP 680P 10% X7R 50V
C141		015-23270-01	CAP CER 0805 CHIP 270P 5% NPO 50V	C241		015-23680-08	CAP CER 0805 CHIP 680P 10% X7R 50V
C142		015-22330-01	CAP CER 0805 CHIP 33P 5% NPO 50V	C243		015-23680-08	CAP CER 0805 CHIP 680P 10% X7R 50V
C145		015-23100-01	CAP CER 0805 CHIP 100P 5% NPO 50V	C244		015-21680-01	CAP CER 0805 CHIP 6P8 +/-0.25P NPO 50V
C147		015-25100-08	CAP CER 0805 CHIP 10N 10% X7R 50V	C245		015-22120-01	CAP CER 0805 CHIP 12P 5% NPO 50V
C148		015-22180-01	CAP CER 0805 CHIP 18P 5% NPO 50V	C246		015-23680-08	CAP CER 0805 CHIP 680P 10% X7R 50V
C149		015-25100-08	CAP CER 0805 CHIP 10N 10% X7R 50V	C247		015-21470-01	CAP CER 0805 CHIP 4P7 +/-0.25P NPO 50V
C150		015-23100-01	CAP CER 0805 CHIP 100P 5% NPO 50V	C248		015-25100-08	CAP CER 0805 CHIP 10N 10% X7R 50V
C151		015-06100-08	CAP CER 1206 CHIP 100N 10% X7R 50V	C257		015-22180-01	CAP CER 0805 CHIP 18P 5% NPO 50V
C152		015-23100-01	CAP CER 0805 CHIP 100P 5% NPO 50V	C300		020-07470-04	CAP ELECT RADL 4M7 25V 20% 8X13MM SOLID
C152A		015-25100-08	CAP CER 0805 CHIP 10N 10% X7R 50V	C301		015-24100-08	CAP CER 0805 CHIP 1N 10% X7R 50V
C153		020-57470-10	CAP ELECT AI RDL 4U7 50V LO ESR	C302		015-21560-01	CAP CER 0805 CHIP 5P6 +/-0.25P NPO 50V
C153A		015-23100-01	CAP CER 0805 CHIP 100P 5% NPO 50V	C303		015-06100-08	CAP CER 1206 CHIP 100N 10% X7R 50V
C154		015-25100-08	CAP CER 0805 CHIP 10N 10% X7R 50V	C304		015-24100-08	CAP CER 0805 CHIP 1N 10% X7R 50V
C155		015-23100-01	CAP CER 0805 CHIP 100P 5% NPO 50V	C305		015-22220-01	CAP CER 0805 CHIP 22P 5% NPO 50V
C157		015-06100-08	CAP CER 1206 CHIP 100N 10% X7R 50V	C306		015-22220-01	CAP CER 0805 CHIP 22P 5% NPO 50V
C158		015-24100-08	CAP CER 0805 CHIP 1N 10% X7R 50V	C307		015-06100-08	CAP CER 1206 CHIP 100N 10% X7R 50V
C160		015-23270-01	CAP CER 0805 CHIP 270P 5% NPO 50V	C308		015-23680-08	CAP CER 0805 CHIP 680P 10% X7R 50V
C174		020-58470-05	CAP ELECT AI RDL 47M 16V 6.3X7MM	C309		015-22180-01	CAP CER 0805 CHIP 18P 5% NPO 50V
C175		015-06100-08	CAP CER 1206 CHIP 100N 10% X7R 50V	C310		015-23680-08	CAP CER 0805 CHIP 680P 10% X7R 50V
C176		015-06100-08	CAP CER 1206 CHIP 100N 10% X7R 50V	C311		015-06100-08	CAP CER 1206 CHIP 100N 10% X7R 50V
C179		015-25100-08	CAP CER 0805 CHIP 10N 10% X7R 50V	C312		015-21390-01	CAP CER 0805 CHIP 3P9 +/-0.25P NPO 50V
C180		015-06100-08	CAP CER 1206 CHIP 100N 10% X7R 50V	C313		015-22470-01	CAP CER 0805 CHIP 47P 5% NPO 50V
C181		015-06100-08	CAP CER 1206 CHIP 100N 10% X7R 50V	C314		015-23120-01	CAP CER 0805 CHIP 120P 5% NPO 50V
C185		015-25100-08	CAP CER 0805 CHIP 10N 10% X7R 50V	C315		015-23680-08	CAP CER 0805 CHIP 680P 10% X7R 50V
C186		015-25100-08	CAP CER 0805 CHIP 10N 10% X7R 50V	C316		015-23680-08	CAP CER 0805 CHIP 680P 10% X7R 50V
C187		015-24100-08	CAP CER 0805 CHIP 1N 10% X7R 50V	C317		015-23680-08	CAP CER 0805 CHIP 680P 10% X7R 50V
C188		015-23100-01	CAP CER 0805 CHIP 100P 5% NPO 50V	C318		015-23680-08	CAP CER 0805 CHIP 680P 10% X7R 50V
*C189		015-23470-08	CAP CER 0805 CHIP 470P 10% X7R 50V	C319		015-23680-08	CAP CER 0805 CHIP 680P 10% X7R 50V
*C190		015-23470-08	CAP CER 0805 CHIP 470P 10% X7R 50V	C320		015-22560-01	CAP CER 0805 CHIP 56P 5% NPO 50V
C191		015-24100-08	CAP CER 0805 CHIP 1N 10% X7R 50V	C321		015-06100-08	CAP CER 1206 CHIP 100N 10% X7R 50V
C192		015-22330-01	CAP CER 0805 CHIP 33P 5% NPO 50V	C322		015-02300-06	CAP CER 1210 CHIP 30P NPO 500V GRM42-2
C193		020-57470-10	CAP ELECT AI RDL 4U7 50V LO ESR	C323		015-03680-06	CAP CER 1210 CHIP 680P NPO 200V GRM42
C194		015-23680-08	CAP CER 0805 CHIP 680P 10% X7R 50V	C325		015-03270-03	CAP CER CHIP 270P 5% NPO 200V HIQ GRH 111
C195		015-23680-08	CAP CER 0805 CHIP 680P 10% X7R 50V	C326		015-24100-08	CAP CER 0805 CHIP 1N 10% X7R 50V
C196		015-06100-08	CAP CER 1206 CHIP 100N 10% X7R 50V	C327		015-06100-08	CAP CER 1206 CHIP 100N 10% X7R 50V
C197		015-06100-08	CAP CER 1206 CHIP 100N 10% X7R 50V	C328		015-25100-08	CAP CER 0805 CHIP 10N 10% X7R 50V
C198		015-23220-01	CAP CER 0805 CHIP 220P 5% NPO 50V	C329		015-02820-03	CAP CER CHIP 82P 5% NPO 500V HIQ GRH 111

Ref	Var	IPN	Description	Ref	Var	IPN	Description
C330		015-03100-03	CAP CER CHIP 100P 5% NPO 500V HIQ GRH11	L205		056-00021-52	IND FXD 820NH 10% NON MAGNETIC
C331		015-02680-06	CAP CER 1210 CHIP 68P NPO 500V GRM42-2	L206		055-01008-01	COIL TOROID 57NH 15P 11T T2300
C332		015-02150-06	CAP CER 1210 CHIP 15P NPO 500V GRM42-2	L207		056-00021-52	IND FXD 820NH 10% NON MAGNETIC
C333		015-03680-06	CAP CER 1210 CHIP 680P NPO 200V GRM42	L208		052-56130-55	COIL A/W 5.5T/3.0MM HOR 0.56MM WIRE
C334		015-02220-06	CAP CER 1210 CHIP 22P 5% NPO 500V GRM42	L210		052-56130-55	COIL A/W 5.5T/3.0MM HOR 0.56MM WIRE
C335		015-01560-06	CAP CER 1210 CHIP 5P6 NPO 500V GRM42-2	L300		030-50000-00	LINK WIRE AI ZERO OHM 0.6MM WIRE
C336		015-03680-06	CAP CER 1210 CHIP 680P NPO 200V GRM42	L301		052-08140-25	COIL A/W 2.5T/4.0MM HOR 0.8MM WIRE
C337		015-23680-08	CAP CER 0805 CHIP 680P 10% X7R 50V	L302		052-08140-45	COIL A/W 4.5T/4.0MM HOR 0.8MM WIRE
C338		015-22330-01	CAP CER 0805 CHIP 33P 5% NPO 50V	L303		056-00021-01	IND FXD 1.5UH AXIAL
C339		015-02330-06	CAP CER 1210 CHIP 33P NPO 500V GRM42-2	L304		052-08135-25	COIL A/W 2.5T/3.5MM HOR 0.8MM WIRE
C340		015-02680-06	CAP CER 1210 CHIP 68P NPO 500V GRM42-2	L305		052-08140-45	COIL A/W 4.5T/4.0MM HOR 0.8MM WIRE
C341		015-02680-06	CAP CER 1210 CHIP 68P NPO 500V GRM42-2	L306		057-10005-03	IND 0805 BLM21B05 EMI SUPRSN 5 OHM AT 10
C342		015-03220-06	CAP CER 1210 CHIP 220P NPO 500V GRM42	L307		052-08150-15	COIL A/W 1.5T/5.0MM HOR 0.8MM WIRE
C345		015-23680-08	CAP CER 0805 CHIP 680P 10% X7R 50V	L308		030-50000-00	LINK WIRE AI ZERO OHM 0.6MM WIRE
C346		015-22120-01	CAP CER 0805 CHIP 12P 5% NPO 50V	L310		052-08140-15	COIL A/W 1.5T/4.0MM HOR 0.8MM WIRE
C347		015-21820-01	CAP CER 0805 CHIP 8P2 +/-0.25P NPO 50V	L311		052-08140-45	COIL A/W 4.5T/4.0MM HOR 0.8MM WIRE
C348		015-23680-08	CAP CER 0805 CHIP 680P 10% X7R 50V	L312		056-00021-60	IND FXD 330NH 6.6X2.7MM AXIAL NON MAGNET
C349		015-23680-08	CAP CER 0805 CHIP 680P 10% X7R 50V	L313		052-08155-25	COIL A/W 2.5T/5.5MM HOR 0.8MM WIRE
C351		015-02300-06	CAP CER 1210 CHIP 30P NPO 500V GRM42-2	L314		030-50000-00	LINK WIRE AI ZERO OHM 0.6MM WIRE
C352		015-02270-06	CAP CER 1210 CHIP 27P NPO 500V GRM42-2	L315		065-00010-01	BEAD FERRITE 3B 6 HOLE
C352A		015-02270-06	CAP CER 1210 CHIP 27P NPO 500V GRM42-2	L316		052-08130-15	COIL A/W 1.5T/3.0MM HOR 0.8MM WIRE
C353		015-24100-08	CAP CER 0805 CHIP 1N 10% X7R 50V	L316A		052-08130-15	COIL A/W 1.5T/3.0MM HOR 0.8MM WIRE
C355		015-06100-08	CAP CER 1206 CHIP 100N 10% X7R 50V	L317		052-08155-15	COIL A/W 1.5T/5.5MM HOR 0.8MM WIRE
C356		015-24100-08	CAP CER 0805 CHIP 1N 10% X7R 50V	L318		052-56135-85	COIL A/W 8.5T/3.5MM HOR 0.56MM WIRE
C360		015-23680-08	CAP CER 0805 CHIP 680P 10% X7R 50V	L319		056-00021-01	IND FXD 1.5UH AXIAL
C403		015-23470-08	CAP CER 0805 CHIP 470P 10% X7R 50V	L320		052-08145-55	COIL A/W 5.5T/4.5MM HOR 0.8MM WIRE
C410		020-57470-10	CAP ELECT AI RDL 4U7 50V LO ESR	L321		056-00021-52	IND FXD 820NH 10% NON MAGNETIC
C411		015-06100-08	CAP CER 1206 CHIP 100N 10% X7R 50V	L322		052-08140-25	COIL A/W 2.5T/4.0MM HOR 0.8MM WIRE
C412		020-58470-05	CAP ELECT AI RDL 47M 16V 6.3X7MM	L323		052-08140-15	COIL A/W 1.5T/4.0MM HOR 0.8MM WIRE
C413		015-06100-08	CAP CER 1206 CHIP 100N 10% X7R 50V	L324		052-08140-15	COIL A/W 1.5T/4.0MM HOR 0.8MM WIRE
C414		020-09470-05	CAP ELECT RADL 470M 16V 10X12.5MM	L325		052-08140-25	COIL A/W 2.5T/4.0MM HOR 0.8MM WIRE
C415		020-19100-02	CAP ELECT RADL 1000M 16V 12X20MM	L326		030-50000-00	LINK WIRE AI ZERO OHM 0.6MM WIRE
C416		015-24100-08	CAP CER 0805 CHIP 1N 10% X7R 50V	L327		051-00613-01	COIL HAIR PIN 9.5NH T2K3
C419		015-06100-08	CAP CER 1206 CHIP 100N 10% X7R 50V	L331		057-10005-03	IND 0805 BLM21B05 EMI SUPRSN 5 OHM AT 10
C420		015-06100-08	CAP CER 1206 CHIP 100N 10% X7R 50V	L401		050-00016-50	COIL TAIT NO 650 455KHZ 5.6MM CAN
C423		020-08560-09	CAP ELECT RADL 56M 50V 6.3X15.5MM L/S	P1		240-00026-24	CONN PADLE BRD 16 WAY MICRO MATCH 1-2155
C424		020-57470-10	CAP ELECT AI RDL 4U7 50V LO ESR	P2		240-00026-26	CONN PADLE BRD 12 WAY MICRO MATCH 1-2155
C425		020-57470-10	CAP ELECT AI RDL 4U7 50V LO ESR	P3		240-00026-21	PLUG CAP HOUSING 7-POS CONN 172039-1
C426		015-24470-08	CAP CER 0805 CHIP 4N7 10% X7R 50V	P5		240-00010-76	PLUG HEADER 10WAY MICROMATCH PCB MTD 1-
C427		020-57470-10	CAP ELECT AI RDL 4U7 50V LO ESR	P6		240-00010-76	PLUG HEADER 10WAY MICROMATCH PCB MTD 1-
C428		020-57470-10	CAP ELECT AI RDL 4U7 50V LO ESR	P7		240-00020-72	HEADER 2 WAY PCB MTG ULTREX
C429		015-23680-08	CAP CER 0805 CHIP 680P 10% X7R 50V	Q100		000-10003-12	(S) XSTR SMD BFR31 N JFET SOT-23
C430		020-08560-09	CAP ELECT RADL 56M 50V 6.3X15.5MM L/S	Q101		000-10095-10	(S) XSTR SMD MMBR951 NPN UHF SOT-23
C431		015-25100-08	CAP CER 0805 CHIP 10N 10% X7R 50V	Q102		000-10008-57	(S) XSTR SMD BCW70 PNP SOT23 AF SML SIG
C451		015-24100-08	CAP CER 0805 CHIP 1N 10% X7R 50V	Q103		000-10095-10	(S) XSTR SMD MMBR951 NPN UHF SOT-23
C455		015-24100-08	CAP CER 0805 CHIP 1N 10% X7R 50V	Q105		000-10095-10	(S) XSTR SMD MMBR951 NPN UHF SOT-23
D1		001-00012-90	(S) DIODE MR2520L OVERVOLT SUPPRESSOR	Q106		000-10008-48	(S) XSTR SMD BCW60/BC848B215 NPN SOT23 A
D101		001-10041-90	(S) DIODE SMD BB419 VARACTOR	Q107		000-10008-92	(S) XSTR SMD BFS17 NPN SOT-23 UHF SMALL
D102		001-10041-90	(S) DIODE SMD BB419 VARACTOR	Q108		000-10008-92	(S) XSTR SMD BFS17 NPN SOT-23 UHF SMALL
D103		001-10041-90	(S) DIODE SMD BB419 VARACTOR	Q109		000-10008-24	(S) XSTR SMD BF824 PNP SOT-23 RF SMALL S
D105		001-10000-18	(S) DIODE SMD BAT18 BANDSWITCH SOT-23 SI	Q110		000-10008-92	(S) XSTR SMD BFS17 NPN SOT-23 UHF SMALL
D106		001-10000-18	(S) DIODE SMD BAT18 BANDSWITCH SOT-23 SI	Q115		000-10008-48	(S) XSTR SMD BCW60/BC848B215 NPN SOT23 A
D107		001-10000-17	(S) DIODE SMD DUAL BAT-17 SCHOTTKY SML S	Q201		000-10008-57	(S) XSTR SMD BCW70 PNP SOT23 AF SML SIG
D108		001-10000-17	(S) DIODE SMD DUAL BAT-17 SCHOTTKY SML S	Q202		000-10008-48	(S) XSTR SMD BCW60/BC848B215 NPN SOT23 A
D110		001-10000-17	(S) DIODE SMD DUAL BAT-17 SCHOTTKY SML S	Q203		000-10008-48	(S) XSTR SMD BCW60/BC848B215 NPN SOT23 A
D111		001-10000-17	(S) DIODE SMD DUAL BAT-17 SCHOTTKY SML S	Q204		000-10008-48	(S) XSTR SMD BCW60/BC848B215 NPN SOT23 A
D140A		001-10000-18	(S) DIODE SMD BAT18 BANDSWITCH SOT-23 SI	Q205		000-10008-57	(S) XSTR SMD BCW70 PNP SOT23 AF SML SIG
D200		001-10000-99	(S) DIODE SMD BAV99 DUAL SWITCH SINGLE INL	Q206		000-10008-48	(S) XSTR SMD BCW60/BC848B215 NPN SOT23 A
D202		001-10000-70	(S) DIODE SMD BAV70 DUAL SWITCH SOT-23 C	Q207		000-10008-57	(S) XSTR SMD BCW70 PNP SOT23 AF SML SIG
D203		001-10041-90	(S) DIODE SMD BB419 VARACTOR	Q208		000-10008-48	(S) XSTR SMD BCW60/BC848B215 NPN SOT23 A
D204		001-10041-90	(S) DIODE SMD BB419 VARACTOR	Q209		000-10008-57	(S) XSTR SMD BCW70 PNP SOT23 AF SML SIG
D205		001-10041-90	(S) DIODE SMD BB419 VARACTOR	Q210		000-10003-12	(S) XSTR SMD BFR31 N JFET SOT-23
D206		001-10041-90	(S) DIODE SMD BB419 VARACTOR	Q211		000-10008-07	(S) XSTR SMD BC807 PNP SOT-23 AF LO PWR
D208		001-10000-18	(S) DIODE SMD BAT18 BANDSWITCH SOT-23 SI	Q212		000-10003-10	(S) XSTR SMD MMBFJ310 JFET SOT-23 UHF
D209		001-10000-18	(S) DIODE SMD BAT18 BANDSWITCH SOT-23 SI	Q213		000-10008-48	(S) XSTR SMD BCW60/BC848B215 NPN SOT23 A
D301		001-00013-45	(S) DIODE SCHOTTKY 1SS97/2	Q214		000-10095-10	(S) XSTR SMD MMBR951 NPN UHF SOT-23
D302		001-10000-70	(S) DIODE SMD BAV70 DUAL SWITCH SOT-23 C	Q215		000-10095-10	(S) XSTR SMD MMBR951 NPN UHF SOT-23
D303		001-00012-50	(S) DIODE PIN UM9401 UHF PWR SWITCH	Q301		000-10095-10	(S) XSTR SMD MMBR951 NPN UHF SOT-23
D304		001-00012-50	(S) DIODE PIN UM9401 UHF PWR SWITCH	Q302		000-10044-27	(S) XSTR SMD MRF4427 SO-8
D401		001-10000-70	(S) DIODE SMD BAV70 DUAL SWITCH SOT-23 C	Q303		000-10008-48	(S) XSTR SMD BCW60/BC848B215 NPN SOT23 A
IC101		002-10033-71	(S) IC SMD MC3371D-R2 FM IF DETECT RSSI	Q304		000-00012-15	(S) XSTR BD234 PNP AF PWR TO126
IC201		002-10451-58	(S) IC SMD MC145158DW2 FREQ SYNTH SOIC	Q305		000-00023-14	(S) XSTR BFQ43 NPN TO-39 VHF PWR 4W
IC202		002-10330-78	(S) IC MC33078D-R2 DUAL AMP LO NOISE SO	Q306		000-00032-90	(S) XSTR MRF1946A VHF PWR 30W STUD MTG
IC203		002-10120-22	(S) IC SMD MC12022AD-R2 PRESEC 8-P	Q307		000-10008-48	(S) XSTR SMD BCW60/BC848B215 NPN SOT23 A
IC402		002-00013-70	(S) IC TDA1020 AF PWR AMP 9PIN SIL	Q308		000-10008-07	(S) XSTR SMD BC807 PNP SOT-23 AF LO PWR
IC403		002-00078-08	(S) IC MC7808ACT 8V REG(LINEAR)1AMP TO-	Q309		000-10008-07	(S) XSTR SMD BC807 PNP SOT-23 AF LO PWR
IC404		002-00078-05	(S) IC MC7805ACT 5V REG(LINEAR)1AMP TO-	Q401		000-10008-57	(S) XSTR SMD BCW70 PNP SOT23 AF SML SIG
				Q402		000-10008-17	(S) XSTR SMD BC817-25 NPN SOT-23 AF LO P
L1		030-50000-00	LINK WIRE AI ZERO OHM 0.6MM WIRE	R100		036-13180-00	RES M/F 0805 CHIP 180E 5%
L101		052-08145-45	COIL A/W 4.5T/4.5MM HOR 0.8MM WIRE	R101		036-14390-00	RES M/F 0805 CHIP 3K9 5%
L104		050-00016-68	COIL RF 4.5 T FE SLUG 7.5MM2 23.5PF @100	R102		036-13560-00	RES M/F 0805 CHIP 560E 5%
L105		050-00016-68	COIL RF 4.5 T FE SLUG 7.5MM2 23.5PF @100	R103		036-14220-00	RES M/F 0805 CHIP 2K2 5%
L106		050-00016-68	COIL RF 4.5 T FE SLUG 7.5MM2 23.5PF @100	R104		036-13120-00	RES M/F 0805 CHIP 120E 5%
L107		050-00016-65	COIL BALUN 7.2MM2 5X0.5PINS 5T/4 456DB-1	R105		036-12180-00	RES M/F 0805 CHIP 18E 5%
L108		050-00016-65	COIL BALUN 7.2MM2 5X0.5PINS 5T/4 456DB-1	R106		036-16100-00	RES M/F 0805 CHIP 100K 5%
L109		052-08135-25	COIL A/W 2.5T/3.5MM HOR 0.8MM WIRE	R107		036-16100-00	RES M/F 0805 CHIP 100K 5%
L110		056-00021-61	IND FXD 1.0UH 10% PHENOLIC 10MM L/S	R108		036-16100-00	RES M/F 0805 CHIP 100K 5%
L114		050-00016-62	COIL IF 1UH AT 30MHZ 6MMSQX6 2MMH CAN 29	R109		036-10000-00	RES M/F 0805 CHIP ZERO OHM
L116		050-00016-62	COIL IF 1UH AT 30MHZ 6MMSQX6 2MMH CAN 29	R110		036-16150-00	RES M/F 0805 CHIP 150K 5%
L117		050-00016-65	COIL BALUN 7.2MM2 5X0.5PINS 5T/4 456DB-1	R111		036-16150-00	RES M/F 0805 CHIP 150K 5%
L118		050-00016-65	COIL BALUN 7.2MM2 5X0.5PINS 5T/4 456DB-1	R112		036-12470-00	RES M/F 0805 CHIP 47E 5%
L119		050-00016-55	COIL TAIT NO 655 455KHZ QUAD COIL 7MM GA CA	R113		036-11470-00	RES M/F 0805 CHIP 4E7 10%
L120		057-10005-03	IND 0805 BLM21B05 EMI SUPRSN 5 OHM AT 10	R114		036-13820-00	RES M/F 0805 CHIP 820E 5%
L200		057-10005-03	IND 0805 BLM21B05 EMI SUPRSN 5 OHM AT 10	R115		036-15120-00	RES M/F 0805 CHIP 12K 5%
L202		056-10100-00	IND FXD SMD 100NH 3.2'2.5"1.6 SIEMENS SM	R116		036-11470-00	RES M/F 0805 CHIP 4E7 10%
L203		050-00016-62	COIL IF 1UH AT 30MHZ 6MMSQX6 2MMH CAN 29				

Ref	Var	IPN	Description	Ref	Var	IPN	Description
R117		036-12100-00	RES M/F 0805 CHIP 10E 5%	R261		036-12100-00	RES M/F 0805 CHIP 10E 5%
R118		036-13100-00	RES M/F 0805 CHIP 100E 5%	R262		036-14220-00	RES M/F 0805 CHIP 2K2 5%
R119		036-12100-00	RES M/F 0805 CHIP 10E 5%	R269		036-12100-00	RES M/F 0805 CHIP 10E 5%
R120		036-13820-00	RES M/F 0805 CHIP 820E 5%	R270		036-12100-00	RES M/F 0805 CHIP 10E 5%
R121		036-13180-00	RES M/F 0805 CHIP 180E 5%	R271		036-13150-00	RES M/F 0805 CHIP 150E 5%
R122		036-16100-00	RES M/F 0805 CHIP 100K 5%	R272		036-13150-00	RES M/F 0805 CHIP 150E 5%
R123		036-16100-00	RES M/F 0805 CHIP 100K 5%	R273		036-12100-00	RES M/F 0805 CHIP 10E 5%
R124		036-16100-00	RES M/F 0805 CHIP 100K 5%	R274		036-14390-00	RES M/F 0805 CHIP 3K9 5%
R125		036-12100-00	RES M/F 0805 CHIP 10E 5%	R275		036-12100-00	RES M/F 0805 CHIP 10E 5%
*R129		036-10000-00	RES M/F 0805 CHIP ZERO OHM	R278		036-16100-00	RES M/F 0805 CHIP 100K 5%
*R130		036-10000-00	RES M/F 0805 CHIP ZERO OHM	R282		036-13120-00	RES M/F 0805 CHIP 120E 5%
R131		036-13100-00	RES M/F 0805 CHIP 100E 5%	R284		036-15100-00	RES M/F 0805 CHIP 10K 5%
R132		036-14220-00	RES M/F 0805 CHIP 2K2 5%	R285		036-15150-00	RES M/F 0805 CHIP 15K 5%
R133		036-13270-00	RES M/F 0805 CHIP 270E 5%	R286		036-14680-00	RES M/F 0805 CHIP 6K8 5%
R135		036-15100-00	RES M/F 0805 CHIP 10K 5%	R287		036-16100-00	RES M/F 0805 CHIP 100K 5%
R138		036-16100-00	RES M/F 0805 CHIP 100K 5%	R288		036-16180-00	RES M/F 0805 CHIP 180K 5%
R140		036-15680-00	RES M/F 0805 CHIP 68K 5%	R300		030-52680-20	RES FILM AI 68E 5% 0.4W 4X1.6MM
R140A		036-15330-00	RES M/F 0805 CHIP 33K 5%	R301		036-13330-00	RES M/F 0805 CHIP 330E 5%
R141		036-14150-00	RES M/F 0805 CHIP 1K5 5%	R302		036-14100-00	RES M/F 0805 CHIP 1K 5%
R142		036-15270-00	RES M/F 0805 CHIP 27K 5%	R303		036-13680-00	RES M/F 0805 CHIP 680E 5%
R142A		036-16100-00	RES M/F 0805 CHIP 100K 5%	R304		036-12220-00	RES M/F 0805 CHIP 22E 5%
R143		036-15330-00	RES M/F 0805 CHIP 33K 5%	R305		036-12100-00	RES M/F 0805 CHIP 10E 5%
R143A		036-15330-00	RES M/F 0805 CHIP 33K 5%	R306		036-12100-00	RES M/F 0805 CHIP 10E 5%
R144		036-15680-00	RES M/F 0805 CHIP 68K 5%	R307		030-53680-20	RES FILM AI 680E 5% 0.4W 4X1.6MM
R144A		036-16120-00	RES M/F 0805 CHIP 120K 5%	R308		030-53330-20	RES FILM AI 330E 5% 0.4W 4X1.6MM
R145		036-14150-00	RES M/F 0805 CHIP 1K5 5%	R309		030-52330-20	RES FILM AI 33E 5% 0.4W 4X1.6MM
R145A		036-15330-00	RES M/F 0805 CHIP 33K 5%	R310		030-53330-20	RES FILM AI 330E 5% 0.4W 4X1.6MM
R146		036-12220-00	RES M/F 0805 CHIP 22E 5%	R311		036-13820-00	RES M/F 0805 CHIP 820E 5%
R147		036-13220-00	RES M/F 0805 CHIP 220E 5%	R312		036-13680-00	RES M/F 0805 CHIP 680E 5%
R148		036-13560-00	RES M/F 0805 CHIP 560E 5%	R313		030-52330-20	RES FILM AI 33E 5% 0.4W 4X1.6MM
R150		036-16100-00	RES M/F 0805 CHIP 100K 5%	R314		036-12100-00	RES M/F 0805 CHIP 10E 5%
*R151		036-14330-00	RES M/F 0805 CHIP 3K3 5%	R315		036-12470-00	RES M/F 0805 CHIP 47E 5%
*R152		036-16390-00	RES M/F 0805 CHIP 390K 5%	R316		030-52100-20	RES FILM AI 10E 5% 0.4W 4X1.6MM
R153		036-14100-00	RES M/F 0805 CHIP 1K 5%	R317		036-12100-00	RES M/F 0805 CHIP 10E 5%
RV153		042-05470-07	RES PRESET 47K CARBON 6MM FLAT DUAL ADJ	R318		030-52100-20	RES FILM AI 10E 5% 0.4W 4X1.6MM
R155		036-16100-00	RES M/F 0805 CHIP 100K 5%	R318A		030-52100-20	RES FILM AI 10E 5% 0.4W 4X1.6MM
R156		036-13100-00	RES M/F 0805 CHIP 100E 5%	R319		030-53330-20	RES FILM AI 330E 5% 0.4W 4X1.6MM
R157		036-15100-00	RES M/F 0805 CHIP 10K 5%	R320		030-55150-20	RES FILM AI 15K 5% 0.4W 4X1.6MM
R158		036-14100-00	RES M/F 0805 CHIP 1K 5%	R322		036-12220-00	RES M/F 0805 CHIP 22E 5%
R159		036-12470-00	RES M/F 0805 CHIP 47E 5%	R323		030-52100-20	RES FILM AI 10E 5% 0.4W 4X1.6MM
R160		036-12100-00	RES M/F 0805 CHIP 10E 5%	R324		032-33180-00	RES M/F PWR 180E 5% 1W 12X4.5MM
R161		036-14100-00	RES M/F 0805 CHIP 1K 5%	RV324		042-06470-06	RES PRESET 470/500K 25% 6MM ROUND TOP A
R162		036-10000-00	RES M/F 0805 CHIP ZERO OHM	R325		030-53180-20	RES FILM AI 180E 5% 0.4W 4X1.6MM
*R162		036-10000-00	RES M/F 0805 CHIP ZERO OHM	R326		036-16220-00	RES M/F 0805 CHIP 220K 5%
*R163		036-10000-00	RES M/F 0805 CHIP ZERO OHM	R327		036-14100-00	RES M/F 0805 CHIP 1K 5%
*R194		036-10000-00	RES M/F 0805 CHIP ZERO OHM	R328		030-53150-20	RES FILM AI 150E 5% 0.4W 4X1.6MM
R195		036-15680-00	RES M/F 0805 CHIP 68K 5%	R329		036-15470-00	RES M/F 0805 CHIP 47K 5%
R196		036-13100-00	RES M/F 0805 CHIP 100E 5%	R330		036-16220-00	RES M/F 0805 CHIP 220K 5%
R197		036-13100-00	RES M/F 0805 CHIP 100E 5%	R331		036-16270-00	RES M/F 0805 CHIP 270K 5%
R198		036-14220-00	RES M/F 0805 CHIP 2K2 5%	R332		036-13100-00	RES M/F 0805 CHIP 100E 5%
R199		036-13100-00	RES M/F 0805 CHIP 100E 5%	R333		036-14220-00	RES M/F 0805 CHIP 2K2 5%
R213		036-13330-00	RES M/F 0805 CHIP 330E 5%	R334		036-15560-00	RES M/F 0805 CHIP 56K 5%
R214		036-14120-00	RES M/F 0805 CHIP 1K2 5%	R335		036-14180-00	RES M/F 0805 CHIP 1K8 5%
R217		036-12470-00	RES M/F 0805 CHIP 47E 5%	R336		036-13680-00	RES M/F 0805 CHIP 680E 5%
R218		036-15120-00	RES M/F 0805 CHIP 12K 5%	R337		036-10000-00	RES M/F 0805 CHIP ZERO OHM
R219		036-13270-00	RES M/F 0805 CHIP 270E 5%	R338		036-13220-00	RES M/F 0805 CHIP 220E 5%
R220		036-14680-00	RES M/F 0805 CHIP 6K8 5%	R339		036-15100-00	RES M/F 0805 CHIP 10K 5%
R221		036-13330-00	RES M/F 0805 CHIP 330E 5%	R340		036-16220-00	RES M/F 0805 CHIP 220K 5%
R222		036-12470-00	RES M/F 0805 CHIP 47E 5%	R341		036-13220-00	RES M/F 0805 CHIP 220E 5%
RV222		042-05470-07	RES PRESET 47K CARBON 6MM FLAT DUAL ADJ	R418		036-13680-00	RES M/F 0805 CHIP 680E 5%
R223		036-15220-00	RES M/F 0805 CHIP 22K 5%	R420		036-15560-00	RES M/F 0805 CHIP 56K 5%
R224		036-15100-00	RES M/F 0805 CHIP 10K 5%	R420A		036-10000-00	RES M/F 0805 CHIP ZERO OHM
R225		036-15220-00	RES M/F 0805 CHIP 22K 5%	R421		036-15560-00	RES M/F 0805 CHIP 56K 5%
R226		036-15100-00	RES M/F 0805 CHIP 10K 5%	R421A		036-10000-00	RES M/F 0805 CHIP ZERO OHM
R227		036-15100-00	RES M/F 0805 CHIP 10K 5%	R422		036-12220-00	RES M/F 0805 CHIP 22E 5%
R228		036-14330-00	RES M/F 0805 CHIP 3K3 5%	R425		036-14100-00	RES M/F 0805 CHIP 1K 5%
R229		036-12220-00	RES M/F 0805 CHIP 22E 5%	R426		036-11470-00	RES M/F 0805 CHIP 4E7 10%
R230		036-13390-00	RES M/F 0805 CHIP 390E 5%	R427		036-11470-00	RES M/F 0805 CHIP 4E7 10%
R231		036-13180-00	RES M/F 0805 CHIP 180E 5%	R428		036-12220-00	RES M/F 0805 CHIP 22E 5%
R232		036-14220-00	RES M/F 0805 CHIP 2K2 5%	R429		036-15270-00	RES M/F 0805 CHIP 27K 5%
R233		036-13680-00	RES M/F 0805 CHIP 680E 5%	R430		036-14680-00	RES M/F 0805 CHIP 6K8 5%
R234		036-13180-00	RES M/F 0805 CHIP 180E 5%	R431		036-16100-00	RES M/F 0805 CHIP 100K 5%
R235		036-13330-00	RES M/F 0805 CHIP 330E 5%	R432		036-12100-00	RES M/F 0805 CHIP 10E 5%
R236		036-12470-00	RES M/F 0805 CHIP 47E 5%	R433		036-13100-00	RES M/F 0805 CHIP 100E 5%
R237		036-13100-00	RES M/F 0805 CHIP 100E 5%	R434		036-12470-00	RES M/F 0805 CHIP 47E 5%
R238		036-14820-00	RES M/F 0805 CHIP 8K2 5%	R437		036-14100-00	RES M/F 0805 CHIP 1K 5%
R239		036-15220-00	RES M/F 0805 CHIP 22K 5%				
R240		036-16100-00	RES M/F 0805 CHIP 100K 5%				
R241		036-14120-00	RES M/F 0805 CHIP 1K2 5%				
R242		036-12220-00	RES M/F 0805 CHIP 22E 5%				
R243		036-14220-00	RES M/F 0805 CHIP 2K2 5%				
R244		036-12220-00	RES M/F 0805 CHIP 22E 5%				
R245		036-12220-00	RES M/F 0805 CHIP 22E 5%				
R246		036-13470-00	RES M/F 0805 CHIP 470E 5%				
R247		036-12470-00	RES M/F 0805 CHIP 47E 5%				
R248		036-16100-00	RES M/F 0805 CHIP 100K 5%				
R249		036-12100-00	RES M/F 0805 CHIP 10E 5%				
R250		036-14220-00	RES M/F 0805 CHIP 2K2 5%				
R251		036-13120-00	RES M/F 0805 CHIP 120E 5%				
R252		036-14180-00	RES M/F 0805 CHIP 1K8 5%				
R253		036-13820-00	RES M/F 0805 CHIP 820E 5%				
R254		036-12470-00	RES M/F 0805 CHIP 47E 5%				
R255		036-12100-00	RES M/F 0805 CHIP 10E 5%				
R256		036-14150-00	RES M/F 0805 CHIP 1K5 5%				
R257		036-14120-00	RES M/F 0805 CHIP 1K2 5%				
R258		036-12100-00	RES M/F 0805 CHIP 10E 5%				
R259		036-13220-00	RES M/F 0805 CHIP 220E 5%				
R260		036-12180-00	RES M/F 0805 CHIP 18E 5%				

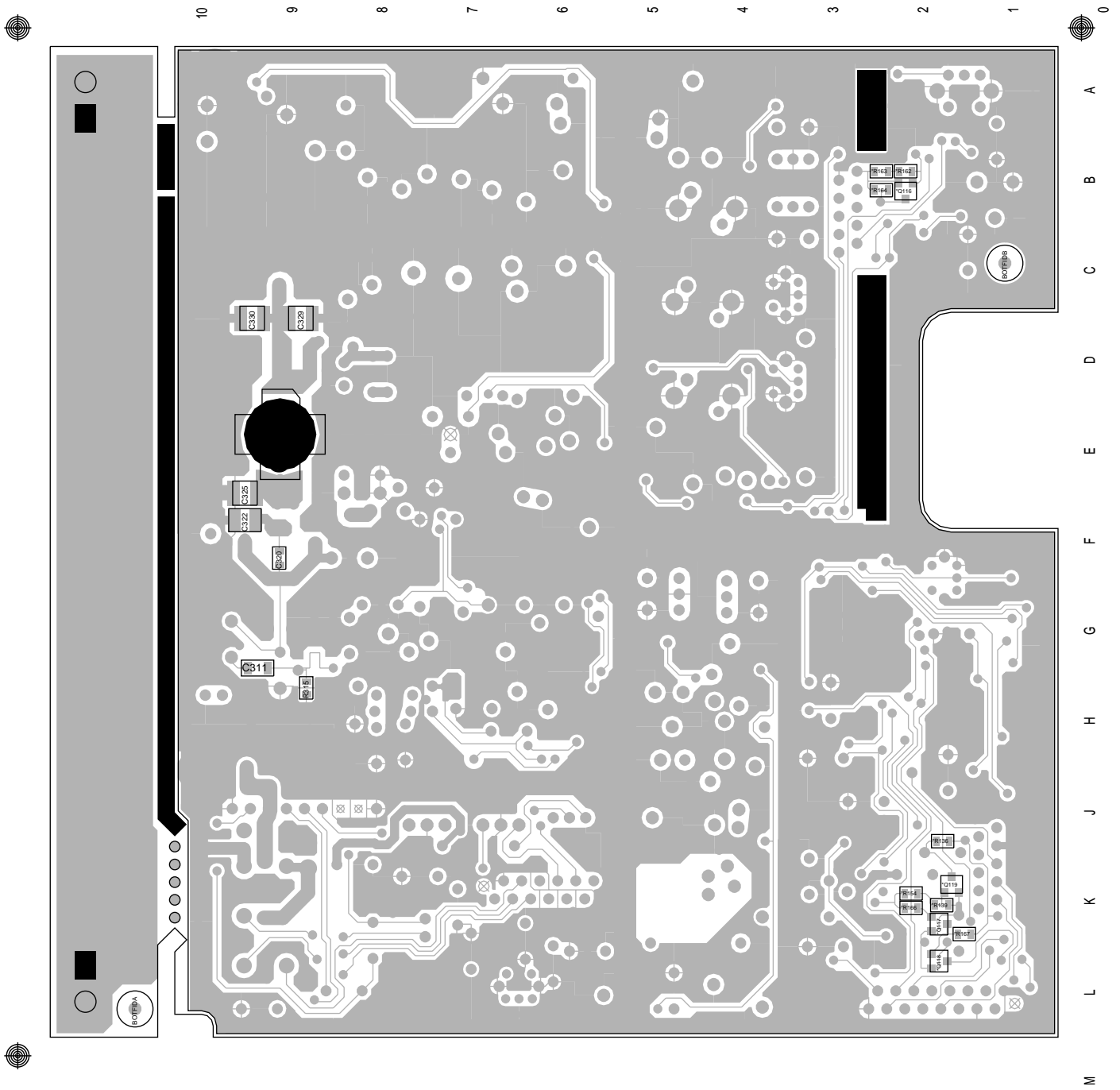
T2000-300 Mechanical & Miscellaneous Parts

IPN	Description	IPN	Description
065-00010-08	BEAD FERRITE 4S3 3*0.7*10MM RED L308, L314, L326		
065-00010-11	BEAD FERRITE 4S3 3*1*4MM RED L1, L309, L300, L300A		
200-00010-05	WIRE T/C 0.5MM		
205-00010-12	CABLE FLAT RBBN 16 CORE 16/7/0.1 GREY		
220-01314-01	PCB T2K3 PROG BAND WIDTH 136-174M RF		
240-00020-51	PLUG 12 WAY 2*6 FLAT CABLE TERMN		
240-00020-54	PLUG 16 WAY 2X8 FLAT CABLE TERMN MICROMATCH		
240-02100-11	SKT COAX BNC 3.5MM PNL NO EARTH TAG		
303-23135-01	COVER BTTM A1M2505 T2000 PNTD CMLPT		
303-50070-00	CLIP A4M2648 XSTR MTG T2000PA/T555'S		
303-50076-00	CLIP A4M2524 HSINK T2000 RF PRE-DRIVER TO-39		
303-50077-00	CLIP A3M2525 T2000 AUDIO IC AND REG		
308-13103-01	CHASSIS A1M2503 D-CAST T2000 PNTD CMLPT		
316-85094-00	PLATE A4M2160 BNC MTG UK 5X5 SERIES		
319-01164-01	SHIELD A1M2507 DIE CAST T2000 MICROP		
319-01167-00	SHIELD RX A3M2594 T2000		
349-00020-30	SCREW TAPTITE M3X6MM PAN POZI BZ		
349-00020-31	SCREW TAPTITE M3X10MM PAN POZI BZ		
349-00020-32	SCREW TAPTITE M3X8MM PAN POZI BZ		
349-00020-34	SCREW M3*12 PAN POZI TAPTITE BZ		
349-00020-48	SCREW M4X25MM PAN POZI TAPTITE II BRIGHT ZINC		
349-00020-49	SCREW TAPTITE M4X35MM PAN POZI BZ		
352-00010-35	NUT 8-32 UNC HEX RF PWR XSTR MTG		
360-01053-01	PLUG A3M2563 PLASTIC D-RANGE BLANKING		
362-01027-01	GASKET A4M2564 RUBBER SEAL T2000 MAIN CONN		
362-01028-00	GASKET A4M2652 130X3MM CONDUCT STRIPS T2000		
362-01058-00	GASKET TO-126 11.1X7.9 D2.4 SIL INSULATION FOR Q304		

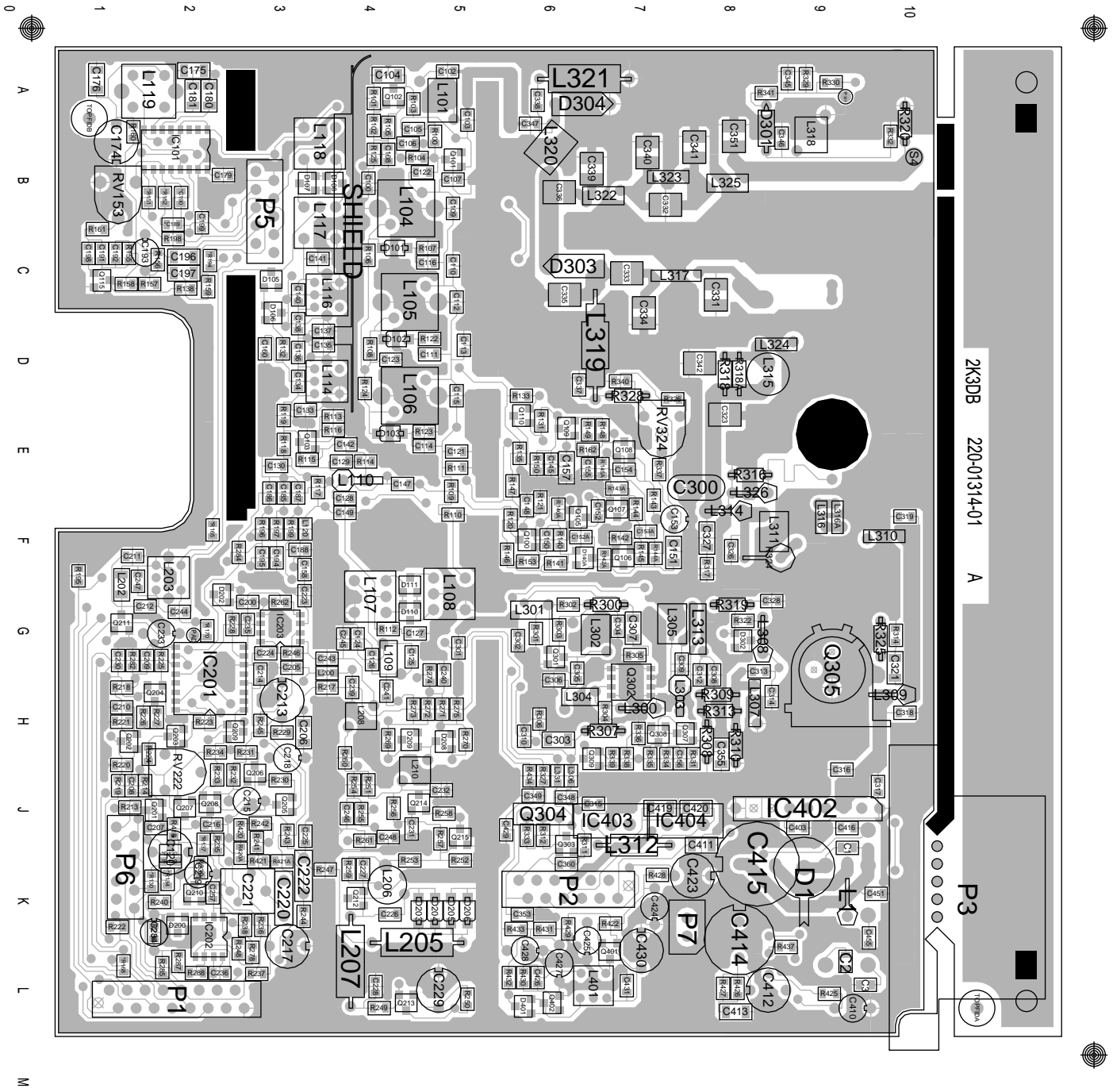
T2000-300 Grid Reference Index (IPN 220-01314-01)

Device	PCB	Circuit	Device	PCB	Circuit	Device	PCB	Circuit	Device	PCB	Circuit
C1	1:J10	1-V9	C193	1:C2	1-N7	C320	2:F10	1-N0	D200	1:K3	2-K2
C2	1:K10	1-V8	C194	1:F4	1-A8	C321	1:G11	1-M1	D202	1:G3	1-C5
C3	1:L11	1-V8	C195	1:F4	1-A7	C322	2:F10	1-N0	D203	1:K6	1-A0
C100	1:A5	1-T3	C197	1:C3	1-O7	C323	2:F10	1-N0	D204	1:K6	1-A0
C102	1:A6	1-S2	C198	1:C2	1-M6	C324	2:E11	1-O0	D205	1:K6	1-A0
C103	1:A6	1-R2	C199	1:B3	1-M7	C325	2:E10	1-P0	D206	1:K6	1-A0
C104	1:A5	1-S3	C200	1:G4	1-B5	C326	1:F10	1-N1	D208	1:H6	1-F0
C105	1:A6	1-R3	C201	1:J3	1-C6	C327	1:G9	1-O1	D209	1:H5	1-F1
C106	1:B6	1-R3	C205	1:G4	1-A2	C328	1:G10	1-L1	D301	1:A9	1-U1
C107	1:B6	1-Q3	C206	1:H4	2-L3	C329	2:D10	1-P0	D302	1:G9	1-L1
C108	1:B5	1-T3	C207	1:J3	1-B6	C330	2:C10	1-Q0	D303	1:C7	1-R1
C109	1:B5	1-Q3	C208	1:J2	1-C7	C331	2:C10	1-Q0	D304	1:A7	1-S0
C110	1:B5	1-P3	C209	1:G2	1-C7	C332	1:C9	1-R0	D401	1:L7	1-Q9
C111	1:B6	1-P3	C210	1:H2	1-E7	C333	1:C8	1-R1	D401	1:L7	1-Q9
C112	1:C5	1-P3	C211	1:F2	1-E7	C335	1:C8	1-R0			
C113	1:C5	1-O3	C212	1:G2	1-F7	C336	1:B7	1-S1	H/SINK	1:G10	2-M2
C114	1:C5	1-O3	C213	1:H4	1-D4	C337	1:D8	1-R1			
C115	1:C6	1-O3	C214	1:H4	1-C4	C338	1:A7	1-R0	IC101	1:B3	1-O7
C116	1:B5	1-Q3	C215	1:J4	1-E4	C339	1:B7	1-S0	IC101	1:B3	2-J3
C117	1:C5	1-N3	C216	1:J3	1-E5	C340	1:B8	1-T0	IC101	1:B3	1-L7
C118	1:D5	1-N3	C217	1:K4	1-F4	C341	1:B9	1-T0	IC101	1:B3	1-K6
C119	1:C5	1-N3	C218	1:H4	1-F5	C342	1:D9	1-P1	IC201	1:G3	1-B4
C120	1:E4	1-J3	C219	1:K3	1-G4	C343	1:B8	1-T0	IC202	1:K3	1-J4
C121	1:C6	1-M2	C220	1:K4	1-G5	C344	1:B11	1-V0	IC202	1:K3	2-K3
C122	1:D5	1-M3	C221	1:K4	1-G5	C345	1:A10	1-S1	IC202	1:K3	1-G4
C123	1:D5	1-M3	C222	1:K4	1-H3	C346	1:B10	1-T1	IC203	1:G4	1-D2
C124	1:F6	1-H2	C223	1:G4	1-C2	C347	1:A7	1-S1	IC402	1:J10	1-S8
C125	1:G5	1-G2	C224	1:G4	1-D2	C348	1:J7	1-U2	IC402	1:J10	2-J2
C126	1:G6	1-G2	C225	1:J4	1-H3	C349	1:J7	1-V2	IC403	1:J8	1-L9
C127	1:E6	1-K5	C226	1:K5	1-B1	C351	1:B9	1-T0	IC404	1:J8	1-L8
C128	1:E5	1-L5	C227	1:K5	1-B0	C352	2:G10	1-M1			
C129	1:E5	1-M5	C228	1:K6	1-A0	C353	1:K7	1-V2	L1	1:K10	1-T9
C130	1:E4	1-M6	C229	1:L6	1-B1	C354	1:K7	1-T2	L101	1:A6	1-S2
C131	1:E5	1-M5	C230	1:G2	1-E7	C360	1:J7	1-J1	L104	1:B6	1-P2
C133	1:E4	1-O5	C231	1:J5	1-D0	C362	1:H8	1-P2	L105	1:C6	1-O2
C134	1:D4	1-O6	C232	1:H6	1-E0	C363	1:H9	1-P1	L106	1:D6	1-N2
C135	1:D4	1-P5	C233	1:G3	1-D7	C403	1:J10	1-S8	L107	1:E6	1-J3
C136	1:D4	1-P5	C234	1:K3	1-I3	C410	1:L10	1-S9	L108	1:D6	1-L3
C137	1:D4	1-P5	C235	1:G4	1-B3	C411	1:J9	1-T8	L109	1:G6	1-G3
C138	1:D4	1-P5	C236	1:J5	1-B0	C412	1:L9	1-T9	L110	1:E5	1-L5
C140	1:C4	1-Q6	C237	1:L5	1-B1	C413	1:L9	1-U8	L114	1:D5	1-O5
C141	1:C4	1-Q5	C238	1:K5	1-C0	C414	1:K9	1-U9	L116	1:C5	1-Q5
C145	1:E7	1-T4	C239	1:L5	1-B2	C415	1:K9	1-T9	L117	1:B4	1-R5
C147	1:F6	1-O5	C240	1:G6	1-G1	C416	1:J10	1-U8	L118	1:B4	1-T5
C148	1:F7	1-O4	C241	1:G5	1-F2	C419	1:J8	1-K8	L119	1:A3	1-K8
C149	1:F5	1-L4	C243	1:G5	1-E2	C420	1:J9	1-L8	L120	1:F4	1-K4
C150	1:F7	1-P4	C244	1:F3	1-G7	C423	1:K9	1-M9	L121	1:B5	1-T3
C151	1:F8	1-O5	C245	1:G5	1-E2	C424	1:K8	1-M9	L200	1:G5	1-A2
C152	1:F7	1-Q4	C246	1:J5	1-D2	C425	1:K7	1-O8	L202	1:G2	1-E7
#C152A	1:F7	1-P4	C247	1:F2	1-F7	C426	1:L7	1-P9	L203	1:G3	1-G7
C153	1:F8	1-R4	C248	1:J5	1-C2	C427	1:L7	1-Q8	L204	1:K6	1-A0
#C153A	1:F8	1-R4	C257	1:K3	1-F4	C428	1:L7	1-R8	L205	1:K6	1-A0
C154	1:E8	1-S4	C288	1:L3	1-J4	C429	1:J7	1-R8	L206	1:K5	1-B0
C155	1:E7	1-S4	C300	1:F9	1-O1	C430	1:L8	1-N9	L207	1:K5	1-C1
#C156	1:E8	1-T4	C301	1:G6	1-G0	C451	1:K11	1-V9	L208	1:H5	1-D2
C157	1:E7	1-U5	C302	1:G7	1-G0	C455	1:K11	1-W8	L210	1:H5	1-E1
C158	1:F4	1-K4	C303	1:H7	1-K0				L300	1:H8	1-I0
C159	1:D4	1-U5	C304	1:G8	1-H1	D1	1:K10	1-U9	L301	1:G7	1-G0
C160	1:F7	1-Q4	C305	1:G7	1-H0	D101	1:B5	1-P3	L302	1:G7	1-H0
C174	1:B2	1-J8	C306	1:H7	1-H0	D102	1:C5	1-O3	L303	1:H8	1-J1
C175	1:A3	1-K8	C307	1:G8	1-I1	D103	1:D5	1-N3	L304	1:H7	1-I0
C176	1:A2	1-K8	C308	1:G9	1-K0	D105	1:C4	1-T6	L305	1:G8	1-J0
C179	1:B3	2-I3	C309	1:G8	1-K0	D106	1:D4	1-T5	L306	1:J7	1-K1
C180	1:A3	1-L8	C310	1:H7	1-J1	D107	1:B5	1-S5	L307	1:H9	1-L0
C181	1:A3	1-L8	C311	2:H10	1-M0	D107	1:B5	1-S6	L308	1:G10	1-M1
C185	1:E4	1-I6	C312	1:G9	1-K0	D108	1:B4	1-S5	L309	1:H11	1-N1
C186	1:E4	1-J6	C313	1:G9	1-L0	D108	1:B4	1-S5	L310	1:F11	1-N1
C187	1:E4	1-O8	C314	1:H9	1-M0	D110	1:E6	1-K3	L311	1:F10	1-N1
C188	1:F4	1-A6	C315	1:J7	1-L1	D110	1:E6	1-K3	L312	1:J8	1-L2
C189	1:B3	1-K6	C316	1:J10	1-O2	D111	1:E6	1-K2	L313	1:G9	1-K0
C190	1:B3	1-K7	C317	1:J11	1-O2	D111	1:E6	1-K3	L314	1:F9	1-N1
C191	1:C2	1-M6	C318	1:H11	1-M2	#D140A	1:F7	1-Q4	L315	1:D9	1-O1
C192	1:C2	1-M7	C319	1:F11	1-M1	D200	1:K3	2-K2	L316	1:C9	1-Q1

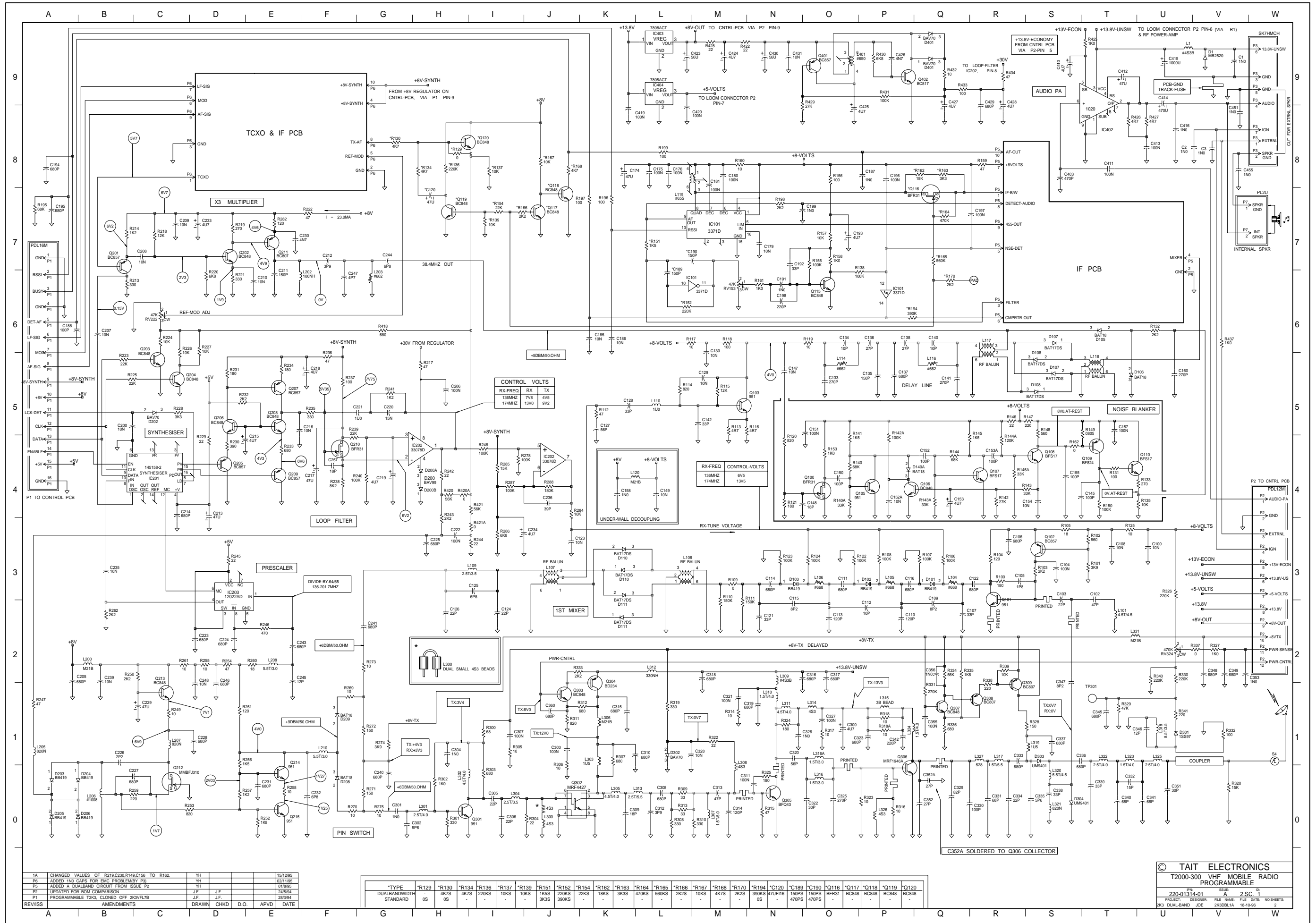
Device	PCB	Circuit	Device	PCB	Circuit	Device	PCB	Circuit	Device	PCB	Circuit
L317	1:F9	1-O0	R118	1:E5	1-N6	R242	1:J4	1-H4	R344	1:H8	1-Q2
L318	1:A10	1-T1	R119	1:E5	1-O5	R243	1:J4	1-H4	R345	1:H8	1-Q1
L319	1:D8	1-R1	R120	1:F7	1-O4	R244	1:K4	1-I3	R346	1:H8	1-Q1
L320	1:B7	1-R0	R121	1:E7	1-O4	R245	1:H4	1-D3	R347	1:H8	1-Q2
L321	1:A7	1-R0	R131	1:E7	1-U4	R246	1:G4	1-D2	R418	1:J3	1-D6
L322	1:B8	1-S1	R132	1:D4	1-U6	R247	1:K4	1-A1	R420	1:J4	1-H4
L323	1:B8	1-T1	R133	1:D7	1-U4	R248	1:L4	1-H4	R420A	1:J4	1-H4
L324	1:D10	1-P1	R135	1:E7	1-U4	R249	1:L5	1-C1	R421	1:K4	1-I4
L325	1:B9	1-T1	R138	1:C3	1-P7	R250	1:L5	1-B2	R421A	1:K4	1-I3
L331	1:J7	1-T2	#R140	1:F7	1-P4	R251	1:H5	1-D1	R422	1:K8	1-N9
L401	1:L7	1-O9	#R140A	1:F7	1-P4	R252	1:J6	1-D0	R425	1:L10	1-S9
			R141	1:F7	1-P4	R253	1:J5	1-B0	R426	1:L9	1-T8
P1	1:L3	2-D3	#R142	1:F8	1-R4	R254	1:H5	1-D2	R427	1:L9	1-U8
P2	1:K7	2-D2	#R142A	1:F8	1-P4	R255	1:J5	1-C2	R428	1:K8	1-M9
P3	1:K10	2-G3	R143	1:E8	1-S4	R256	1:J5	1-D0	R429	1:K7	1-N8
P5	1:B4	2-D3	#R143A	1:E8	1-Q4	R257	1:J6	1-D0	R430	1:L7	1-P9
P6	1:K2	2-D2	#R144	1:F8	1-R4	R258	1:J6	1-E0	R431	1:K7	1-P8
P7	1:K9	2-G3	#R144A	1:F8	1-S4	R259	1:K5	1-B0	R432	1:L7	1-Q9
			R145	1:F8	1-R4	R260	1:H5	1-D2	R433	1:K7	1-Q9
Q100	1:F7	1-O4	#R145A	1:E8	1-S4	R261	1:J5	1-C2	R434	1:J7	1-R9
Q101	1:B6	1-Q2	R146	1:F7	1-S5	R262	1:G4	1-B2	R437	1:L10	1-V6
Q102	1:A5	1-R3	R147	1:E7	1-S5	R263	1:K5	1-C0	R700A	2:F10	1-N0
Q103	1:E5	1-N5	R148	1:E7	1-S5	R264	1:K5	1-C0	*R700B	2:G10	2-G0
Q105	1:F7	1-P4	#R149	1:E8	1-T5	R265	1:K5	1-C1	*R700C	2:G10	2-H0
Q106	1:F8	1-Q4	R150	1:E7	1-T4	R269	1:H5	1-F1			
Q107	1:F8	1-R4	R151	1:B3	1-K7	R270	1:H6	1-F0	SHIELD	1:C5	2-M3
#Q108	1:E8	1-S4	R152	1:B3	1-K6	R271	1:H6	1-F0	S4	1:B11	1-W1
Q109	1:E7	1-T4	R153	1:F7	1-O4	R272	1:H6	1-F1			
Q110	1:E7	1-U4	RV153	1:B2	1-L6	R273	1:H6	1-F2	TP2	1:F4	1-J9
Q115	1:C2	1-N6	R154	1:F7	1-Q4	R274	1:G6	1-G1	TP301	1:A10	1-S1
Q200	1:J3	1-C7	R155	1:C2	1-N7	R275	1:H6	1-F0			
Q201	1:J3	1-B7	#R155	1:F7	1-Q4	R278	1:L4	1-I4			
Q202	1:H2	1-D7	R156	1:C3	1-N8	R282	1:G2	1-E7			
Q203	1:H3	1-C5	R157	1:C2	1-N7	R284	1:F3	1-J4			
Q204	1:H3	1-C5	R158	1:C2	1-N7	R285	1:L3	1-I4			
Q205	1:J4	1-D4	R159	1:C3	1-P8	R286	1:K3	1-I3			
Q206	1:H4	1-D5	R160	1:B2	1-L8	R287	1:L3	1-I4			
Q207	1:J3	1-E5	R161	1:C2	1-M6	R288	1:L3	1-J4			
Q208	1:J3	1-E5	R194	1:C3	1-O6	R300	1:K7	1-J2			
Q209	1:H4	1-E4	R195	1:L2	1-A7	R301	1:G7	1-H0			
Q210	1:K3	1-F4	R196	1:F4	1-J7	R302	1:G7	1-G0			
Q211	1:G2	1-E7	R197	1:F4	1-I7	R303	1:G7	1-H0			
Q212	1:K5	1-C0	R198	1:C3	1-M7	R304	1:H7	1-I0			
Q213	1:L5	1-C1	R199	1:F4	1-J9	R305	1:G8	1-I0			
Q214	1:H5	1-E0	R200	1:J3	1-C7	R306	1:H7	1-K1			
Q215	1:J6	1-E0	R201	1:J3	1-C7	R307	1:H8	1-K0			
Q301	1:G7	1-H0	R202	1:J3	1-C7	R308	1:H9	1-K0			
Q302	1:H8	1-J0	R203	1:J3	1-C6	R309	1:H9	1-L0			
Q303	1:J7	1-J1	R213	1:J3	1-B6	R310	1:H9	1-L0			
Q304	1:J7	1-K1	R214	1:J2	1-B7	R311	1:J7	1-J1			
Q305	1:G10	1-N0	R217	1:H5	2-K3	R312	1:J7	1-K1			
Q306	2:E10	1-P0	R218	1:H2	1-C7	R313	1:H9	1-L0			
Q309	1:H8	1-Q1	R219	1:J2	1-D7	R314	1:G11	1-M1			
Q310	1:H8	1-Q1	R220	1:H2	1-D7	R315	2:H10	1-M0			
Q311	1:H7	1-R1	R221	1:H2	1-D7	R316	1:F9	1-O0			
Q401	1:L8	1-O9	R222	1:K2	1-F7	R317	1:G9	1-O1			
Q402	1:L7	1-P9	RV222	1:H3	1-C6	R318	1:D9	1-O1			
			R223	1:H3	1-B5	R318A	1:D9	1-O1			
R100	1:A6	1-R3	R224	1:H3	1-C6	R319	1:G9	1-L1			
R101	1:A5	1-S3	R225	1:G3	1-B5	R320	1:A11	1-W0			
R102	1:A5	1-S3	R226	1:H3	1-C5	R322	1:G9	1-L1			
R103	1:A6	1-R3	R227	1:H2	1-D6	R323	1:G11	1-N1			
R104	1:A6	1-Q3	R228	1:G3	1-C5	R324	1:G8	1-I1			
R105	1:A5	1-S3	R229	1:H4	1-D4	RV324	1:E8	1-U2			
R106	1:B5	1-Q3	R230	1:J4	1-D4	R326	1:D8	1-U2			
R107	1:C5	1-O3	R231	1:H4	1-D5	R327	1:J7	1-V2			
R108	1:D5	1-N3	R232	1:H3	1-D5	R328	1:D8	1-R1			
R109	1:D5	1-L3	R233	1:H3	1-E4	R329	1:A10	1-T1			
R110	1:D5	1-M3	R234	1:H3	1-E5	R330	1:A10	1-U1			
R111	1:E5	1-M2	R235	1:J3	1-F5	R332	1:B11	1-V1			
R112	1:E5	1-K5	R236	1:K4	1-F5	R333	1:J7	1-K2			
R113	1:E5	1-N5	R237	1:L4	1-F5	R337	1:E8	1-U2			
R114	1:E5	1-M5	R238	1:K4	1-F4	R340	1:A10	1-T2			
R115	1:E5	1-M5	R239	1:K3	1-G4	R341	1:A9	1-U1			
R116	1:E5	1-N5	R240	1:K3	1-G4	R342	1:H8	1-P2			
R117	1:E5	1-M6	R241	1:J4	1-G5	R343	1:H8	1-Q2			



T2000-300 RF PCB (IPN 220-01314-01) - Bottom Side



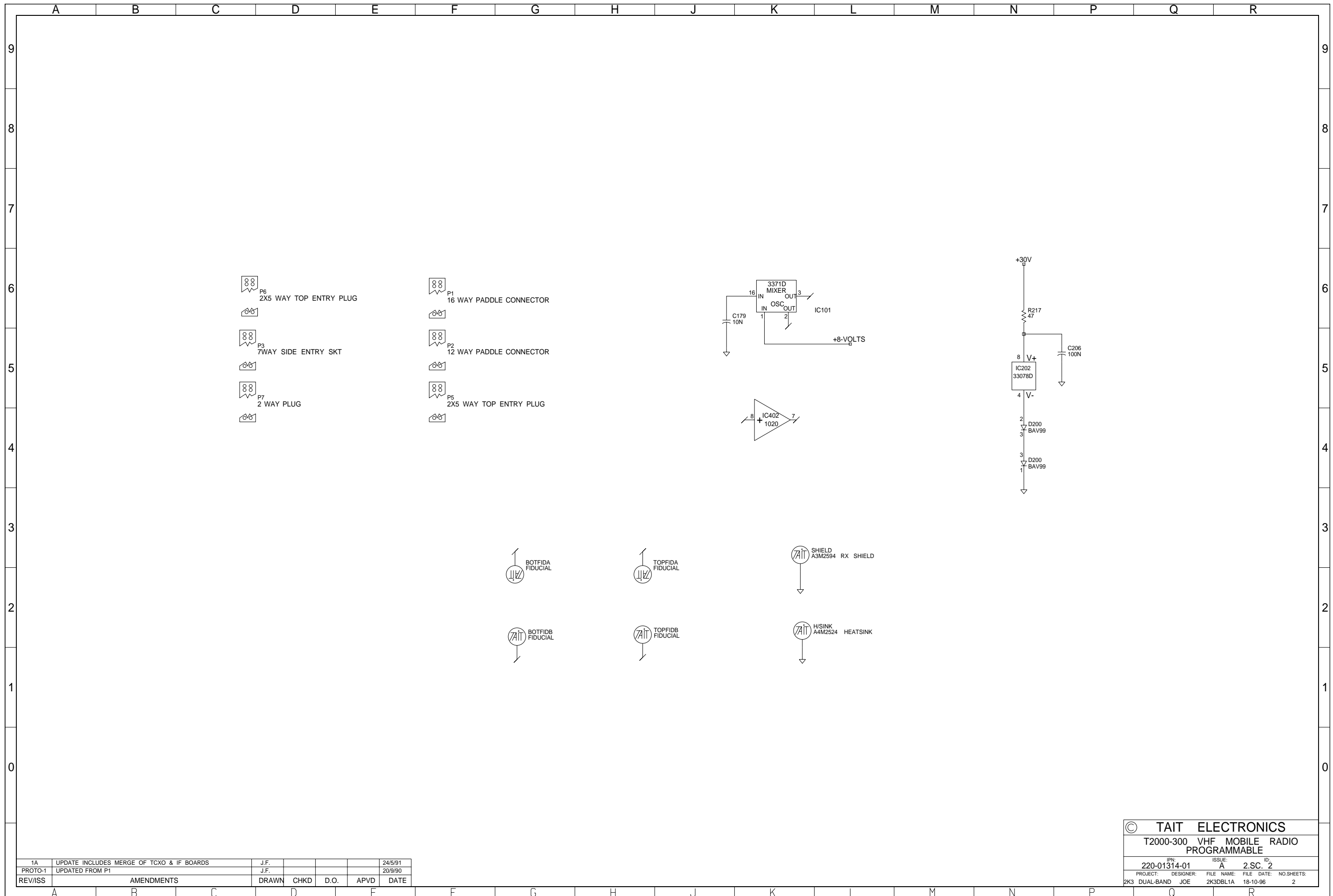
T2000-300 RF PCB (IPN 220-01314-01) - Top Side



1A	CHANGED VALUES OF R219,C230,R149,C156 TO R162.	YH	15/12/96
P6	ADDED 1ND CAPS FOR EMC PROBLEMY P3.	YH	02/11/95
P5	ADDED A DUALBAND CIRCUIT FROM ISSUE P2	YH	01/09/95
P2	UPDATED FOR ROBT COMPARISON.	J.F.	28/05/94
P1	PROGRAMMABLE T2K3. CLONED OFF 2K3VFL7B	J.F.	28/05/94
REV/ISS	AMENDMENTS	DRAWN	CHKD
		D.O.	APVD
			DATE

*TYPE	*R129	*R130	*R134	*R136	*R137	*R139	*R151	*R152	*R154	*R162	*R163	*R164	*R165	*R166	*R167	*R168	*R170	*R194	*C120	*C189	*C190	*Q116	*Q117	*Q118	*Q119	*Q120
DUALBANDWIDTH STANDARD	4K7S	4K7S	220KS	10KS	10KS	10KS	1K5S	220KS	22KS	18KS	3K3S	470KS	560KS	2K2S	10KS	4K7S	390KS	47UF16	150FS	150FS	BFR31	BC848	BC848	BC848	BC848	
OS																										

© TAIT ELECTRONICS
T2000-300 VHF MOBILE RADIO
PROGRAMMABLE
IPN 220-01314-01
ISSUE 2, SC. 1
PROJECT DESIGNER FILE NAME FILE DATE NO SHEETS
R33 DUAL-BAND JOE 2K3D8L1A 18-10-96 2



1A	UPDATE INCLUDES MERGE OF TCXO & IF BOARDS	J.F.				24/5/91
PROTO-1	UPDATED FROM P1	J.F.				20/9/90
REV/ISS	AMENDMENTS	DRAWN	CHKD	D.O.	APVD	DATE

© TAIT ELECTRONICS					
T2000-300 VHF MOBILE RADIO PROGRAMMABLE					
IPN:	220-01314-01	ISSUE:	A	2.S.C.	2
PROJECT:	2K3 DUAL-BAND	DESIGNER:	JOE	FILE NAME:	2K3DBL1A
				FILE DATE:	18-10-96
				NO. SHEETS:	2