

7.2 T2000-200 RF PCB

T2000-200 Parts List (IPN 220-01202-10)

Parts List Amendments	

Ref	Var	IPN	Description	Ref	Var	IPN	Description
2*6WAY		240-00020-51	PLUG 12 WAY 2*6 FLAT CABLE TERMN	C197		015-06100-08	CAP CER 1206 CHIP 100N 10% X7R 50V
C1		015-24100-08	CAP CER 0805 CHIP 1N 10% X7R 50V	C198		015-23220-01	CAP CER 0805 CHIP 220P 5% NPO 50V
C2		015-24100-08	CAP CER 0805 CHIP 1N 10% X7R 50V	C199		015-24100-08	CAP CER 0805 CHIP 1N 10% X7R 50V
C3		015-24100-08	CAP CER 0805 CHIP 1N 10% X7R 50V	C200		015-25100-08	CAP CER 0805 CHIP 10N 10% X7R 50V
C100		015-25100-08	CAP CER 0805 CHIP 10N 10% X7R 50V	C201		015-24100-08	CAP CER 0805 CHIP 1N 10% X7R 50V
C101		015-22560-01	CAP CER 0805 CHIP 56P 5% NPO 50V	C202		020-58470-05	CAP ELECT AI RDL 47M 16V 6.3X7MM
C102		015-23180-01	CAP CER 0805 CHIP 180P 5% NPO 50V	C203		020-57470-10	CAP ELECT AI RDL 4U7 50V LO ESR
C103		015-25100-08	CAP CER 0805 CHIP 10N 10% X7R 50V	C205		015-24100-08	CAP CER 0805 CHIP 1N 10% X7R 50V
C104		015-06100-08	CAP CER 1206 CHIP 100N 10% X7R 50V	C206		015-06100-08	CAP CER 1206 CHIP 100N 10% X7R 50V
C105		015-22100-01	CAP CER 0805 CHIP 10P +/-0.5P NPO 50V	C207		015-25100-08	CAP CER 0805 CHIP 10N 10% X7R 50V
C106		015-24100-08	CAP CER 0805 CHIP 1N 10% X7R 50V	C213		020-58470-05	CAP ELECT AI RDL 47M 16V 6.3X7MM
C107		015-23100-01	CAP CER 0805 CHIP 100P 5% NPO 50V	C214		015-24100-08	CAP CER 0805 CHIP 1N 10% X7R 50V
C108		015-24100-08	CAP CER 0805 CHIP 1N 10% X7R 50V	C215		020-57470-10	CAP ELECT AI RDL 4U7 50V LO ESR
C109		015-22270-01	CAP CER 0805 CHIP 27P 5% NPO 50V	C216		015-25100-08	CAP CER 0805 CHIP 10N 10% X7R 50V
C110		015-23270-01	CAP CER 0805 CHIP 270P 5% NPO 50V	C217		020-58470-05	CAP ELECT AI RDL 47M 16V 6.3X7MM
C111		015-24100-08	CAP CER 0805 CHIP 1N 10% X7R 50V	C218		020-57470-10	CAP ELECT AI RDL 4U7 50V LO ESR
C112		015-22330-01	CAP CER 0805 CHIP 33P 5% NPO 50V	C219		020-58470-05	CAP ELECT AI RDL 47M 16V 6.3X7MM
C113		015-23270-01	CAP CER 0805 CHIP 270P 5% NPO 50V	C220		022-55150-10	CAP MYLAR AI 15N 5% 63V POTTED
C114		015-24100-08	CAP CER 0805 CHIP 1N 10% X7R 50V	C221		022-57100-02	CAP MYLAR AI 1M 20% 50V POTTED
C115		015-22270-01	CAP CER 0805 CHIP 27P 5% NPO 50V	C222		022-06100-15	CAP MET POLYSTR 100N 5% 50V 5.6MM HI
C116		015-24100-08	CAP CER 0805 CHIP 1N 10% X7R 50V	C223		015-24100-08	CAP CER 0805 CHIP 1N 10% X7R 50V
C121		015-23100-01	CAP CER 0805 CHIP 100P 5% NPO 50V	C224		015-24100-08	CAP CER 0805 CHIP 1N 10% X7R 50V
C122		015-24100-08	CAP CER 0805 CHIP 1N 10% X7R 50V	C225		015-24100-08	CAP CER 0805 CHIP 1N 10% X7R 50V
C123		015-25100-08	CAP CER 0805 CHIP 10N 10% X7R 50V	C226		015-21180-01	CAP CER 0805 CHIP 1P8 +/-0.25 NPO 50V
C124		015-22220-01	CAP CER 0805 CHIP 22P 5% NPO 50V	C227		015-24100-08	CAP CER 0805 CHIP 1N 10% X7R 50V
C125		015-22120-01	CAP CER 0805 CHIP 12P 5% NPO 50V	C228		015-24100-08	CAP CER 0805 CHIP 1N 10% X7R 50V
C126		015-22220-01	CAP CER 0805 CHIP 22P 5% NPO 50V	C229		020-58470-05	CAP ELECT AI RDL 47M 16V 6.3X7MM
C127		015-22390-01	CAP CER 0805 CHIP 39P 5% NPO 50V	C230		015-25100-08	CAP CER 0805 CHIP 10N 10% X7R 50V
C128		015-25100-08	CAP CER 0805 CHIP 10N 10% X7R 50V	C231		015-21470-01	CAP CER 0805 CHIP 4P7 +/-0.25P NPO 50V
C129		015-25100-08	CAP CER 0805 CHIP 10N 10% X7R 50V	C232		015-22150-01	CAP CER 0805 CHIP 15P 5% NPO 50V
C130		015-25100-08	CAP CER 0805 CHIP 10N 10% X7R 50V	C234		020-57470-10	CAP ELECT AI RDL 4U7 50V LO ESR
C134		015-22390-01	CAP CER 0805 CHIP 39P 5% NPO 50V	C239		015-25100-08	CAP CER 0805 CHIP 10N 10% X7R 50V
C135		015-23180-01	CAP CER 0805 CHIP 180P 5% NPO 50V	C240		015-24100-08	CAP CER 0805 CHIP 1N 10% X7R 50V
C136		015-21560-01	CAP CER 0805 CHIP 5P6 +/-0.25P NPO 50V	C241		015-25100-08	CAP CER 0805 CHIP 10N 10% X7R 50V
C137		015-23180-01	CAP CER 0805 CHIP 180P 5% NPO 50V	C243		015-24100-08	CAP CER 0805 CHIP 1N 10% X7R 50V
C138		015-25100-08	CAP CER 0805 CHIP 10N 10% X7R 50V	C245		015-22180-01	CAP CER 0805 CHIP 18P 5% NPO 50V
C140		015-25100-08	CAP CER 0805 CHIP 10N 10% X7R 50V	C246		015-25100-08	CAP CER 0805 CHIP 10N 10% X7R 50V
C141		015-22390-01	CAP CER 0805 CHIP 39P 5% NPO 50V	C248		015-25100-08	CAP CER 0805 CHIP 10N 10% X7R 50V
C142		015-25100-08	CAP CER 0805 CHIP 10N 10% X7R 50V	C257		015-22180-01	CAP CER 0805 CHIP 18P 5% NPO 50V
C145		015-23100-01	CAP CER 0805 CHIP 100P 5% NPO 50V	C300		020-07470-04	CAP ELECT RADL 4M7 25V 20% 8X13MM SOLID
C146		015-23270-01	CAP CER 0805 CHIP 270P 5% NPO 50V	C301		015-24100-08	CAP CER 0805 CHIP 1N 10% X7R 50V
C147		015-25100-08	CAP CER 0805 CHIP 10N 10% X7R 50V	C302		015-22270-01	CAP CER 0805 CHIP 27P 5% NPO 50V
C148		015-22470-01	CAP CER 0805 CHIP 47P 5% NPO 50V	C303		015-06100-08	CAP CER 1206 CHIP 100N 10% X7R 50V
C149		015-25100-08	CAP CER 0805 CHIP 10N 10% X7R 50V	C304		015-24100-08	CAP CER 0805 CHIP 1N 10% X7R 50V
C150		015-23100-01	CAP CER 0805 CHIP 100P 5% NPO 50V	C305		015-23120-01	CAP CER 0805 CHIP 120P 5% NPO 50V
C151		015-06100-08	CAP CER 1206 CHIP 100N 10% X7R 50V	C306		015-23120-01	CAP CER 0805 CHIP 120P 5% NPO 50V
C152		015-23100-01	CAP CER 0805 CHIP 100P 5% NPO 50V	C307		015-06100-08	CAP CER 1206 CHIP 100N 10% X7R 50V
C152A		015-25100-08	CAP CER 0805 CHIP 10N 10% X7R 50V	C308		015-06100-08	CAP CER 1206 CHIP 100N 10% X7R 50V
C153		020-57470-10	CAP ELECT AI RDL 4U7 50V LO ESR	C309		015-24100-08	CAP CER 0805 CHIP 1N 10% X7R 50V
C153A		015-23100-01	CAP CER 0805 CHIP 100P 5% NPO 50V	C310		015-24470-08	CAP CER 0805 CHIP 4N7 10% X7R 50V
C154		015-25100-08	CAP CER 0805 CHIP 10N 10% X7R 50V	C311		015-22470-01	CAP CER 0805 CHIP 47P 5% NPO 50V
C155		015-23100-01	CAP CER 0805 CHIP 100P 5% NPO 50V	C312		015-23120-01	CAP CER 0805 CHIP 120P 5% NPO 50V
C156		036-10000-00	RES M/F 0805 CHIP ZERO OHM	C313		015-23680-08	CAP CER 0805 CHIP 680P 10% X7R 50V
C157		015-06100-08	CAP CER 1206 CHIP 100N 10% X7R 50V	C315		015-24100-08	CAP CER 0805 CHIP 1N 10% X7R 50V
C158		015-25100-08	CAP CER 0805 CHIP 10N 10% X7R 50V	C316		015-24100-08	CAP CER 0805 CHIP 1N 10% X7R 50V
C174		020-58470-05	CAP ELECT AI RDL 47M 16V 6.3X7MM	C317		015-24100-08	CAP CER 0805 CHIP 1N 10% X7R 50V
C175		015-06100-08	CAP CER 1206 CHIP 100N 10% X7R 50V	C318		015-24100-08	CAP CER 0805 CHIP 1N 10% X7R 50V
C176		015-06100-08	CAP CER 1206 CHIP 100N 10% X7R 50V	C319		015-06100-08	CAP CER 1206 CHIP 100N 10% X7R 50V
C179		015-25100-08	CAP CER 0805 CHIP 10N 10% X7R 50V	C320		015-24100-08	CAP CER 0805 CHIP 1N 10% X7R 50V
C180		015-05470-08	CAP CER 1206 CHIP 47N 10% X7R 50V	C321		015-06100-08	CAP CER 1206 CHIP 100N 10% X7R 50V
C181		015-05470-08	CAP CER 1206 CHIP 47N 10% X7R 50V	C322		015-22470-01	CAP CER 0805 CHIP 47P 5% NPO 50V
C185		015-25100-08	CAP CER 0805 CHIP 10N 10% X7R 50V	C323		015-03270-06	CAP CER 1210 CHIP 270P NPO 500V GRM42
C186		015-25100-08	CAP CER 0805 CHIP 10N 10% X7R 50V	C325		015-03680-03	CAP CER CHIP 680P 5% NPO 100V HIQ GRH 111
C187		015-24100-08	CAP CER 0805 CHIP 1N 10% X7R 50V	C326		011-05470-02	CAP CER 47N T/C FZ 63V
C188		015-23100-01	CAP CER 0805 CHIP 100P 5% NPO 50V	C327		015-03680-06	CAP CER 1210 CHIP 680P NPO 200V GRM42
*C189		015-23470-08	CAP CER 0805 CHIP 470P 10% X7R 50V	C328		015-24100-08	CAP CER 0805 CHIP 1N 10% X7R 50V
*C190		015-23470-08	CAP CER 0805 CHIP 470P 10% X7R 50V	C329		015-03150-06	CAP CER 1210 CHIP 150P NPO 500V GRM42-2
C191		015-24100-08	CAP CER 0805 CHIP 1N 10% X7R 50V	C330		015-03120-06	CAP CER 1210 CHIP 120P NPO 500V GRM42-2
C192		015-22330-01	CAP CER 0805 CHIP 33P 5% NPO 50V	C333		015-02560-06	CAP CER 1210 CHIP 56P NPO 500V GRM42-2
C193		020-57470-10	CAP ELECT AI RDL 4U7 50V LO ESR	C334		015-02390-06	CAP CER 1210 CHIP 39P NPO 500V GRM42-2
C194		015-24100-08	CAP CER 0805 CHIP 1N 10% X7R 50V	C336		015-02680-06	CAP CER 1210 CHIP 68P NPO 500V GRM42-2
C195		015-24100-08	CAP CER 0805 CHIP 1N 10% X7R 50V	C337		015-24100-08	CAP CER 0805 CHIP 1N 10% X7R 50V
				C338		015-02220-06	CAP CER 1210 CHIP 22P 5% NPO 500V GRM42

Ref	Var	IPN	Description	Ref	Var	IPN	Description
R132		036-13150-00	RES M/F 0805 CHIP 150E 5%	R302		036-14100-00	RES M/F 0805 CHIP 1K 5%
R134		036-12100-00	RES M/F 0805 CHIP 10E 5%	R303		036-14100-00	RES M/F 0805 CHIP 1K 5%
R136		036-11470-00	RES M/F 0805 CHIP 4E7 10%	R304		036-12470-00	RES M/F 0805 CHIP 47E 5%
R137		036-11470-00	RES M/F 0805 CHIP 4E7 10%	R305		036-12100-00	RES M/F 0805 CHIP 10E 5%
R138		036-16100-00	RES M/F 0805 CHIP 100K 5%	R306		036-12100-00	RES M/F 0805 CHIP 10E 5%
R140		036-15680-00	RES M/F 0805 CHIP 68K 5%	R307		030-53470-20	RES FILM AI 470E 5% 0.4W 4X1.6MM
R140A		036-15330-00	RES M/F 0805 CHIP 33K 5%	R308		036-12100-00	RES M/F 0805 CHIP 10E 5%
R141		036-14150-00	RES M/F 0805 CHIP 1K5 5%	R308A		036-12100-00	RES M/F 0805 CHIP 10E 5%
R142		036-15270-00	RES M/F 0805 CHIP 27K 5%	R309		036-12100-00	RES M/F 0805 CHIP 10E 5%
R142A		036-16100-00	RES M/F 0805 CHIP 100K 5%	R310		036-12100-00	RES M/F 0805 CHIP 10E 5%
R143		036-15330-00	RES M/F 0805 CHIP 33K 5%	R311		036-13820-00	RES M/F 0805 CHIP 820E 5%
R143A		036-15330-00	RES M/F 0805 CHIP 33K 5%	R312		036-13680-00	RES M/F 0805 CHIP 680E 5%
R144		036-15680-00	RES M/F 0805 CHIP 68K 5%	R313		030-03180-00	RES FILM 180E 5% 0.25W 7X2.5MM
R144A		036-16120-00	RES M/F 0805 CHIP 120K 5%	R314		036-12100-00	RES M/F 0805 CHIP 10E 5%
R145		036-14150-00	RES M/F 0805 CHIP 1K5 5%	R315		036-12180-00	RES M/F 0805 CHIP 18E 5%
R145A		036-15330-00	RES M/F 0805 CHIP 33K 5%	R316		032-32220-00	RES M/F PWR 22E 5% 1W 12X4.5MM
R146		036-12220-00	RES M/F 0805 CHIP 22E 5%	R317		030-01100-00	RES FILM 1E 5% 0.25W 7X2.5MM
R147		036-13220-00	RES M/F 0805 CHIP 220E 5%	R317A		030-01100-00	RES FILM 1E 5% 0.25W 7X2.5MM
R148		036-13560-00	RES M/F 0805 CHIP 560E 5%	R317B		030-01100-00	RES FILM 1E 5% 0.25W 7X2.5MM
R150		036-16100-00	RES M/F 0805 CHIP 100K 5%	R317C		030-01100-00	RES FILM 1E 5% 0.25W 7X2.5MM
*R151		036-14330-00	RES M/F 0805 CHIP 3K3 5%	R318		032-33180-00	RES M/F PWR 180E 5% 1W 12X4.5MM
*R152		036-16390-00	RES M/F 0805 CHIP 390K 5%	R319		032-33120-00	RES M/F PWR 120E 5% 12*4 2W
R153		036-14100-00	RES M/F 0805 CHIP 1K 5%	R320		030-55150-20	RES FILM AI 15K 5% 0.4W 4X1.6MM
RV153		042-05470-07	RES PRESET 47K CARBON 6MM FLAT DUAL ADJ	R321		030-53390-20	RES FILM AI 390E 5% 0.4W 4X1.6MM
R155		036-16100-00	RES M/F 0805 CHIP 100K 5%	R321A		030-53390-20	RES FILM AI 390E 5% 0.4W 4X1.6MM
R156		036-13100-00	RES M/F 0805 CHIP 100E 5%	R322		036-12100-00	RES M/F 0805 CHIP 10E 5%
R157		036-15100-00	RES M/F 0805 CHIP 10K 5%	R323		030-52100-20	RES FILM AI 10E 5% 0.4W 4X1.6MM
R158		036-14100-00	RES M/F 0805 CHIP 1K 5%	RV324		042-06470-06	RES PRESET 470/500K 25% 6MM ROUND TOP A
R159		036-12470-00	RES M/F 0805 CHIP 47E 5%	R325		030-02100-00	RES FILM 10E 5% 0.25W 7X2.5MM
R160		036-12100-00	RES M/F 0805 CHIP 10E 5%	R326		036-16220-00	RES M/F 0805 CHIP 220K 5%
R161		036-14100-00	RES M/F 0805 CHIP 1K 5%	R327		036-14100-00	RES M/F 0805 CHIP 1K 5%
*R162		036-10000-00	RES M/F 0805 CHIP ZERO OHM	R328		030-53150-20	RES FILM AI 150E 5% 0.4W 4X1.6MM
*R163		036-10000-00	RES M/F 0805 CHIP ZERO OHM	R329		036-15470-00	RES M/F 0805 CHIP 47K 5%
*R194		036-10000-00	RES M/F 0805 CHIP ZERO OHM	R330		036-16220-00	RES M/F 0805 CHIP 220K 5%
R195		036-15680-00	RES M/F 0805 CHIP 68K 5%	R332		036-13100-00	RES M/F 0805 CHIP 100E 5%
R196		036-13100-00	RES M/F 0805 CHIP 100E 5%	R333		036-14220-00	RES M/F 0805 CHIP 2K2 5%
R197		036-13100-00	RES M/F 0805 CHIP 100E 5%	R334		036-15560-00	RES M/F 0805 CHIP 56K 5%
R198		036-14220-00	RES M/F 0805 CHIP 2K2 5%	R335		036-15100-00	RES M/F 0805 CHIP 10K 5%
R199		036-13100-00	RES M/F 0805 CHIP 100E 5%	R336		036-13220-00	RES M/F 0805 CHIP 220E 5%
R213		036-14390-00	RES M/F 0805 CHIP 3K9 5%	R337		036-10000-00	RES M/F 0805 CHIP ZERO OHM
R214		036-14180-00	RES M/F 0805 CHIP 1K8 5%	R338		036-13680-00	RES M/F 0805 CHIP 680E 5%
R215		036-14390-00	RES M/F 0805 CHIP 3K9 5%	R339		036-16270-00	RES M/F 0805 CHIP 270K 5%
R216		036-12470-00	RES M/F 0805 CHIP 47E 5%	R340		036-16220-00	RES M/F 0805 CHIP 220K 5%
R217		036-12470-00	RES M/F 0805 CHIP 47E 5%	R341		036-13220-00	RES M/F 0805 CHIP 220E 5%
RV222		042-05470-07	RES PRESET 47K CARBON 6MM FLAT DUAL ADJ	R342		036-14180-00	RES M/F 0805 CHIP 1K8 5%
R223		036-15220-00	RES M/F 0805 CHIP 22K 5%	R350		030-02100-00	RES FILM 10E 5% 0.25W 7X2.5MM
R224		036-14820-00	RES M/F 0805 CHIP 8K2 5%	R418		036-13680-00	RES M/F 0805 CHIP 680E 5%
R225		036-15220-00	RES M/F 0805 CHIP 22K 5%	R420		036-15390-00	RES M/F 0805 CHIP 39K 5%
R226		036-14820-00	RES M/F 0805 CHIP 8K2 5%	R420A		036-14330-00	RES M/F 0805 CHIP 3K3 5%
R227		036-14820-00	RES M/F 0805 CHIP 8K2 5%	R421		036-15390-00	RES M/F 0805 CHIP 39K 5%
R228		036-14330-00	RES M/F 0805 CHIP 3K3 5%	R421A		036-14330-00	RES M/F 0805 CHIP 3K3 5%
R229		036-12220-00	RES M/F 0805 CHIP 22E 5%	R422		036-12220-00	RES M/F 0805 CHIP 22E 5%
R230		036-13390-00	RES M/F 0805 CHIP 390E 5%	R425		036-14100-00	RES M/F 0805 CHIP 1K 5%
R231		036-13180-00	RES M/F 0805 CHIP 180E 5%	R426		036-11470-00	RES M/F 0805 CHIP 4E7 10%
R232		036-14220-00	RES M/F 0805 CHIP 2K2 5%	R427		036-11470-00	RES M/F 0805 CHIP 4E7 10%
R233		036-13680-00	RES M/F 0805 CHIP 680E 5%	R428		036-12220-00	RES M/F 0805 CHIP 22E 5%
R234		036-13270-00	RES M/F 0805 CHIP 270E 5%	R429		036-15270-00	RES M/F 0805 CHIP 27K 5%
R235		036-13330-00	RES M/F 0805 CHIP 330E 5%	R430		036-14680-00	RES M/F 0805 CHIP 6K8 5%
R236		036-12470-00	RES M/F 0805 CHIP 47E 5%	R431		036-16100-00	RES M/F 0805 CHIP 100K 5%
R237		036-13100-00	RES M/F 0805 CHIP 100E 5%	R432		036-12100-00	RES M/F 0805 CHIP 10E 5%
R238		036-14820-00	RES M/F 0805 CHIP 8K2 5%	R433		036-13100-00	RES M/F 0805 CHIP 100E 5%
R239		036-15220-00	RES M/F 0805 CHIP 22K 5%	R434		036-12470-00	RES M/F 0805 CHIP 47E 5%
R240		036-16100-00	RES M/F 0805 CHIP 100K 5%	R437		036-14100-00	RES M/F 0805 CHIP 1K 5%
R241		036-14180-00	RES M/F 0805 CHIP 1K8 5%				
R242		036-12220-00	RES M/F 0805 CHIP 22E 5%				
R243		036-14220-00	RES M/F 0805 CHIP 2K2 5%				
R244		036-12220-00	RES M/F 0805 CHIP 22E 5%				
R245		036-12220-00	RES M/F 0805 CHIP 22E 5%				
R246		036-13100-00	RES M/F 0805 CHIP 100E 5%				
R247		036-12470-00	RES M/F 0805 CHIP 47E 5%				
R248		036-16100-00	RES M/F 0805 CHIP 100K 5%				
R249		036-12100-00	RES M/F 0805 CHIP 10E 5%				
R250		036-14220-00	RES M/F 0805 CHIP 2K2 5%				
R251		036-13150-00	RES M/F 0805 CHIP 150E 5%				
R252		036-14120-00	RES M/F 0805 CHIP 1K2 5%				
R253		036-13680-00	RES M/F 0805 CHIP 680E 5%				
R254		036-12220-00	RES M/F 0805 CHIP 22E 5%				
R255		036-12100-00	RES M/F 0805 CHIP 10E 5%				
R256		036-14180-00	RES M/F 0805 CHIP 1K8 5%				
R257		036-12100-00	RES M/F 0805 CHIP 10E 5%				
R259		036-13270-00	RES M/F 0805 CHIP 270E 5%				
R260		036-12270-00	RES M/F 0805 CHIP 27E 5%				
R261		036-12100-00	RES M/F 0805 CHIP 10E 5%				
R269		036-12100-00	RES M/F 0805 CHIP 10E 5%				
R270		036-12100-00	RES M/F 0805 CHIP 10E 5%				
R271		036-13180-00	RES M/F 0805 CHIP 180E 5%				
R272		036-13180-00	RES M/F 0805 CHIP 180E 5%				
R273		036-12100-00	RES M/F 0805 CHIP 10E 5%				
R274		036-14390-00	RES M/F 0805 CHIP 3K9 5%				
R275		036-12100-00	RES M/F 0805 CHIP 10E 5%				
R278		036-16100-00	RES M/F 0805 CHIP 100K 5%				
R284		036-15100-00	RES M/F 0805 CHIP 10K 5%				
R285		036-15390-00	RES M/F 0805 CHIP 39K 5%				
R286		036-15150-00	RES M/F 0805 CHIP 15K 5%				
R287		036-15820-00	RES M/F 0805 CHIP 82K 5%				
R288		036-16120-00	RES M/F 0805 CHIP 120K 5%				
R300		030-52680-20	RES FILM AI 68E 5% 0.4W 4X1.6MM				
R301		036-13330-00	RES M/F 0805 CHIP 330E 5%				

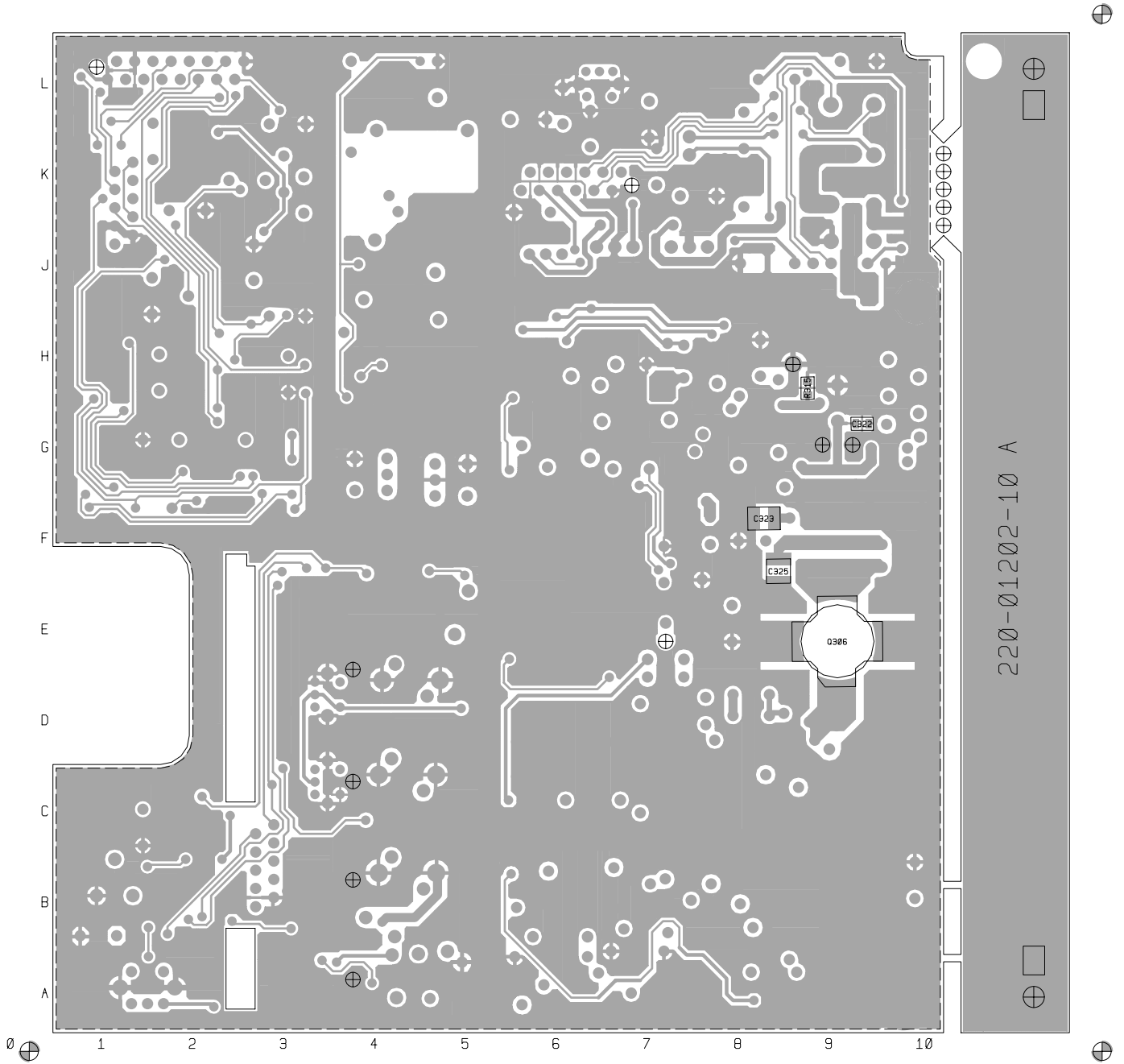
T2000-200 Mechanical & Miscellaneous Parts

IPN	Description	IPN	Description
065-00010-11	BEAD FERRITE 4S3 3*1*4MM RED L1, L300, L300A, L308, L308A, L309, L309A		
200-00010-05	WIRE T/C 0.5MM L315A, L317A, L324A		
205-00010-12	CABLE FLAT RBBN 16 CORE 16/7/0.1 GREY		
220-01202-10	PCB T2200 RF 66-88MHZ C732		
240-00020-54	PLUG 16 WAY 2X8 FLAT CABLE TERMN MICROMATCH		
240-02100-11	SKT COAX BNC 3.5MM PNL NO EARTH TAG		
303-23135-01	COVER BTTM A1M2505 T2000 PNTD CMLPT		
303-50070-00	CLIP A4M2648 XSTR MTG T2000PA/T555'S		
303-50076-00	CLIP A4M2524 HSINK T2000 RF PRE-DRIVER TO-39		
303-50077-00	CLIP A3M2525 T2000 AUDIO IC AND REG		
308-13103-01	CHASSIS A1M2503 D-CAST T2000 PNTD CMLPT		
316-85094-00	PLATE A4M2160 BNC MTG UK 5X5 SERIES		
319-01164-01	SHIELD A1M2507 DIE CAST T2000 MICROP		
319-01167-00	SHIELD RX A3M2594 T2000		
349-00020-30	SCREW TAPTITE M3X6MM PAN POZI BZ		
349-00020-31	SCREW TAPTITE M3X10MM PAN POZI BZ		
349-00020-32	SCREW TAPTITE M3X8MM PAN POZI BZ		
349-00020-34	SCREW M3*12 PAN POZI TAPTITE BZ		
349-00020-48	SCREW M4X25MM PAN POZI TAPTITE II BRIGHT ZINC		
349-00020-49	SCREW TAPTITE M4X35MM PAN POZI BZ		
352-00010-35	NUT 8-32 UNC HEX RF PWR XSTR MTG NUT FOR Q306		
360-01053-01	PLUG A3M2563 PLASTIC D-RANGE BLANKING		
362-01027-01	GASKET A4M2564 RUBBER SEAL T2000 MAIN CONN		
362-01028-00	GASKET A4M2652 130X3MM CONDUCT STRIPS T2000		
362-01058-00	GASKET TO-126 11.1X7.9 D2.4 SIL INSULATION		

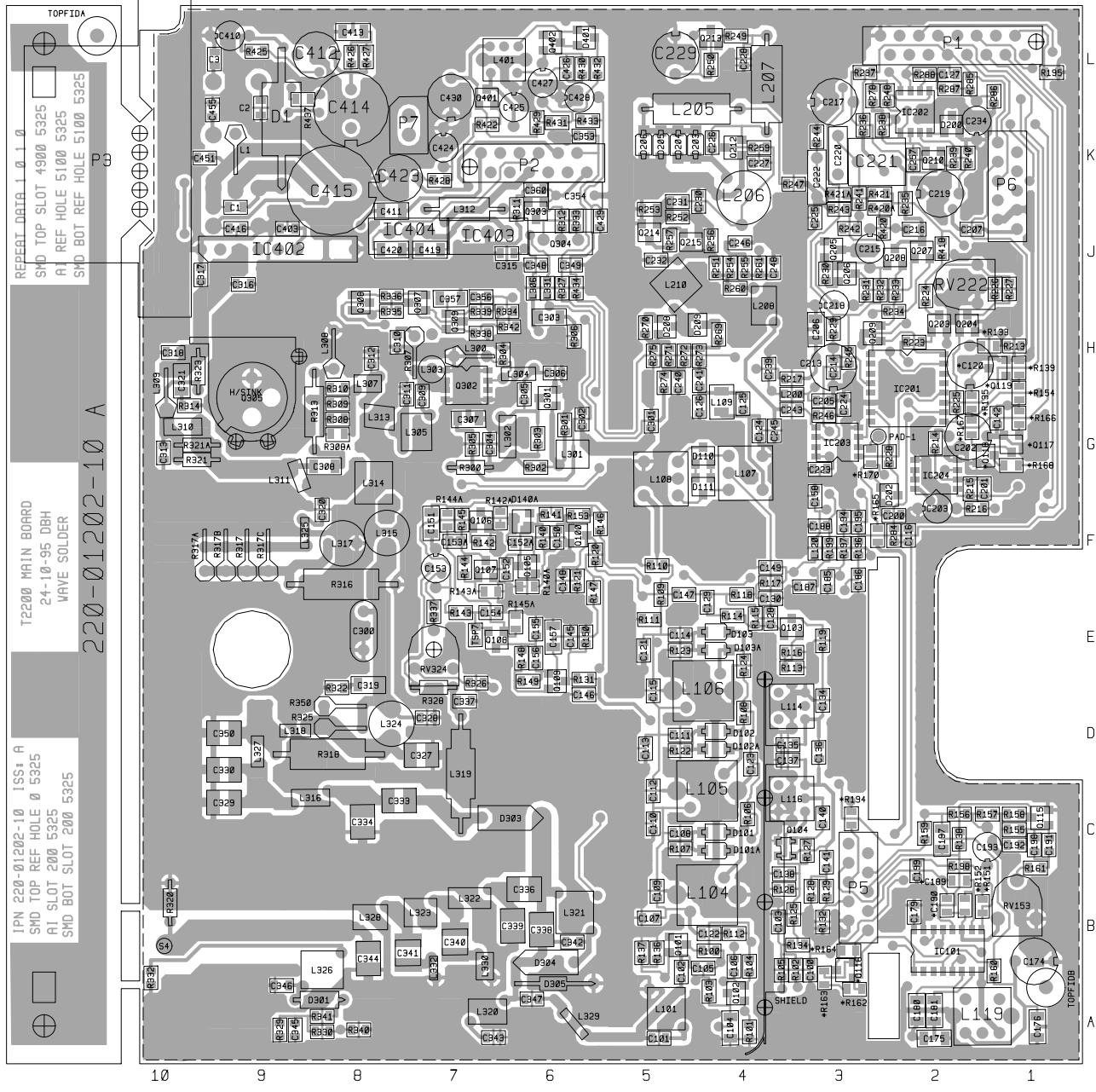
T2000-200 Grid Reference Index (IPN 220-01202-10)

Device	PCB	Circuit	Device	PCB	Circuit	Device	PCB	Circuit	Device	PCB	Circuit
1	1:J9	1-V9	C198	1:C1	1-M6	C340	1:B7	1-U0			1-J4
C2	1:K9	1-V8	C199	1:C2	1-M7	C341	1:B8	1-U0	IC203	1:G3	1-E2
C3	1:L10	1-V8	C200	1:F2	1-B5	C342	1:B6	1-T0	IC204	1:G2	3
C100	1:A3	1-U3	C201	1:F2	1-D7	C343	1:A7	1-T0			1-D7
C101	1:A5	1-T1	C202	1:G2	1-D6	C344	1:B8	1-V0			1-H9
C102	1:A5	1-S2	C203	1:F2	1-E7	C345	1:A9	1-U1	IC402	1:J9	1-T8
C103	1:B4	1-U3	C205	1:G3	1-B2	C346	1:A9	1-V1	IC403	1:J7	1-K9
C104	1:A4	1-T3	C206	1:H3	1-H5	C347	1:A6	1-S1	IC404	1:J8	1-K8
C105	1:B4	1-S3	C207	1:J2	1-B7	C348	1:J6	1-V2			
C106	1:B4	1-S3	C213	1:H3	1-D4	C349	1:J6	1-V2	L1	1:K9	1-U9
C107	1:B5	1-Q2	C214	1:H3	1-C4	C350	1:D9	1-Q0	L101	1:A5	1-T1
C108	1:C5	1-P3	C215	1:J3	1-E4	C353	1:K6	1-V2	L104	1:B4	1-Q3
C109	1:B5	1-Q2	C216	1:J2	1-E5	C354	1:K6	1-U2	L105	1:C4	1-P3
C110	1:C5	1-P2	C217	1:K3	1-F4	C356	1:H7	1-K1	L106	1:D4	1-O3
C111	1:D5	1-O3	C218	1:H3	1-F5	C357	1:H7	1-L1	L107	1:G4	1-J3
C112	1:C5	1-P2	C219	1:K2	1-G4	C360	1:K6	1-I1	L108	1:G5	1-L3
C113	1:D5	1-O2	C220	1:K3	1-G5	C403	1:J9	1-S8	L109	1:G4	1-I3
C114	1:E5	1-N3	C221	1:K2	1-G5	C410	1:L9	1-S9	L114	1:D4	1-P5
C115	1:D5	1-N2	C222	1:K3	1-H3	C411	1:J8	1-T8	L116	1:C4	1-Q5
C116	1:F2	1-N3	C223	1:G3	1-E3	C412	1:L8	1-T9	L119	1:A2	1-K8
*C120	1:H2	1-F8	C224	1:G3	1-E2	C413	1:L8	1-U8	L120	1:F3	1-L4
C121	1:E5	1-N2	C225	1:J3	1-H3	C414	1:K8	1-U9	L200	1:G4	1-B2
C122	1:B4	1-R3	C226	1:K4	1-C1	C415	1:K8	1-U9	L205	1:K5	1-A1
C123	1:D4	1-J3	C227	1:K4	1-C0	C416	1:J9	1-U8	L206	1:K4	1-B0
C124	1:G4	1-I2	C228	1:L4	1-D1	C419	1:J7	1-K8	L207	1:K4	1-C1
C125	1:G4	1-I3	C229	1:L5	1-C1	C420	1:J8	1-L8	L208	1:H4	1-E2
C126	1:G4	1-H2	C230	1:J4	1-D0	C423	1:K8	1-L9	L210	1:H5	1-E1
C127	1:L2	1-J4	C231	1:J5	1-D0	C424	1:K7	1-M9	L300	1:H7	1-I0
C128	1:E4	1-K4	C232	1:J5	1-E0	C425	1:K6	1-O8	L301	1:G6	1-G0
C129	1:E4	1-M5	C234	1:K2	1-J3	C426	1:L6	1-P9	L302	1:G7	1-H0
C130	1:E4	1-M5	C239	1:H4	1-B2	C427	1:L6	1-Q8	L303	1:H7	1-J1
C134	1:D3	1-O6	C240	1:H5	1-F0	C428	1:L6	1-R8	L304	1:H7	1-H0
C135	1:D4	1-P5	C241	1:H4	1-G3	C429	1:J6	1-Q8	L305	1:G8	1-J0
C136	1:D3	1-P6	C243	1:G4	1-E2	C430	1:L7	1-N9	L306	1:J6	1-J1
C137	1:D4	1-Q5	C245	1:G4	1-E2	C451	1:K10	1-V8	L307	1:H8	1-K0
C138	1:B4	1-Q5	C246	1:J4	1-D2	C455	1:K10	1-V8	L308	1:H8	1-L0
C140	1:C3	1-T5	C248	1:J4	1-D2				L309	1:G10	1-M1
C141	1:C3	1-S6	C257	1:K2	1-F4	D1	1:K9	1-V9	L310	1:G10	1-M1
C142	1:G1	1-H6	C300	1:E8	1-N1	D101	1:C4	1-Q3	L311	1:G9	1-N0
C145	1:E6	1-T4	C301	1:G5	1-F0	D101A	1:C4	1-Q3	L312	1:J7	1-J2
C146	1:D6	1-U4	C302	1:G6	1-G0	D102	1:D4	1-P3	L313	1:G8	1-K0
C147	1:E5	1-N5	C303	1:H6	1-J1	D102A	1:D4	1-P3	L314	1:G8	1-N1
C148	1:F6	1-O4	C304	1:G7	1-G1	D103	1:E4	1-N3	L315	1:F8	1-N1
C149	1:F4	1-L4	C305	1:G6	1-H0	D103A	1:E4	1-N3	L316	1:C8	1-R1
C150	1:F6	1-O4	C306	1:H6	1-H0	D110	1:G4	1-K3	L317	1:F8	1-P0
C151	1:F7	1-O5	C307	1:G7	1-H1			1-K3	L318	1:D9	1-Q1
C152	1:F6	1-Q4	C308	1:G8	1-M0	D111	1:G4	1-K3	L319	1:C7	1-S1
C152A	1:F6	1-P4	C309	1:G7	1-J0			1-K2	L320	1:A7	1-T0
C153	1:F7	1-Q4	C310	1:H8	1-K1	D140A	1:F6	1-Q4	L321	1:B6	1-T1
C153A	1:F7	1-R4	C311	1:G8	1-K0	D200	1:K2	1-H4	L322	1:B7	1-U1
C154	1:E7	1-S4	C312	1:H8	1-K0			1-H4	L323	1:B8	1-U1
C155	1:E6	1-T4	C313	1:G10	1-M1	D202	1:F3	1-C5	L324	1:D8	1-P1
C156	1:E6	1-T4	C315	1:J6	1-J1	D203	1:K5	1-A0	L325	1:F9	1-N0
C157	1:E6	1-U5	C316	1:J9	1-N2	D204	1:K5	1-B0	L326	1:B8	1-V1
C158	1:F3	1-K4	C317	1:J10	1-N2	D205	1:K5	1-A0	L327	1:D9	1-Q1
C174	1:B1	1-J8	C318	1:H10	1-N2	D206	1:K5	1-B0	L328	1:B8	1-U1
C175	1:A2	1-J8	C319	1:D8	1-O1	D208	1:H5	1-E0	L329	1:A6	1-S1
C176	1:A1	1-K8	C320	1:F8	1-N0	D209	1:H5	1-E1	L330	1:A7	1-U0
C179	1:B2	1-M7	C321	1:H10	1-M2	D301	1:A8	1-V1	L331	1:J6	1-T2
C180	1:A2	1-L8	C322	2:G9	1-M0	D303	1:C7	1-S1	L332	1:A7	1-U0
C181	1:A2	1-L8	C323	2:F8	1-N0	D304	1:B6	1-T0	L401	1:L7	1-O9
C185	1:F3	1-I6	C325	2:F8	1-O0	D305	1:A6	1-S0			
C186	1:F3	1-J6	C326	1:P1	1-P1	D401	1:L6	1-P9	P1	1:L1	
C187	1:E3	1-M8	C327	1:D7	1-Q1			1-P9	PAD-1	1:G3	1-G6
C188	1:F3	1-A6	C328	1:D7	1-O1				P2	1:K7	
*C189	1:B2	1-K6	C329	1:C9	1-Q0	H/SINK	1:G9		P3	1:L10	
*C190	1:B2	1-K7	C330	1:D9	1-R0				P5	1:B3	
C191	1:C1	1-M6	C333	1:C8	1-S1	IC101	1:B2	1-K6	P6	1:J1	
C192	1:C1	1-M7	C334	1:C8	1-R0			1-L7	P7	1:K8	
C193	1:C1	1-N7	C336	1:B6	1-T1			1-O6			
C194	1:F3	1-A7	C337	1:D7	1-R1	IC201	1:H2	1-B4	Q100	1:F6	1-O4
C195	1:F3	1-A7	C338	1:B6	1-S1	IC202	1:K2		Q101	1:B5	1-R3
C197	1:C2	1-O7	C339	1:B6	1-T0			1-G4	Q102	1:A4	1-S3

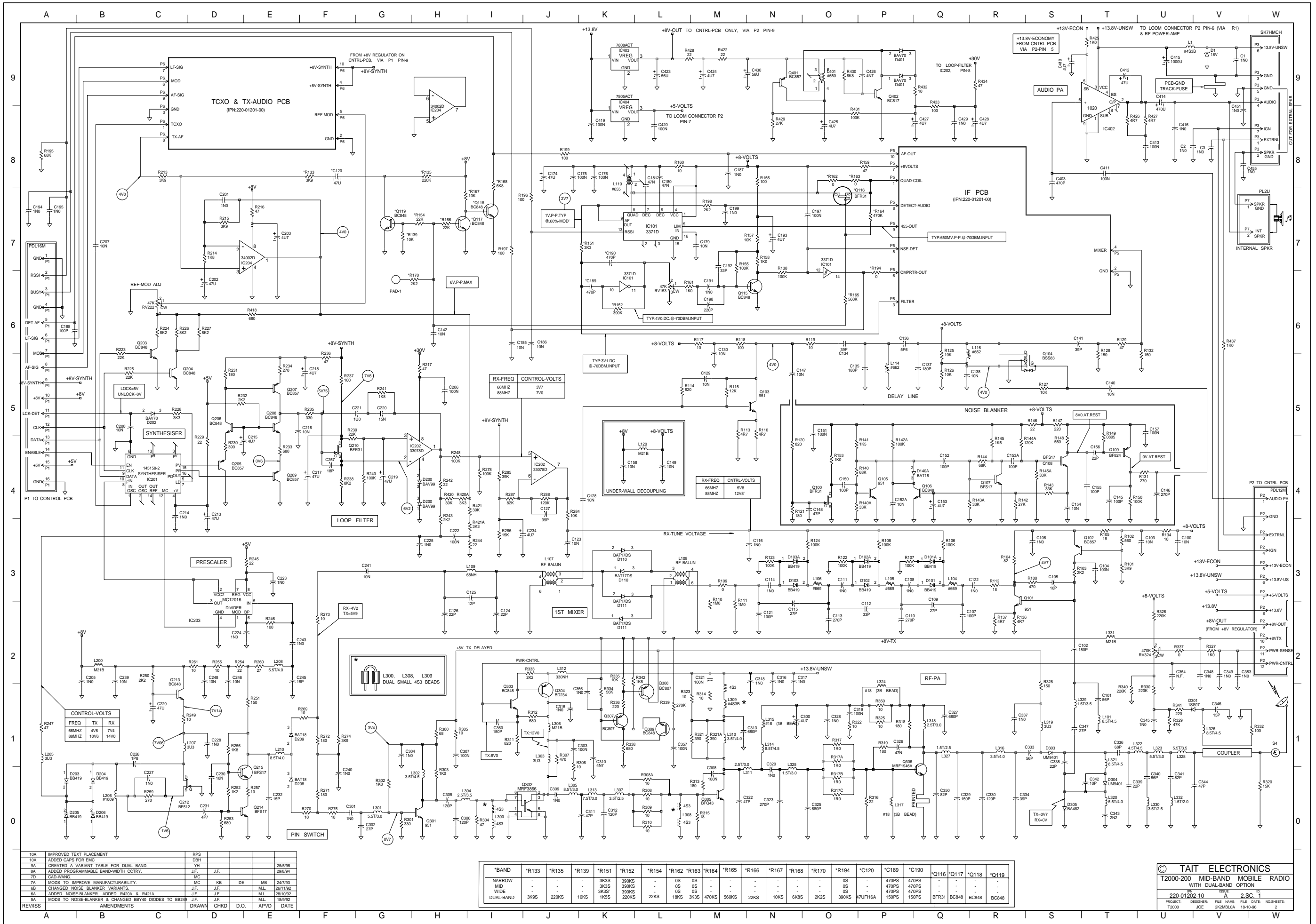
Device	PCB	Circuit	Device	PCB	Circuit	Device	PCB	Circuit	Device	PCB	Circuit
Q103	1:E4	1-N5	R140A	1:E6	1-O4	R252	1:J5	1-D0	R425	1:L9	1-T9
Q104	1:C4	1-S5	R141	1:F6	1-O4	R253	1:J5	1-D0	R426	1:L8	1-T8
Q105	1:F6	1-P4	R142	1:F7	1-R4	R254	1:J4	1-D2	R427	1:L8	1-U8
Q106	1:F7	1-Q4	R142A	1:F7	1-P4	R255	1:J4	1-D2	R428	1:K7	1-L9
Q107	1:F7	1-R4	R143	1:E7	1-S4	R256	1:J4	1-D1	R429	1:K6	1-N8
Q108	1:E7	1-S4	R143A	1:E7	1-R4	R257	1:J5	1-E0	R430	1:L6	1-O9
Q109	1:D6	1-T4	R144	1:F7	1-R4	R259	1:K4	1-C0	R431	1:K6	1-O8
Q115	1:C1	1-N6	R144A	1:F7	1-R4	R260	1:J4	1-E2	R432	1:L6	1-Q9
*Q116	1:A3	1-O7	R145	1:F7	1-R4	R261	1:J4	1-D2	R433	1:K6	1-Q8
*Q117	1:G1	1-H7	R145A	1:E6	1-S4	R269	1:H4	1-F1	R434	1:J6	1-R9
*Q118	1:G2	1-I7	R146	1:F6	1-S5	R270	1:H5	1-F0	R437	1:L9	1-V6
*Q119	1:H1	1-G7	R147	1:E6	1-S5	R271	1:H5	1-F0			
Q203	1:H2	1-C5	R148	1:E6	1-S4	R272	1:H5	1-F1	SHIELD	1:E4	
Q204	1:H2	1-C5	R149	1:D6	1-T4	R273	1:H4	1-F2	S4	1:B10	1-W1
Q205	1:J3	1-D4	R150	1:E6	1-T4	R274	1:H5	1-F1			
Q206	1:J3	1-D5	*R151	1:B2	1-K7	R275	1:H5	1-F0	TSP7	1:E7	1-S4
Q207	1:J2	1-E5	*R152	1:B2	1-K6	R278	1:L3	1-I4			
Q208	1:J2	1-E5	RV153	1:B1	1-L6	R284	1:F2	1-J4			
Q209	1:H3	1-E4	R153	1:F6	1-O4	R285	1:L2	1-I4			
Q210	1:K2	1-F4	*R154	1:G1	1-H7	R286	1:L1	1-I3			
Q212	1:K4	1-C0	R155	1:C1	1-M7	R287	1:L2	1-I4			
Q213	1:L4	1-C1	R156	1:C2	1-N8	R288	1:L2	1-J4			
Q214	1:J5	1-E0	R157	1:C1	1-N7	R300	1:G7	1-H1			
Q215	1:J5	1-E0	R158	1:C1	1-N7	R301	1:G6	1-G0			
Q301	1:G6	1-H0	R159	1:C2	1-P8	R302	1:G6	1-G0			
Q302	1:H7	1-I0	R160	1:A1	1-L8	R303	1:G6	1-H0			
Q303	1:J6	1-I1	R161	1:C1	1-L6	R304	1:H7	1-I0			
Q304	1:J6	1-J1	*R162	1:A3	1-O8	R305	1:G7	1-H1			
Q305	1:G9	1-M0	*R163	1:A3	1-O8	R306	1:H6	1-J0			
Q306	2:E9	1-Q0	*R164	1:B3	1-P7	R307	1:H7	1-J1			
Q307	1:H7	1-K1	*R165	1:F3	1-O6	R308	1:G8	1-L0			
Q308	1:H8	1-L1	*R166	1:G1	1-H7	R308A	1:G8	1-L0			
Q309	1:H7	1-L1	*R167	1:G2	1-H7	R309	1:G8	1-L0			
Q401	1:L7	1-N9	*R168	1:G1	1-I8	R310	1:H8	1-L0			
Q402	1:L6	1-P9	*R170	1:G3	1-H6	R311	1:J6	1-I1			
			*R194	1:C3	1-P6	R312	1:J6	1-J1			
R100	1:B4	1-S3	R195	1:L1	1-A8	R313	1:G8	1-M0			
R101	1:A4	1-T3	R196	1:F3	1-J7	R314	1:G10	1-M1			
R102	1:A3	1-T3	R197	1:F3	1-I7	R315	2:H9	1-M0			
R103	1:A4	1-S3	R198	1:C2	1-M7	R316	1:E9	1-P0			
R104	1:B4	1-R3	R199	1:F3	1-J8	R317	1:F9	1-O1			
R105	1:A4	1-T3	R213	1:H1	1-C8	R317A	1:F10	1-O1			
R106	1:C4	1-Q3	R214	1:G2	1-D7	R317B	1:F9	1-O0			
R107	1:C5	1-P3	R215	1:F2	1-D7	R317C	1:F9	1-O0			
R108	1:D4	1-P3	R216	1:F2	1-E7	R318	1:D9	1-P1			
R109	1:E5	1-M3	R217	1:H4	1-H5	R319		1-P1			
R110	1:F5	1-M2	RV222	1:J2	1-C6	R320	1:B10	1-W0			
R111	1:E5	1-M2	R223	1:H2	1-B5	R321	1:G10	1-M1			
R112	1:B4	1-R3	R224	1:H2	1-C6	R321A	1:G10	1-M1			
R113	1:E4	1-M5	R225	1:G2	1-B5	R322	1:D8	1-O1			
R114	1:E4	1-L5	R226	1:J1	1-C6	R323	1:H10	1-M1			
R115	1:E4	1-M5	R227	1:J1	1-D6	RV324	1:E7	1-U2			
R116	1:E4	1-N5	R228	1:G3	1-C5	R325	1:D8	1-P1			
R117	1:F4	1-M6	R229	1:H3	1-D4	R326	1:D7	1-U2			
R118	1:E4	1-M6	R230	1:J3	1-D4	R327	1:J6	1-V2			
R119	1:E3	1-O6	R231	1:J3	1-D5	R328	1:D7	1-S1			
R120	1:F6	1-N4	R232	1:J3	1-D5	R329	1:A9	1-U1			
R121	1:F6	1-N4	R233	1:J2	1-E4	R330	1:A8	1-U1			
R122	1:D5	1-O3	R234	1:H2	1-E5	R332	1:A10	1-W1			
R123	1:E5	1-N3	R235	1:J2	1-F5	R333	1:J6	1-J2			
R124	1:E4	1-O3	R236	1:K3	1-F5	R334	1:H6	1-K1			
R125	1:B4	1-Q5	R237	1:L3	1-F5	R335	1:H8	1-K2			
R126	1:B4	1-Q5	R238	1:K3	1-F4	R336	1:H8	1-K1			
R127	1:C3	1-S5	R239	1:K2	1-F4	R337	1:E7	1-U2			
R128	1:B3	1-T5	R240	1:K2	1-G4	R338	1:H7	1-K1			
R129	1:B3	1-T6	R241	1:J3	1-G5	R339	1:H7	1-L1			
R131	1:E6	1-U4	R242	1:J3	1-H4	R340	1:A8	1-T1			
R132	1:B3	1-U5	R243	1:J3	1-H3	R341	1:A8	1-U1			
*R133	1:H1	1-F8	R244	1:K3	1-I3	R342	1:H6	1-K2			
R134	1:B3	1-U3	R245	1:H3	1-E3	R350	1:D8	1-P1			
*R135	1:G2	1-H8	R246	1:G3	1-E2	R418	1:J2	1-E6			
R136	1:B5	1-R2	R247	1:K4	1-A1	R420	1:J3	1-H4			
R137	1:B5	1-R2	R248	1:L3	1-H4	R420A	1:J3	1-H4			
R138	1:C2	1-N6	R249	1:L4	1-C1	R421	1:K3	1-I4			
*R139	1:H1	1-G7	R250	1:L4	1-C2	R421A	1:K3	1-I3			
R140	1:F6	1-O4	R251	1:J4	1-E1	R422	1:K7	1-M9			



T2000-200 RF PCB (IPN 220-01202-10) - Bottom Side



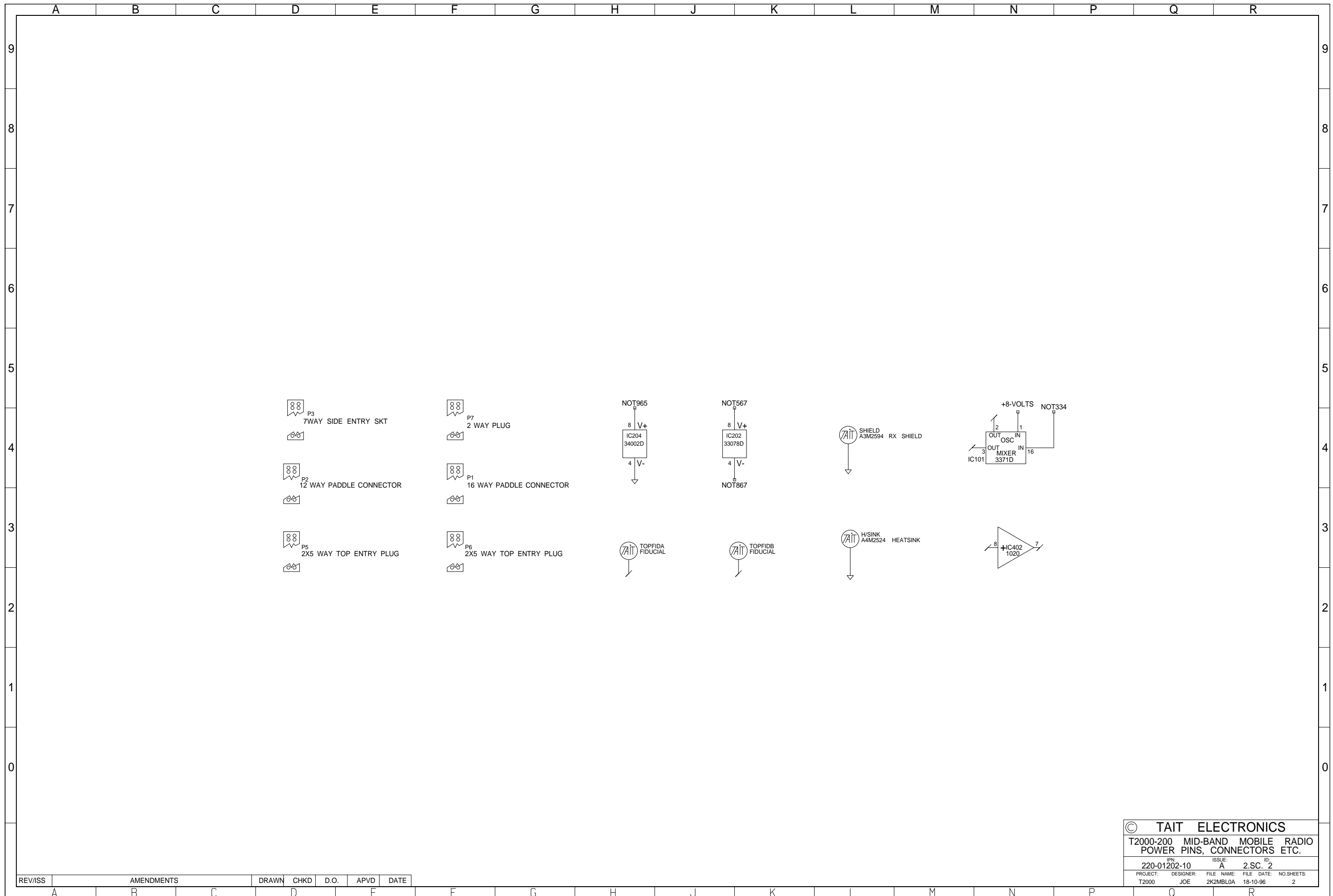
T2000-200 RF PCB (IPN 220-01202-10) - Top Side



10A	IMPROVED TEXT PLACEMENT	RPS	
10A	ADDED CAPS FOR EMI	DBH	
9A	CREATED A VARIANT TABLE FOR DUAL BAND	YH	25/95
8A	ADDED PROGRAMMABLE BAND-WIDTH CTRY.	J.F.	29/94
7D	CAO-WING	MC	
7A	MODS TO IMPROVE MANUFACTURABILITY	MC	NB DE MB 24/93
6B	CHANGED NOISE-BLANKER VARIANTS	J.F.	J.F. M.L. 26/1/92
6A	ADDED NOISE-BLANKER ADDED INDUCTOR R421A	J.F.	J.F. M.L. 26/1/92
5A	MODS TO NOISE-BLANKER & CHANGED BB40 DIODES TO BB249	J.F.	J.F. M.L. 18/9/92
REVISS	AMENDMENTS	DRAWN	CHKD D.O. APVD DATE

*BAND	*R133	*R135	*R139	*R151	*R152	*R154	*R162	*R163	*R164	*R165	*R166	*R167	*R168	*R170	*R194	*C120	*C189	*C190	*Q116	*Q117	*Q118	*Q119
NARROW	-	-	-	3K3S	390KS	-	OS	OS	-	-	-	-	-	-	OS	-	470PS	470PS	BFR31	BC848	BC848	BC848
MID	-	-	-	3K3S	380KS	-	OS	OS	-	-	-	-	-	-	OS	-	470PS	470PS	BFR31	BC848	BC848	BC848
WIDE	-	-	-	3K3S	390KS	-	OS	OS	-	-	-	-	-	-	OS	-	470PS	470PS	BFR31	BC848	BC848	BC848
DUAL-BAND	3K3S	220KS	10KS	1K5S	220KS	22KS	18KS	3K3S	470KS	560KS	22KS	10KS	6K8S	2K2S	390KS	47UF16A	150PS	150PS	BFR31	BC848	BC848	BC848

© TAIT ELECTRONICS
T2000-200 MID-BAND MOBILE RADIO
WITH DUAL-BAND OPTION
ISSUE ID: 2.5C.1
PROJECT: T2000-200 FILE NAME: T2000-200_RF_PCB_7.2.9.DWG FILE DATE: 18-10-96 NO. SHEETS: 2



© TAIT ELECTRONICS				
T2000-200 MID-BAND MOBILE RADIO POWER PINS, CONNECTORS ETC.				
IPN:	220-01202-10	ISSUE:	A	ID: 2, SC, 2
PROJECT:	T2000	DESIGNER:	JOE	FILE NAME: 2K2MBLOA FILE DATE: 18-10-96 NO. SHEETS: 2

REV/ISS	AMENDMENTS	DRAWN	CHKD	D.O.	APVD	DATE
A						