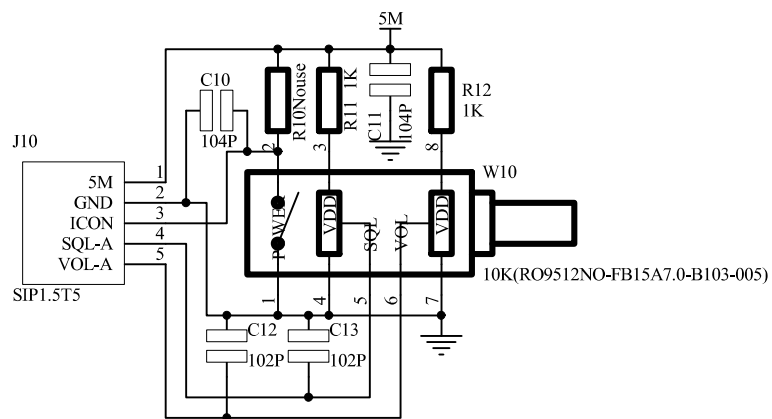
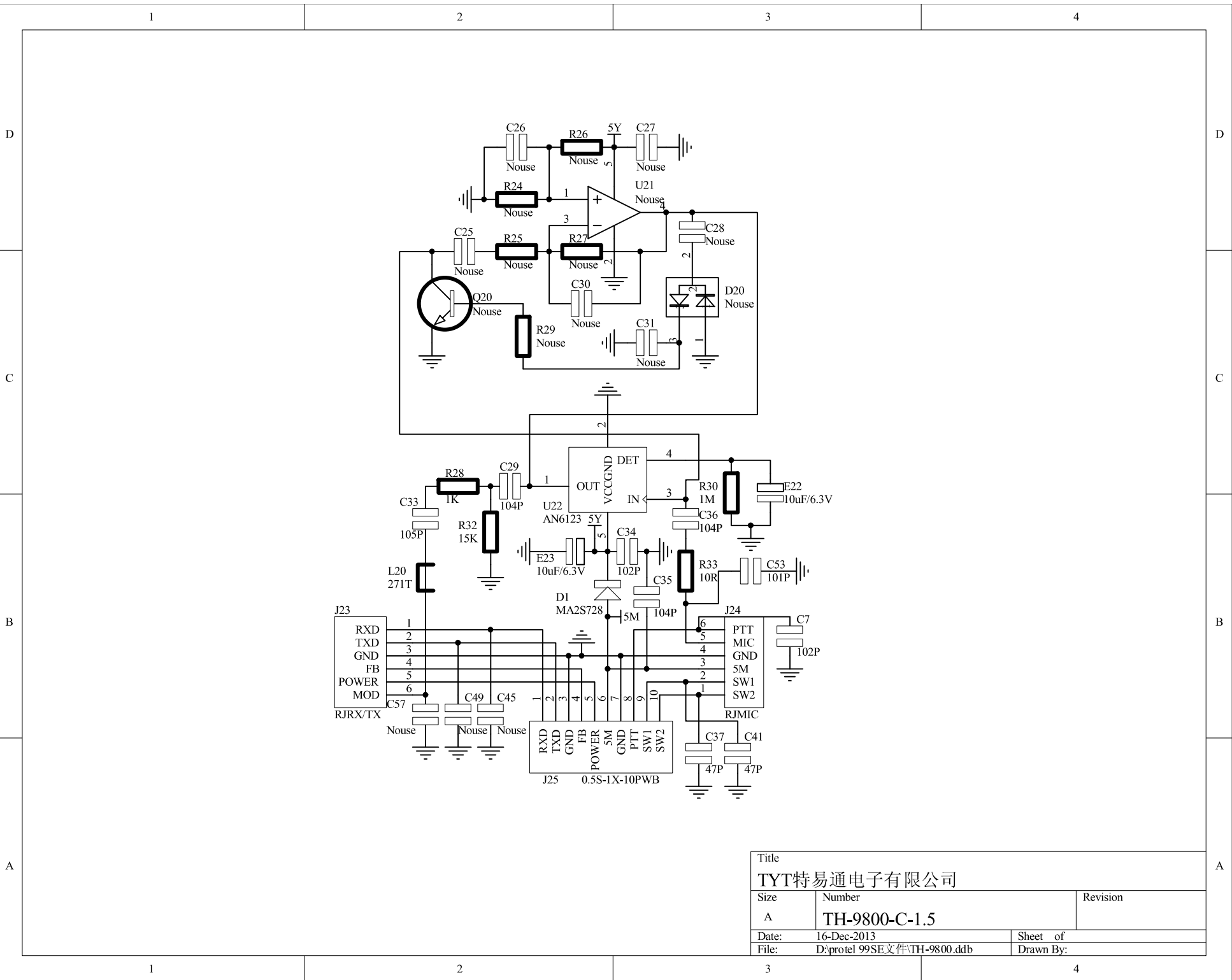


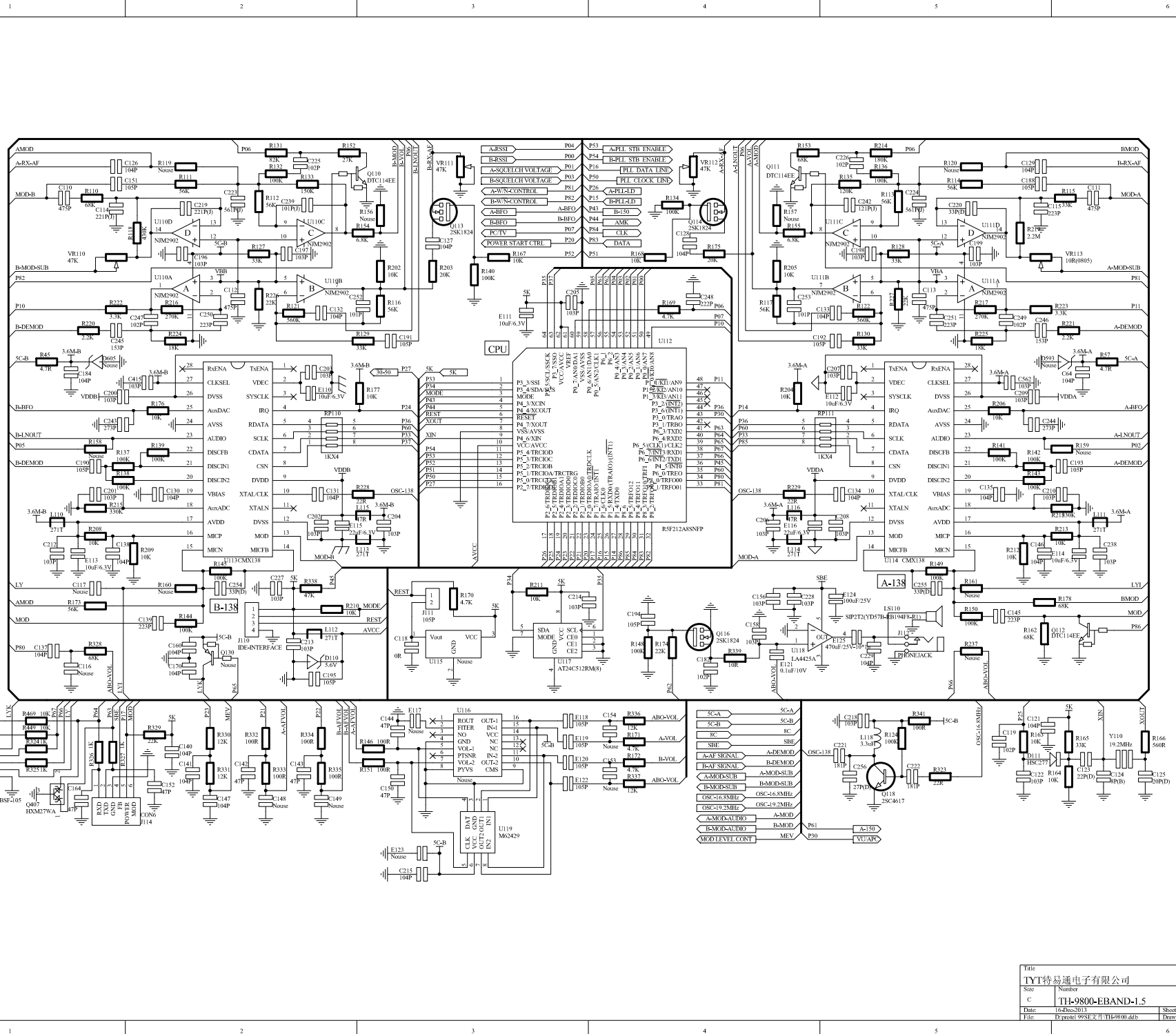
Title TYT特易通电子有限公司		
Size A	Number TH-9800-A-1.5	Revision
Date: 16-Dec-2013	Sheet of	
File: D:\protel 99SE文件\TH-9800.ddb	Drawn By:	



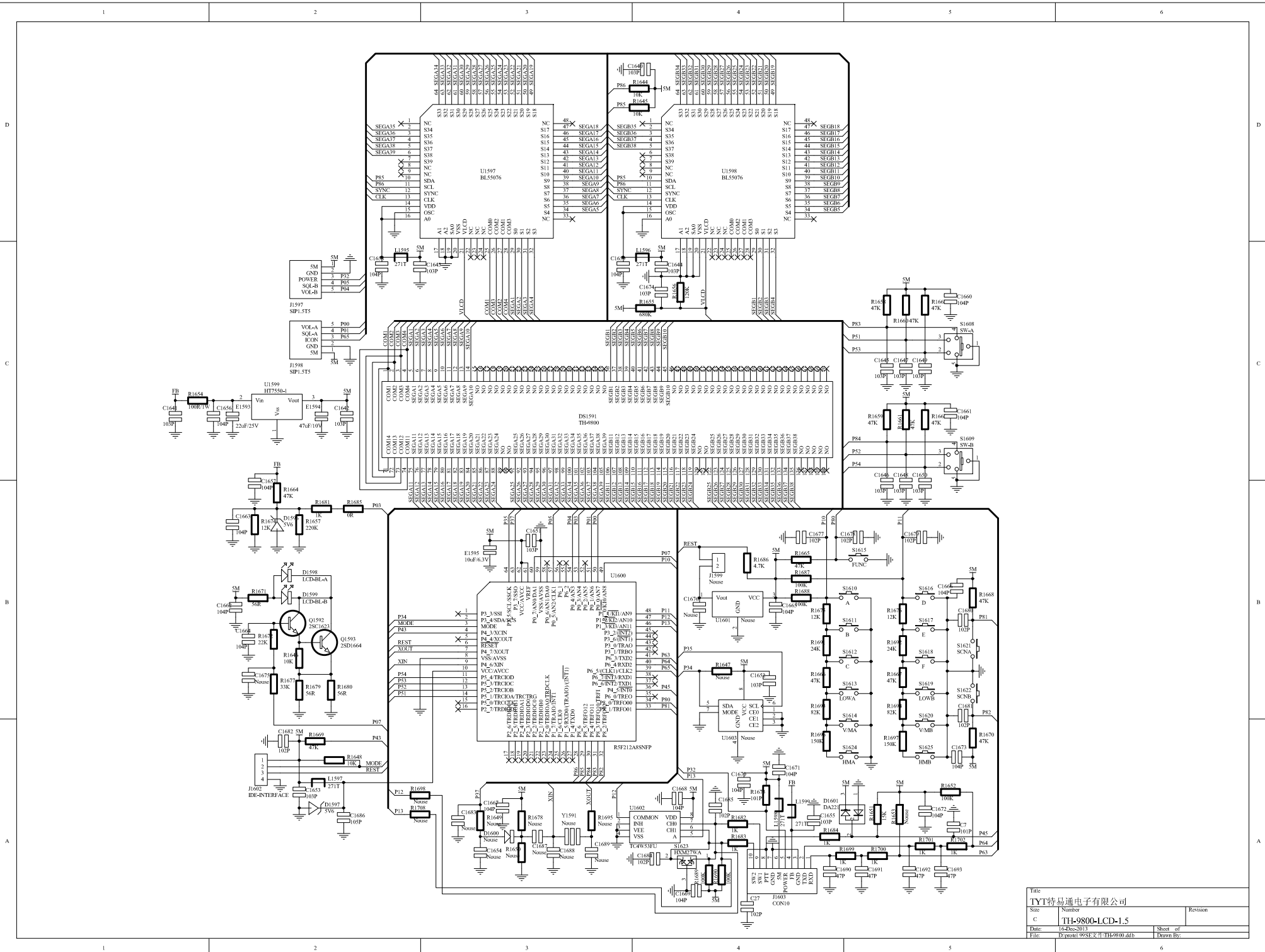
Title		
TYT特易通电子有限公司		
Size	Number	Revision
A	TH-9800-B-1.5	
Date:	16-Dec-2013	Sheet of
File:	D:\protel 99SE文件\TH-9800.ddb	Drawn By:



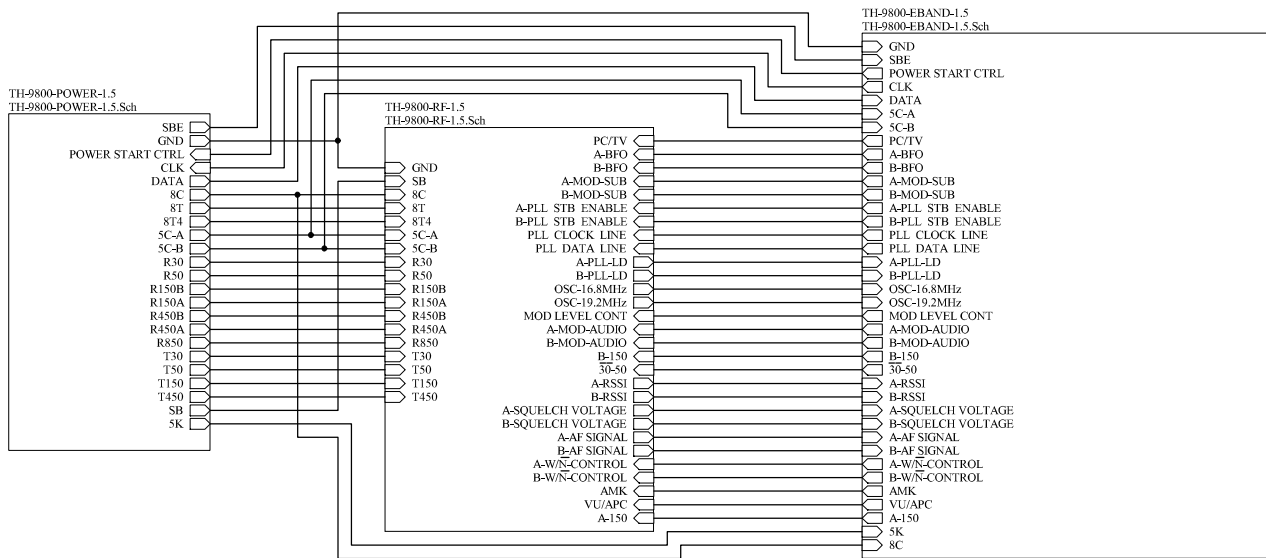
Title		
TYT特易通电子有限公司		
Size	Number	Revision
A	TH-9800-C-1.5	
Date:	16-Dec-2013	Sheet of
File:	D:\protel 99SE文件\TH-9800.ddb	Drawn By:



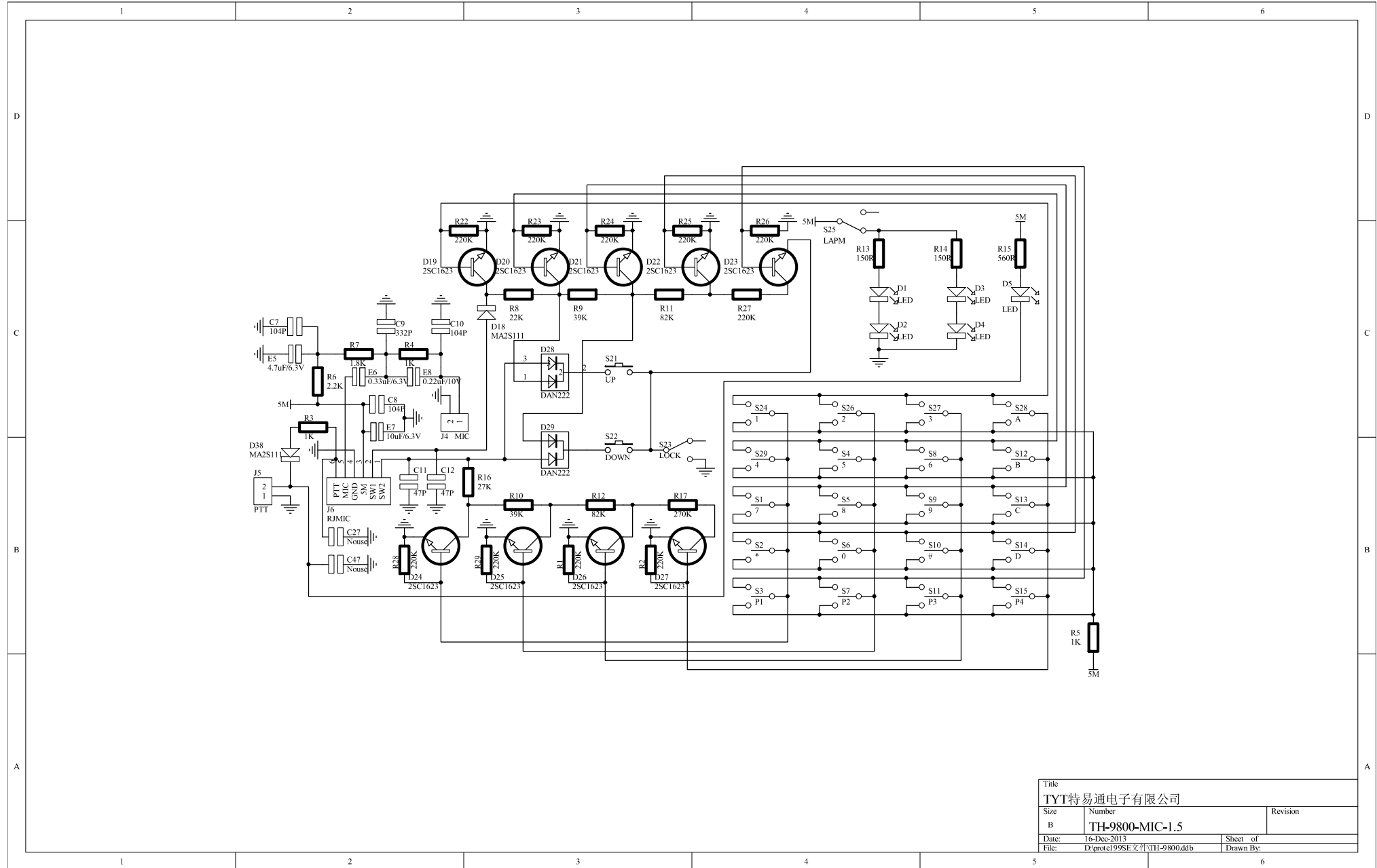
TYT特易通电子有限公司		
Size	Number	Revision
C	TI-9800-EBAND-1.5	
Date:	8/28/2013	Sheet of
File:	TY-9800-1.5-TI-9800.dbt	Drawn By:



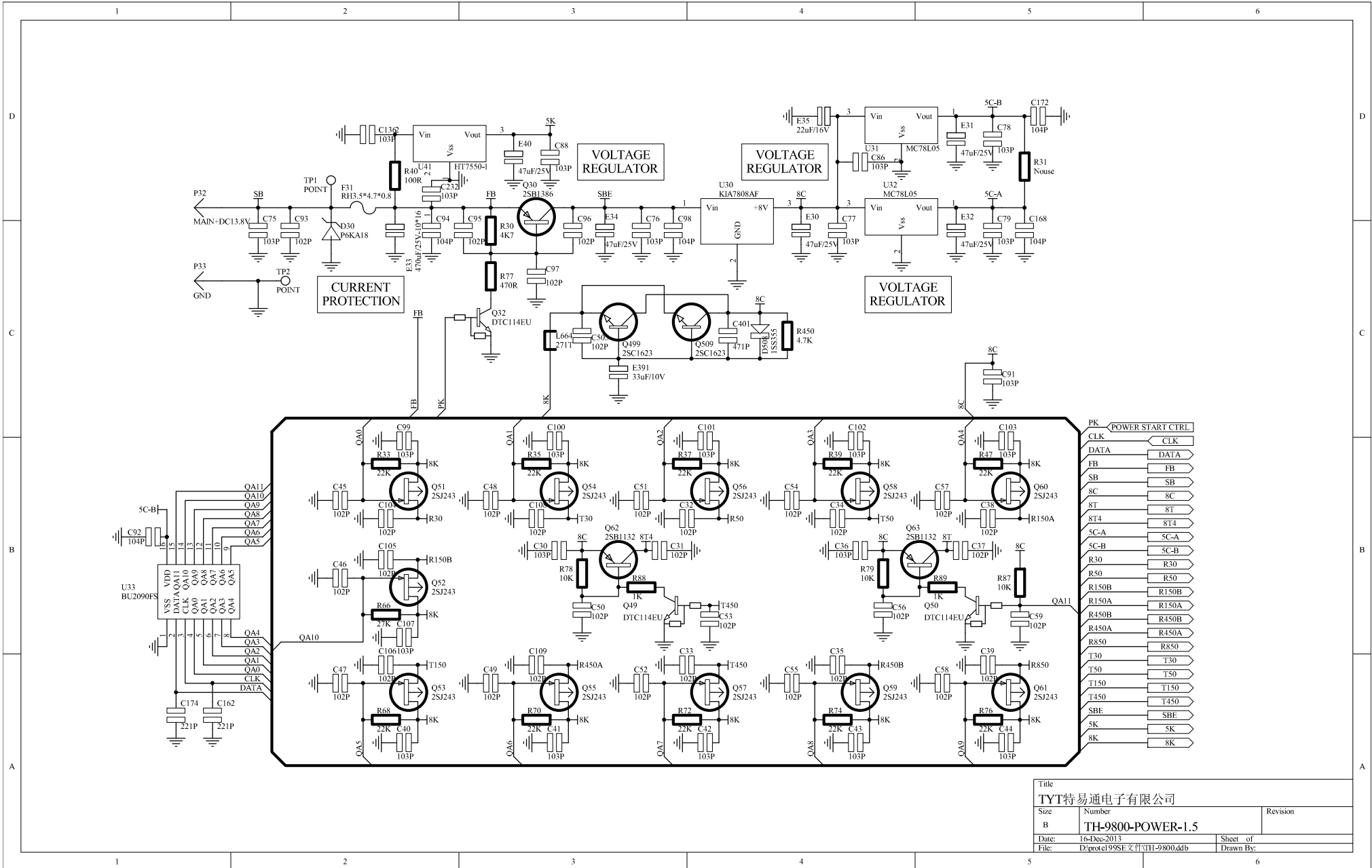
Title		TYT特易通电子有限公司	
Size	Number	Revision	
C	TI1-9800-LCD-1.5		
Date:	6/28/2013	Sheet of	
File:	PC board 9800-LCD-1.5	Drawn By:	



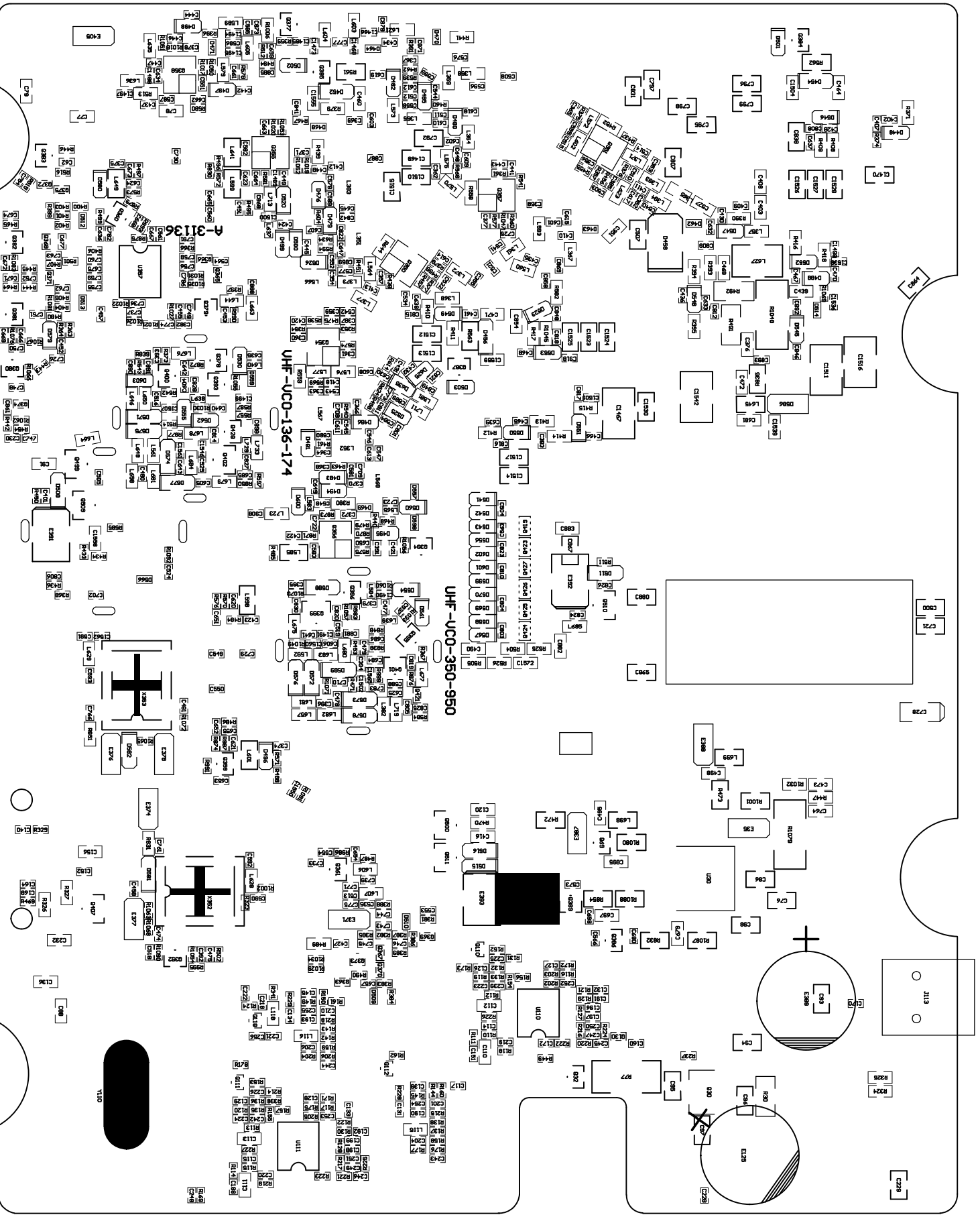
Title		
TYT特易通电子有限公司		
Size	Number	Revision
B	TH-9800-LJ-1.5	
Date:	16-Dec-2013	Sheet of
File:	D:\root\995E文件\TH-9800.dtb	Drawn By:



Title		
TYT特易通电子有限公司		
Size	Number	Revision
B	TH-9800-MIC-1.5	
Date:	16-Dec-2013	Sheet of
File:	D:\root\el995E文件\TH-9800.dtb	Drawn By:



Title		TYT特易通电子有限公司	
Size	Number	Revision	
B	TH-9800-POWER-1.5		
Date:	16-Dec-2013	Sheet of	
File:	D:\root\995E文件\TH-9800.dtb	Drawn By:	



7

7

7

7

7

7

7

7

7

7

7

7

7

7

7

7

7

7

7

7

7

7

7

7

7

7

7

7

7

7

7

7

7

7

7

7

7

7

7

7

7

7

7

7

7

7

7

7

7

7

7

7

7

7

7

7

7

7

7

7

7

7

7

7

7

7

7

7

7

7

7

7

7

7

7

7

7

7

7

7

7

7

7

7

7

7

7

7

7

7

7

7

7

7

7

7

7

7

7

7

7

7

7

7

7

7

7

7

7

7

7

7

7

7

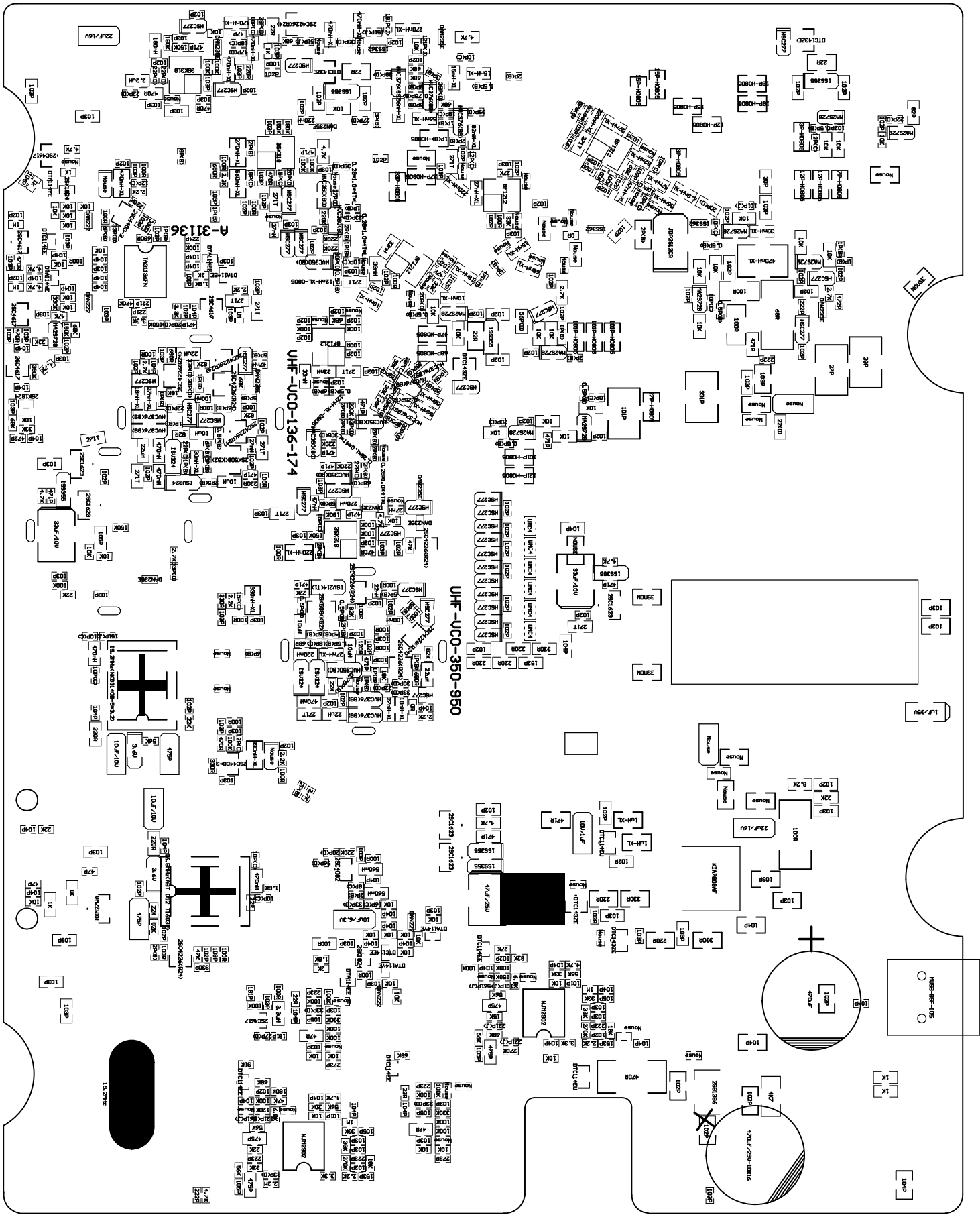
7

7

7

7

7



J1

C3

C4

C1

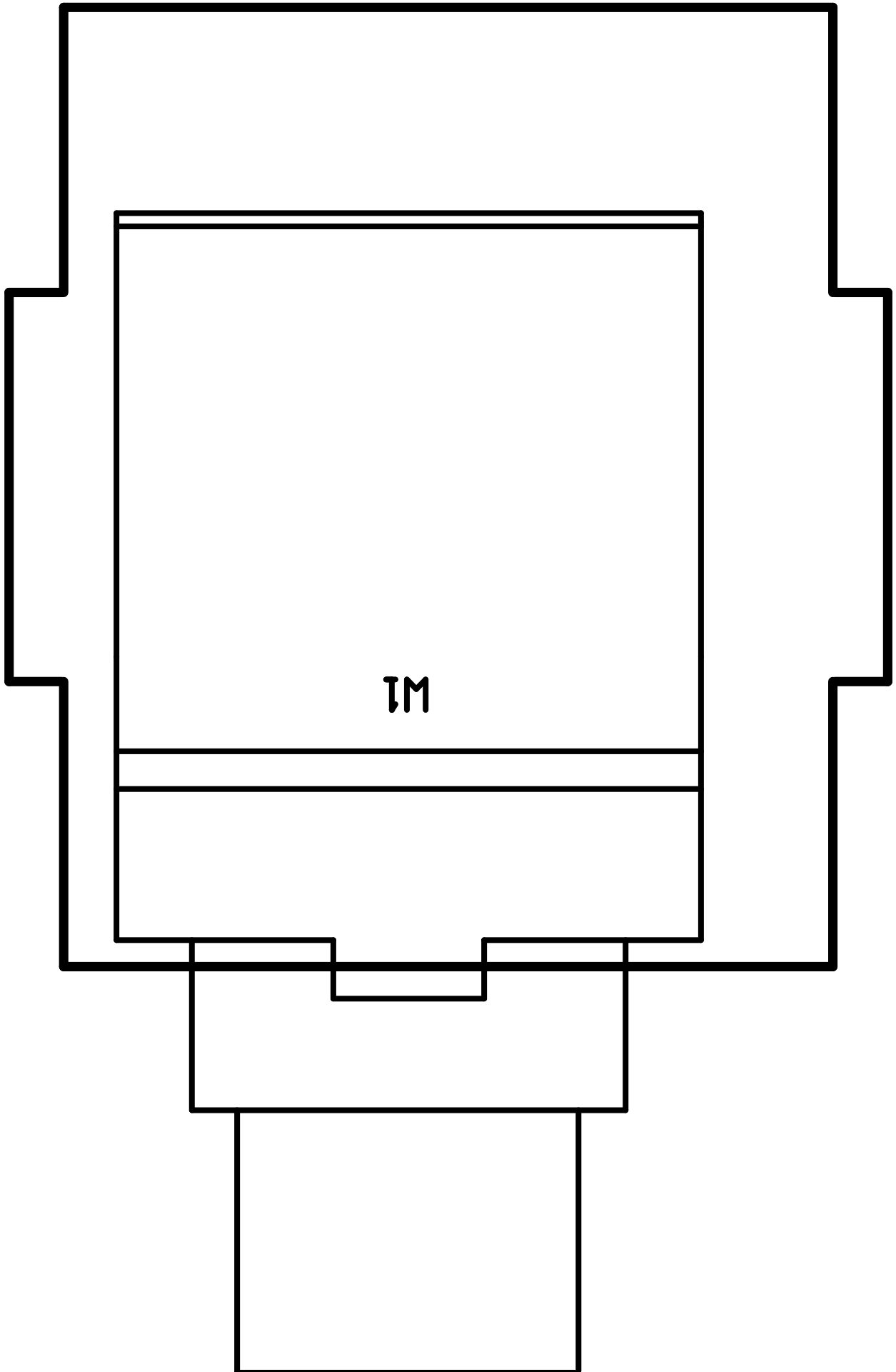
R1

R2

C2

TH-9800-A
2013-9-27-1.5

R3



J10

C11

C10

R10

TH-9800-B

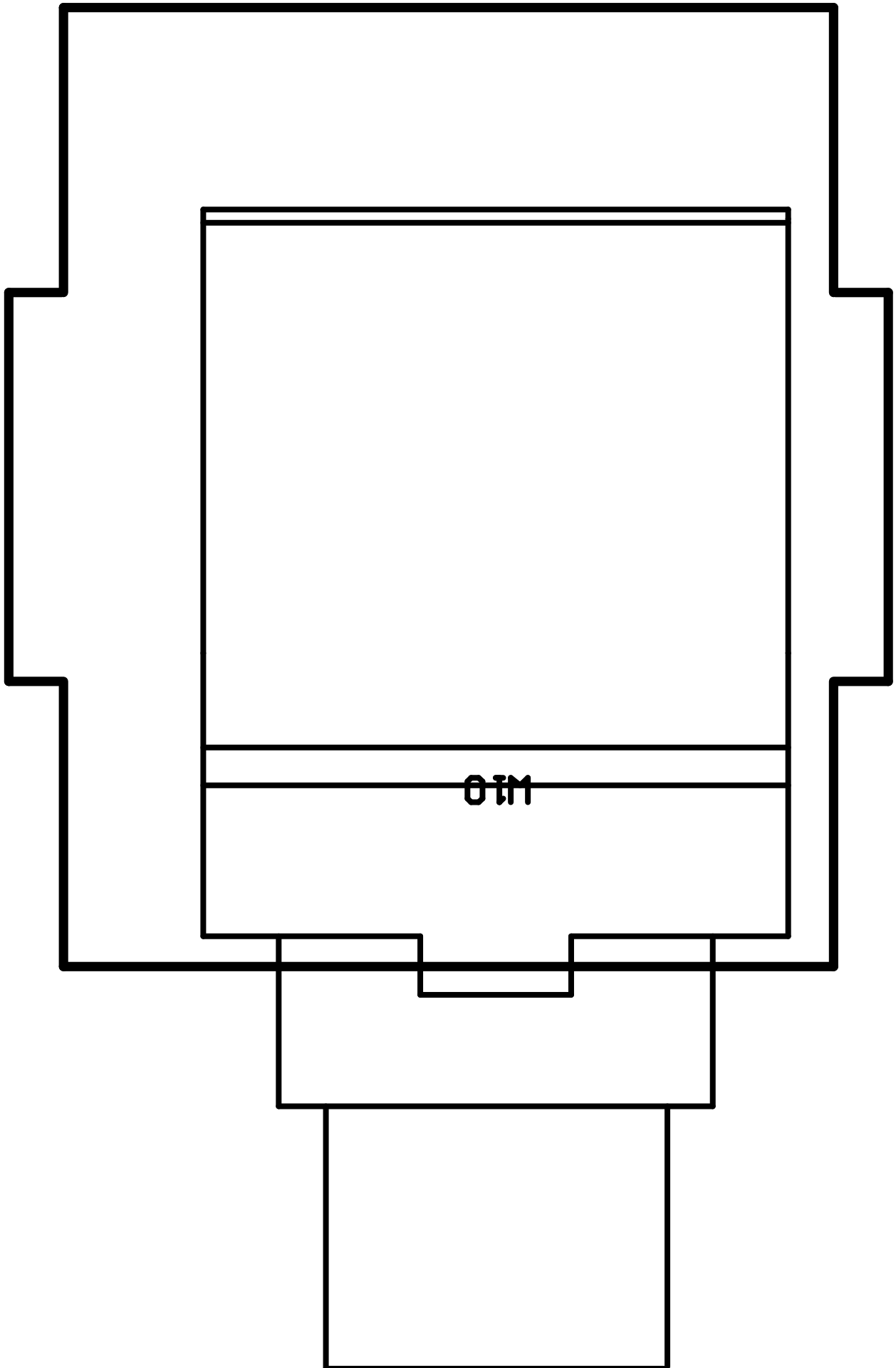
R11

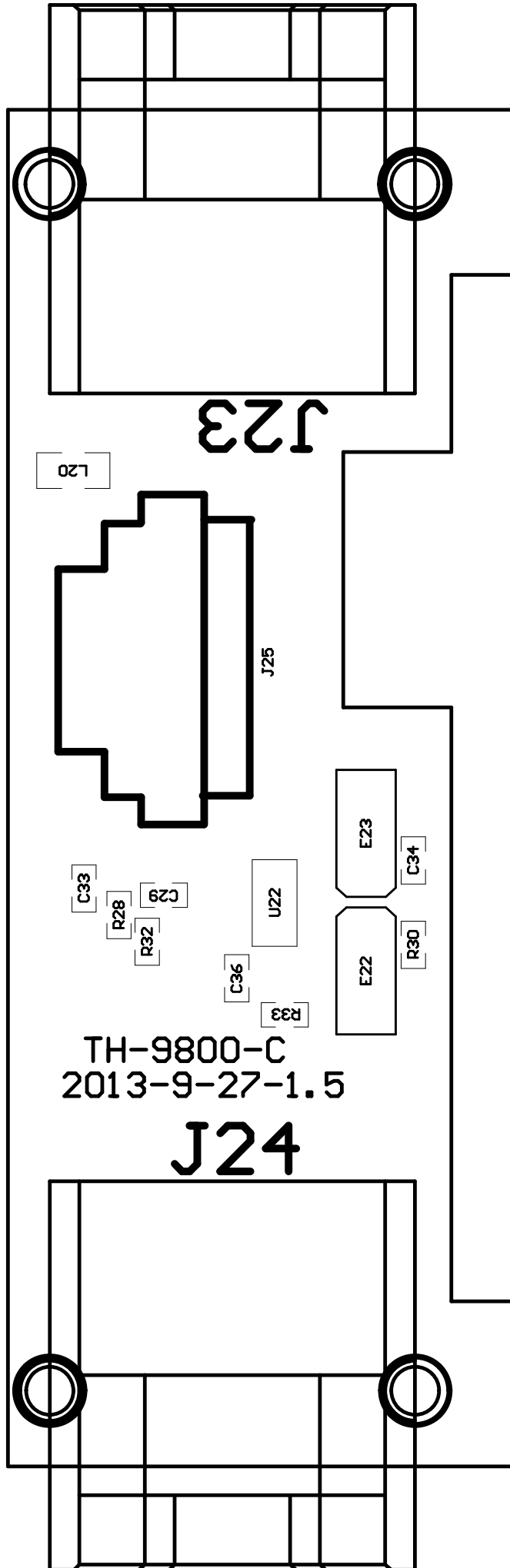
C13

C12

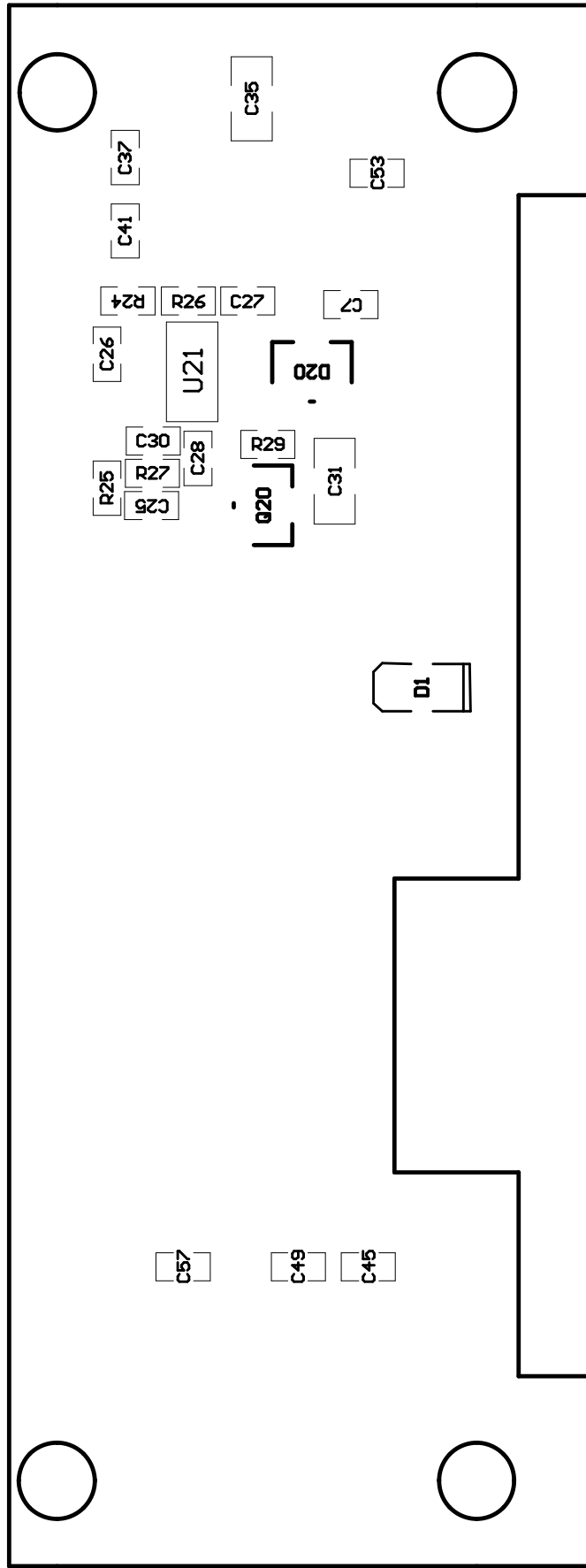
2013-9-27-1.5

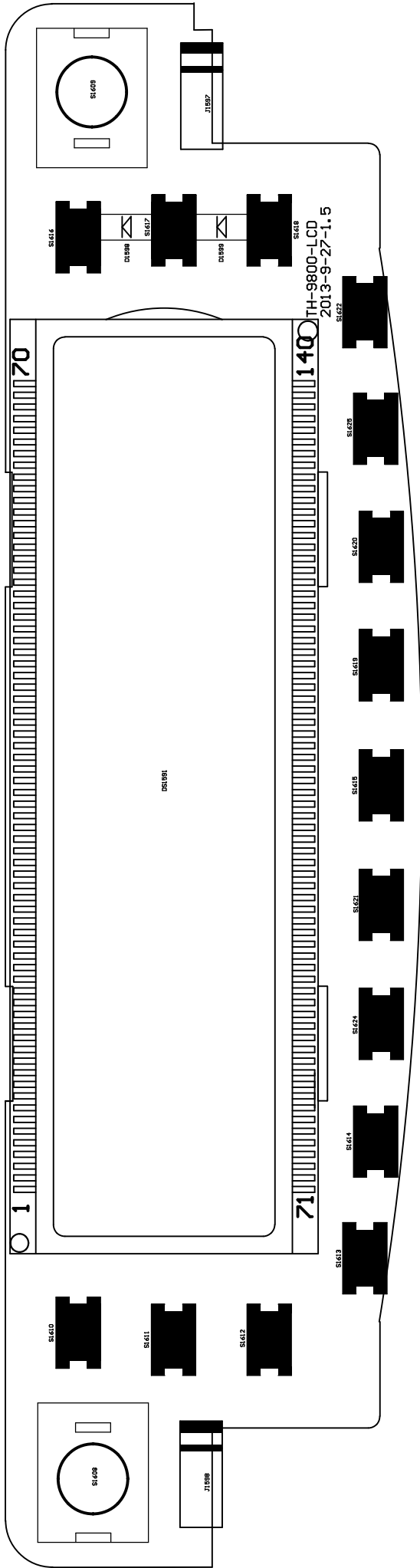
R12

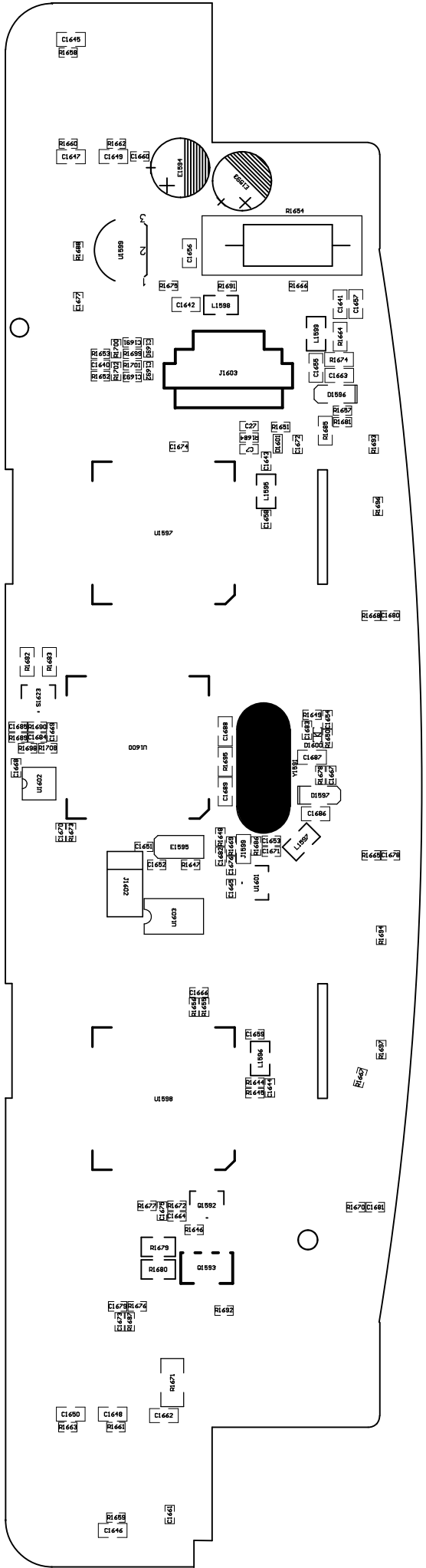


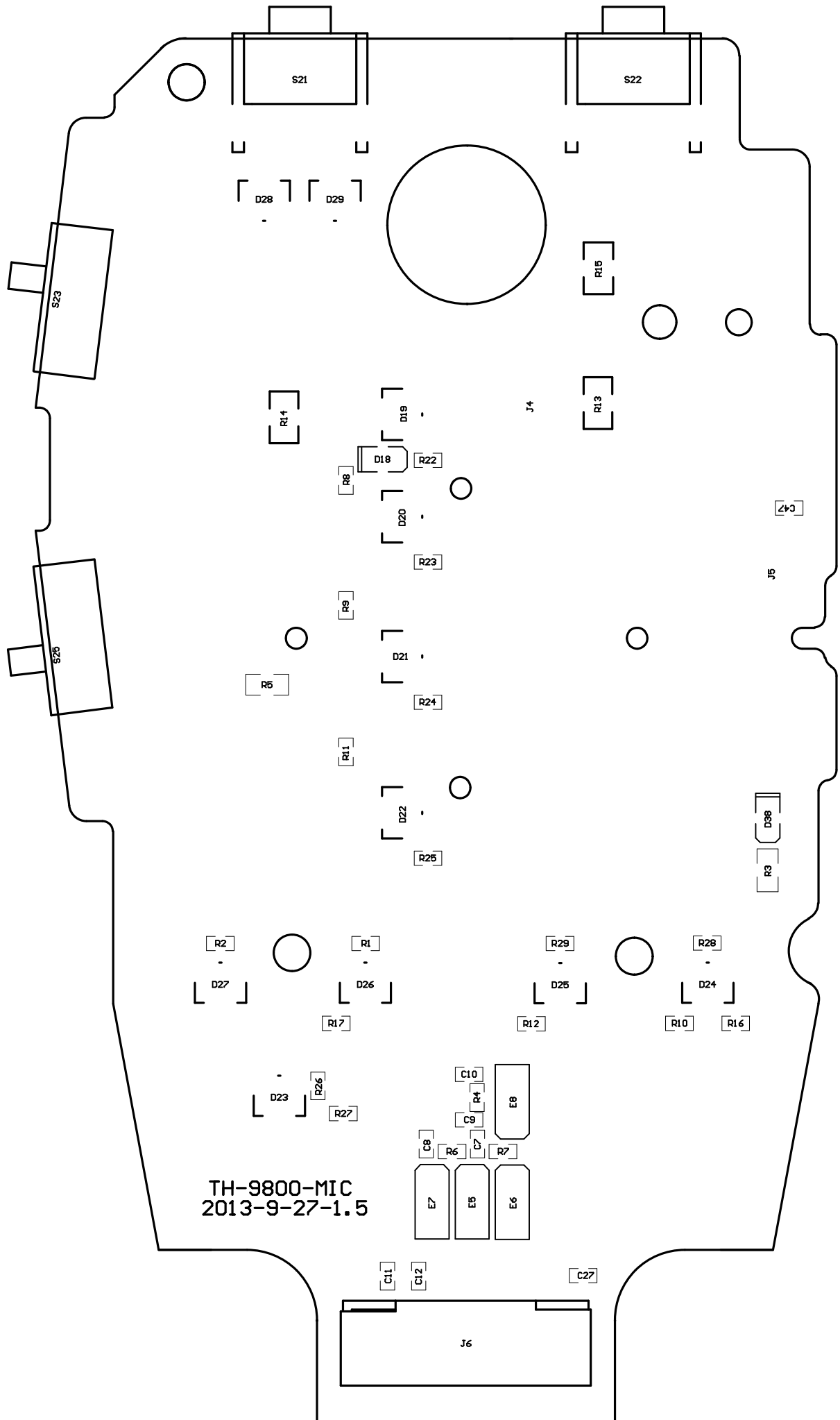


TH-9800-C
2013-9-27-1.5

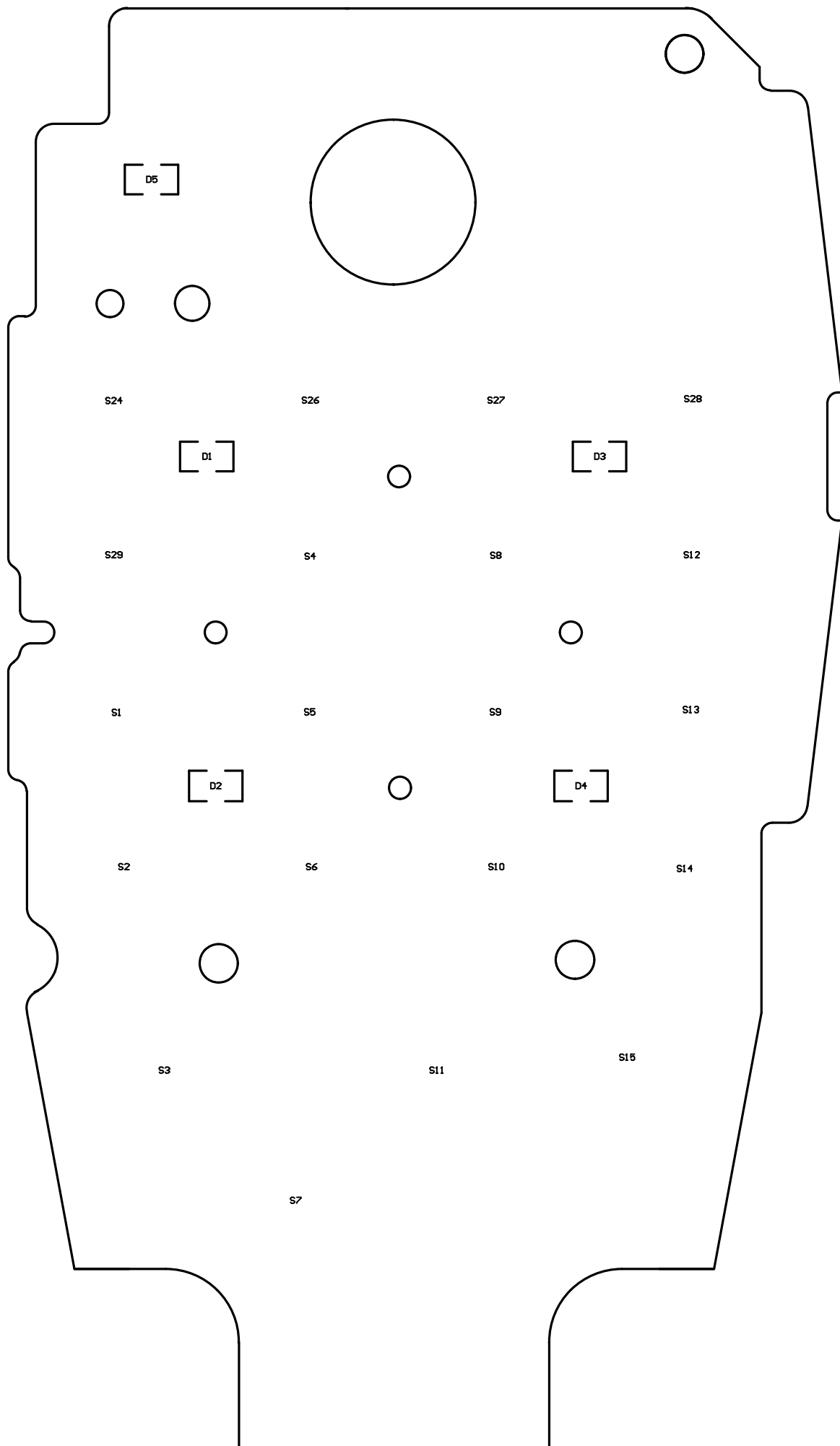








TH-9800-MIC
2013-9-27-1.5



SIP1.5T5

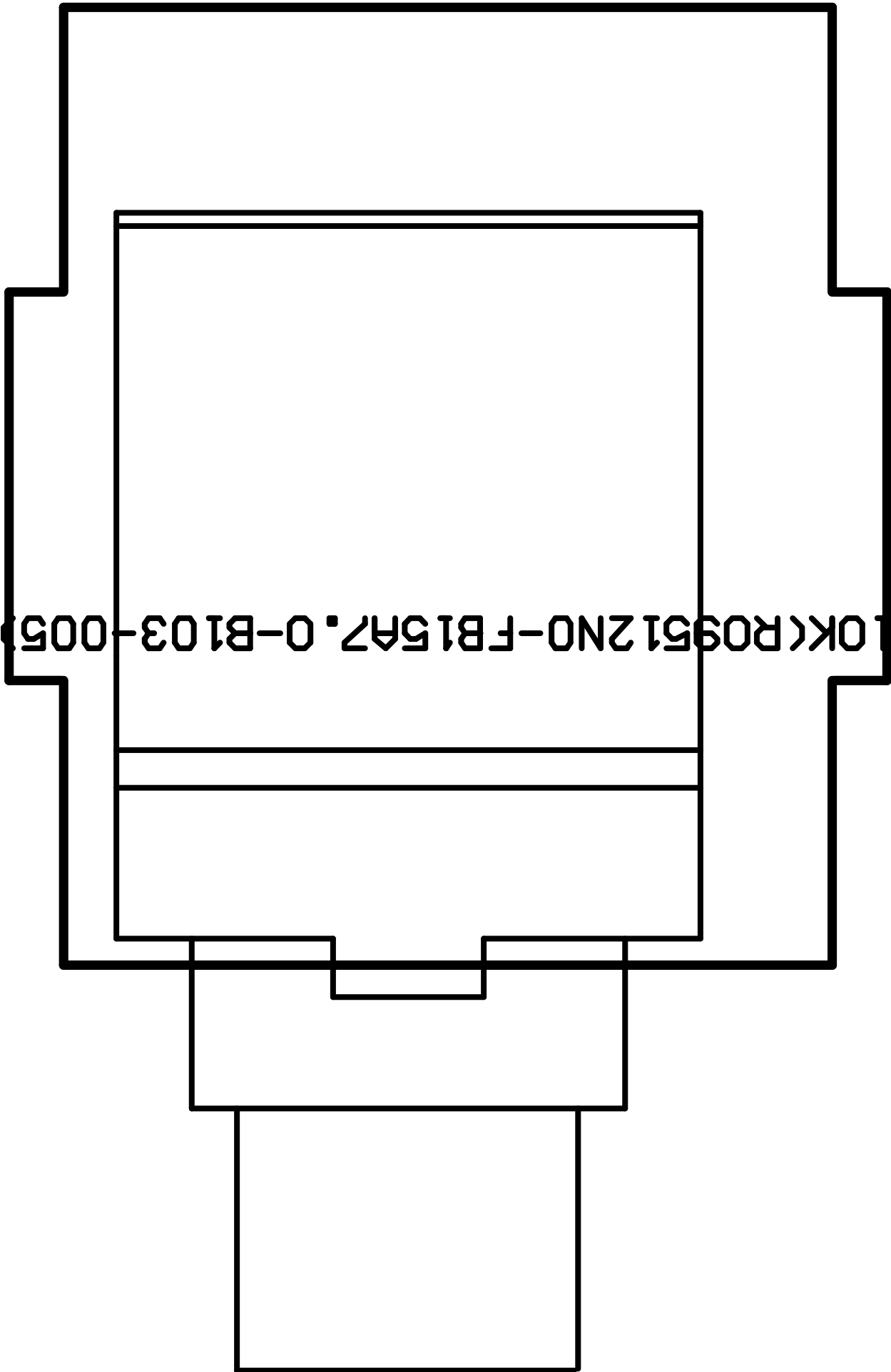
102P 102P 104P

10K

1K

104P TH-9800-A
2013-9-27-1.5

1K



SIP1.5T5

104P

104P

Mouse

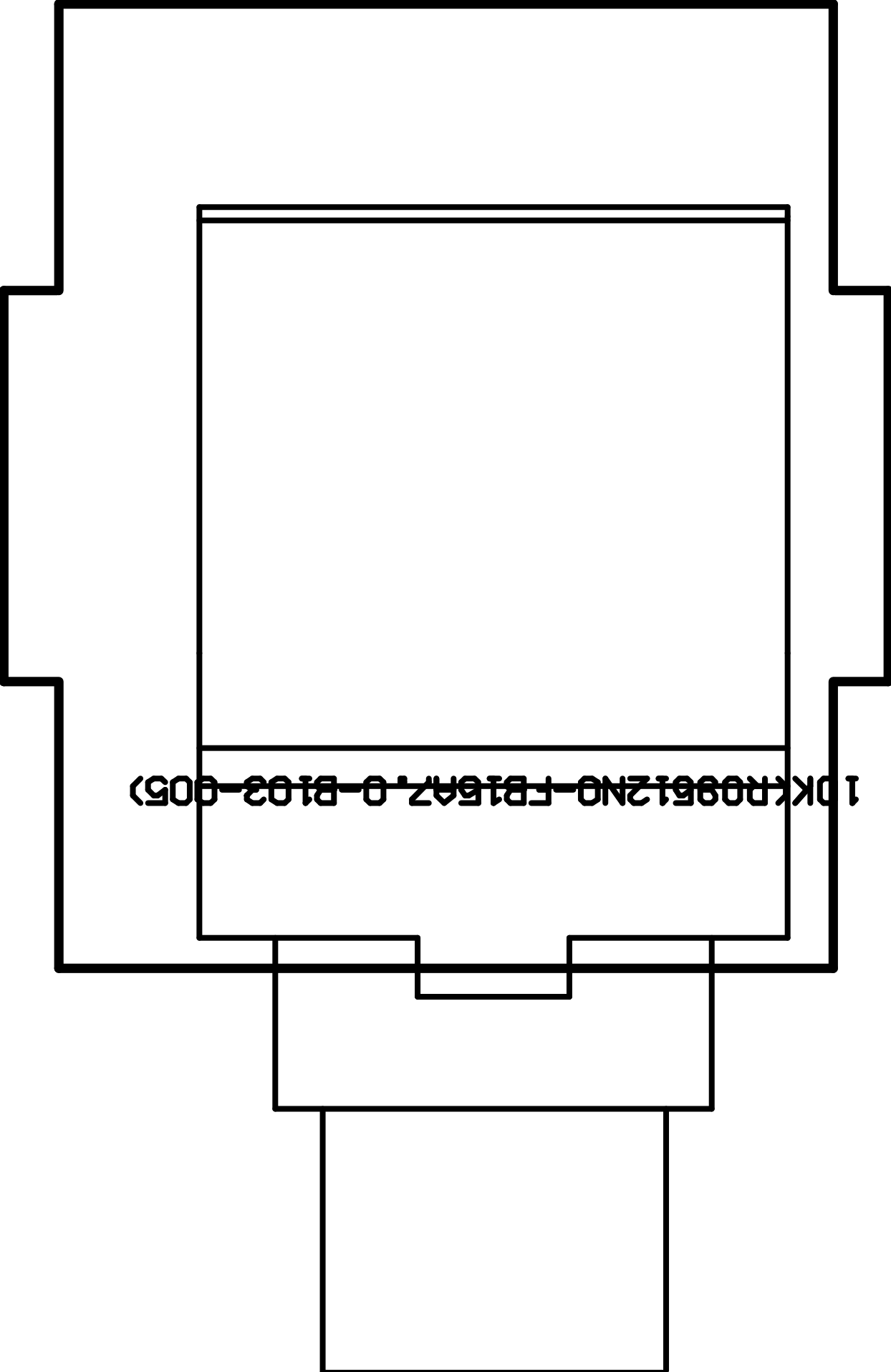
TH-9800-B

1K

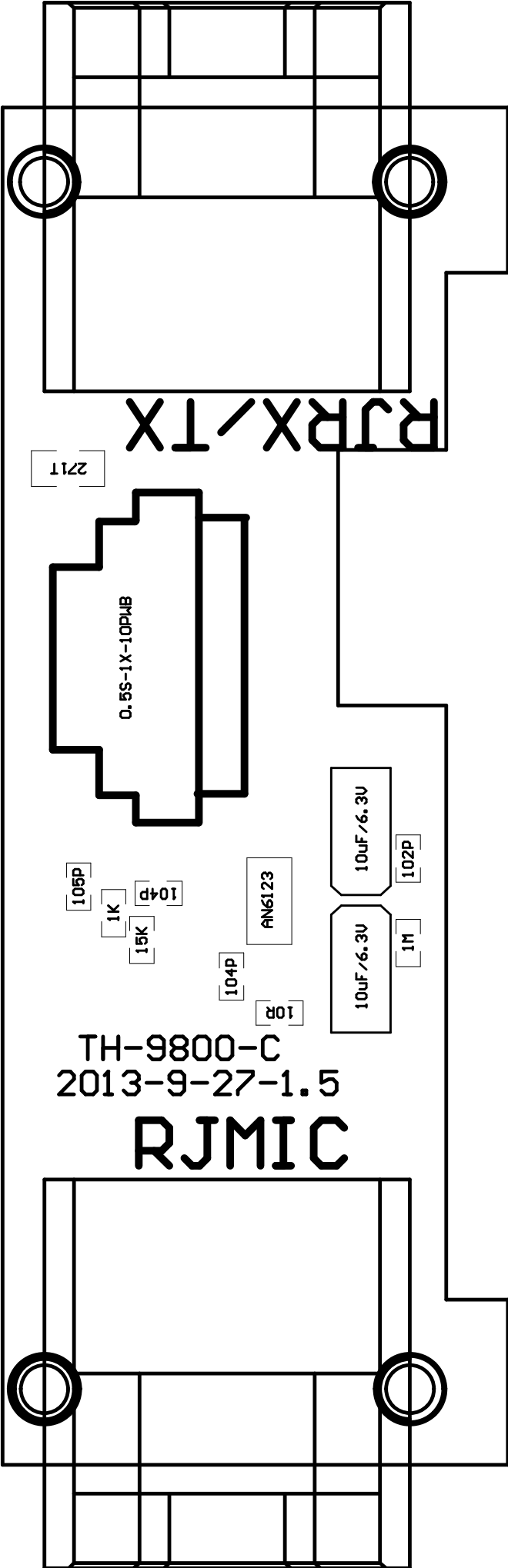
102P

102P

2013-9-27-1¹K.5



1 DKR09612NO-FB16AZ-0-B103-005)



RJR/TX

271T

0.5S-1X-10PMB

10uF/6.3V

102P

10uF/6.3V

1M

AN6123

104P

10R

106P

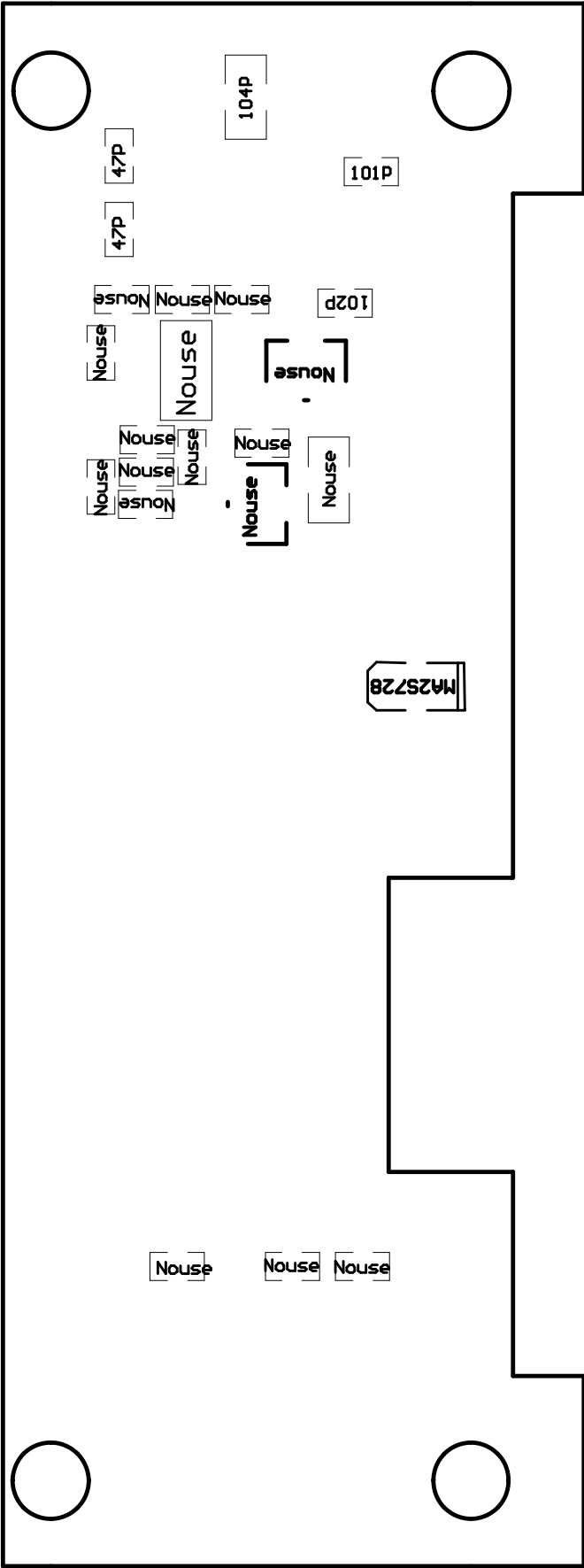
1K

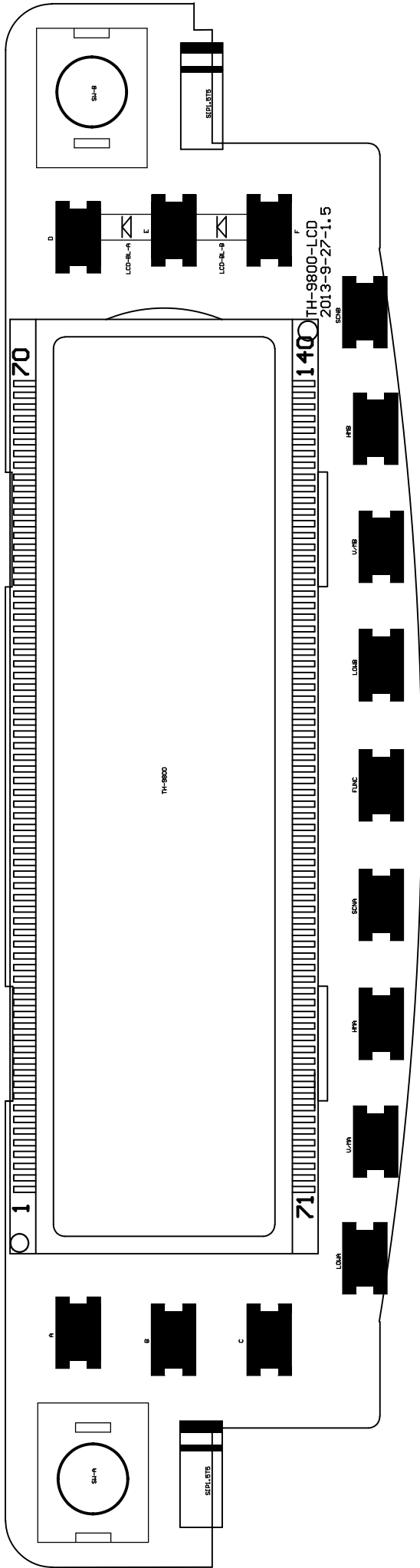
15K

104D

TH-9800-C
2013-9-27-1.5

RJMIC





70

1

A

B

C

D

LCD-RL-A

E

LCD-RL-B

F

140

71

LCMA

U/PA

HPA

SCVA

FUNC

LOAB

U/AB

HPB

SCB

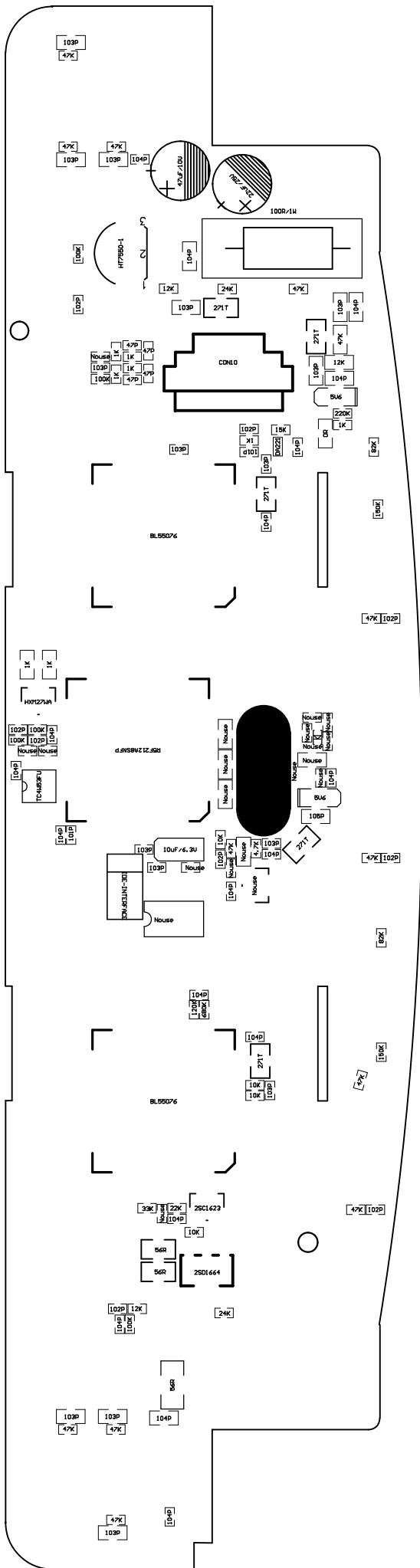
SH-A

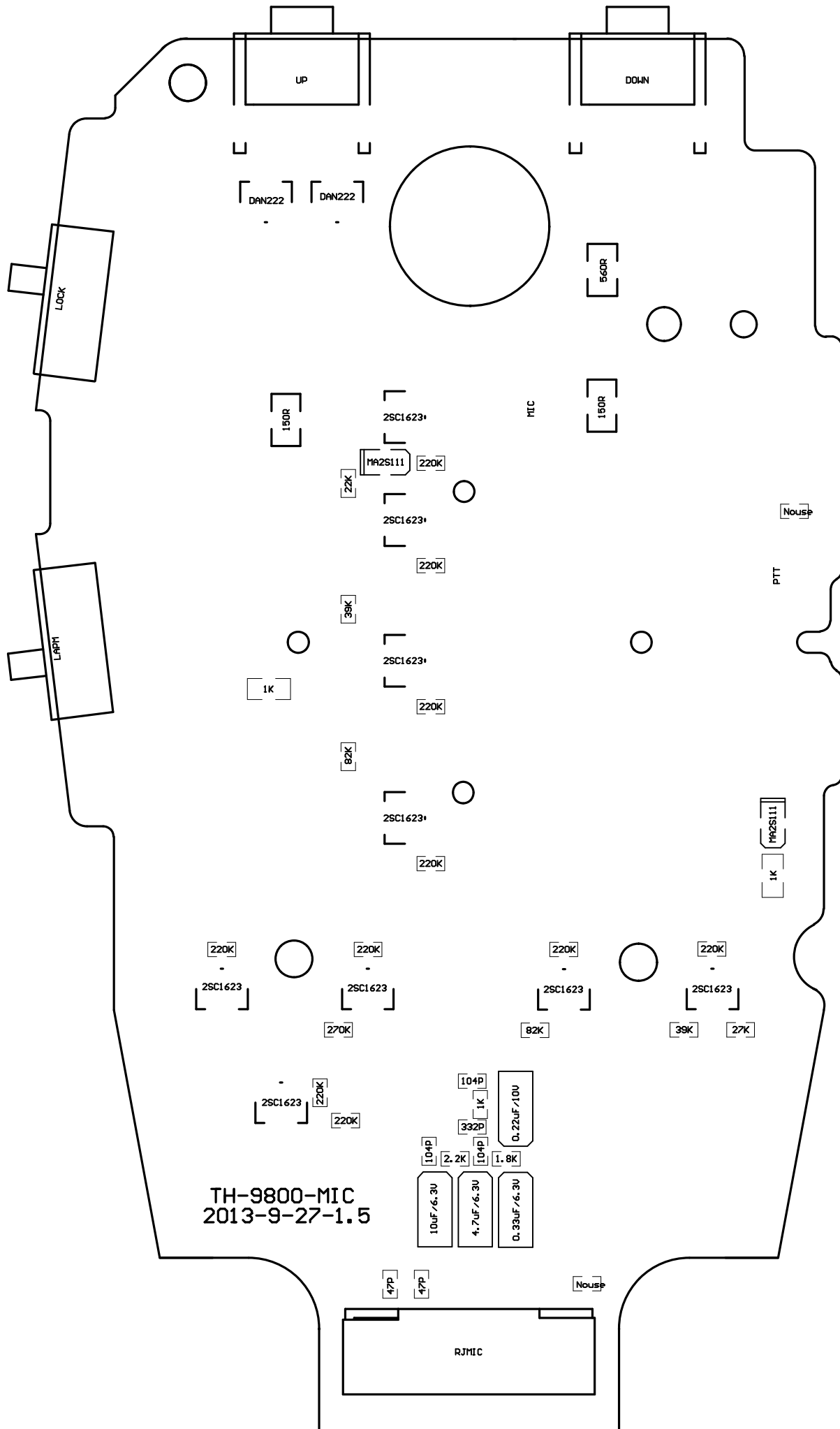
SH-B

SPEL STB

SPEL STB

TH-9800-LCD
2013-9-27-1.5





TH-9800-MIC
2013-9-27-1.5

